

now
available
in high
viscosity

riva light cure

LIGHT CURED RESIN REINFORCED GLASS IONOMER RESTORATIVE MATERIAL

LICHTHÄRTENDES, KUNSTSTOFF VERSTÄRKTES GLASIONOMER FÜLLUNGSMATERIAL

RESINA FOTOPOLIMERIZÁVEL REFORÇADA COM IONÔMERO DE VIDRO PARA RESTAURAÇÃO

IONOMERO DE VIDRIO DE RESTAURACION REFORZADO CON RESINA FOTOCURABLE

MATERIAU D'OBTURATION AU VERRE IONOMERE RENFORCE EN RESINE PHOTOPOLIMERISABLE

VETRO-IONOMERO PER RESTAURO, FOTOPOLIMERIZZABILE, RINFORZATO CON RESINA

LICHT UITHARDEND RESIN VERSTERKT GLASIONOMEER RESTAURATIE MATERIAAL

LYSHÆRDENDE RESINFORSTÆRKET GLASIONOMER FYLDNINGSMATERIALE

LYSHERDENDE RESINFORSTERKET GLASSIONOMER

VALOKOVETTEINEN LASI-IONOMEERIPOHJAINEN TÄYTEMATERIAALI

ΦΩΤΟΠΟΛΥΜΕΡΙΖΟΜΕΝΟ ΡΗΤΙΝΩΔΩΣ ΤΡΟΠΟΠΟΙΗΜΕΝΟ ΥΑΛΟΪΟΝΟΜΕΡΕΣ
ΥΛΙΚΟ ΑΠΟΚΑΤΑΣΤΑΣΗΣ

ŚWIATŁOUTWARDZALNY MATERIAŁ SZKŁO-JONOMEROWY MODYFIKOWANY ŻYWICĄ

MUGYANTÁVAL MEGEROSÍTETT ÜVERGIONOMER TÖMOANYAG

VALGUSKÕVASTUV, TUGEVDATUD KOOSTISEGA, KLAASIONOMEERNE TAASTUSMATERJAL

STEKLASTO IONOMERNI CEMENT S SVETLOBNIM STRJEVANJEM

GAISMĀ CIETĒJOŠS SVEKU STIPRINĀTS STIKLA JONOMĒRU RESTAURĀCIJAS MATERIĀLS

ŠVIESA KIETINAMA DERVA SUSTIPRINTA STIKLO JONOMERINĒ MEDŽIAGA RESTAURACIJOMS

SVĚTLEM TUHNOUCÍ GLASS IONOMERNÍ RESTAURAČNÍ MATERIÁL, S OBSAHEM ŽIVICE

SVETLOM TUHNÚCI GLASS IONOMERNÝ REŠTAURAČNÝ MATERIÁL, S OBSAHOM ŽIVICE

光重合型充填用レジン強化ガラスアイオ

光固化树脂增强型玻璃离子修复材料



SDI

the glass ionomer
restorative with
true esthetics

riva light cure HV

riva light cure



 ionglass™

THE DENTAL
ADVISOR
2011 Preferred Products
(Riva Light Cure)

Combination of GIC advantages and composite advantages

Riva Light Cure is a light-cured, resin-reinforced glass ionomer restorative cement. Glass ionomers release fluoride and chemically bond to the tooth structure whilst composites have excellent esthetics. Riva Light Cure is a combination of both with excellent esthetics, fluoride release and chemically bonds to the tooth structure.

Exceptional handling

Riva Light Cure HV can be manipulated immediately after mixing. It is a very sculptable material. It does not stick to instruments and resists any initial threading traditionally found with a light cured GIC. Riva Light Cure HV does not lift off after placement, particularly in the maxillary position.

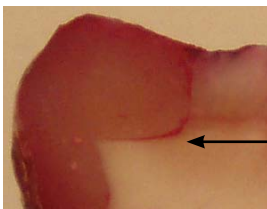
Great marginal adaptation

Riva Light Cure is the answer to long term microleakage prevention. Use it as a restorative or a base under permanent restorations. "...light-cured and self-cured glass ionomer bases were more effective in reducing microleakage in both the occlusal and proximal cavo surfaces than a flowable resin." (1)

Riva Light Cure



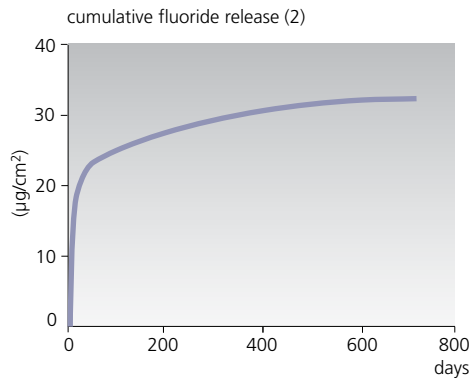
Flowable composite



Red dye indicates marginal leakage

Proprietary Bioactive ionglass™ technology

Riva Light Cure utilizes SDI's proprietary *ionglass*™ filler developed by our glass technologists. *ionglass*™ is a radiopaque, high ion releasing, bioactive glass used in SDI's range of glass ionomer products. Riva Light Cure releases fluoride to assist with remineralization of the natural dentition.



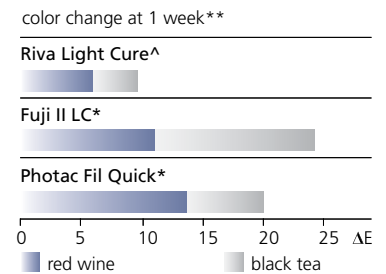
BPA free

Riva Light Cure does not contain any Bisphenol A (BPA) or its derivatives. Use this product with confidence and peace of mind.



Highest color stability

Riva Light Cure has excellent resistance to common stains such as black tea and red wine. Riva Light Cure absorbs about half as much color from these tannin-rich solutions.



Orange light safe tip

Riva Light Cure's capsule has a transparent orange nozzle. This protects the paste from curing under operating light in between placement.

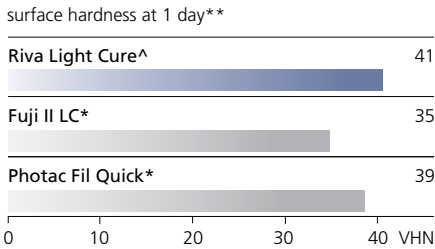
^Riva Light Cure HV (High Viscosity)

Simple procedure

Riva Light Cure is quick and simple to place. No bonding procedure is required. It chemically bonds to the tooth and provides ion exchange to demineralized dentition.

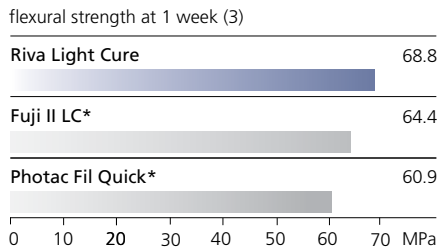
Long term wear resistance

The surface hardness of resin-reinforced glass ionomer cements means good long-term wear resistance. The greater the surface hardness, the greater the resistance to permanent surface indentation.



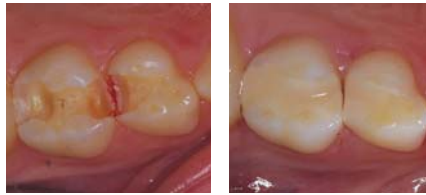
High flexural strength

High flexural strength ensures reduced cracking and failure in flexion. Riva Light Cure has excellent flexural strength.

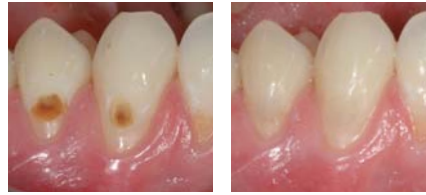


Fabulous esthetics

Riva Light Cure is available in 11 shades: A1, A2, A3, A3.5, A4, B2, B3, B4, C2, C4 and bleach. Riva Light Cure enables natural looking restorations with chameleon effects.



Photos courtesy of Dr Ara Nazarian, Michigan, USA.



Photos courtesy of Dr Geoff Knight, Victoria, Australia.

Indications

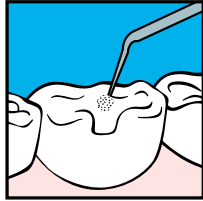
	Riva Light Cure	Riva Light Cure HV
Non stress bearing Class I and II restorations	✓	✓
Class III restorations	✓	✓
Cervical (Class V) restorations	✓	✓
- Cervical erosions	✓	✓
- Abfraction lesions	✓	✓
- Root surface restorations	✓	✓
Deciduous teeth restorations	✓	✓
Geriatric restorations	✓	✓
Core build ups	✓	✓
Pit and fissure sealing	✓	
Temporary fillings	✓	✓
Liner	✓	
Base / dentin replacement	✓	✓
Co-curing with composite (Sandwich technique)	✓	✓



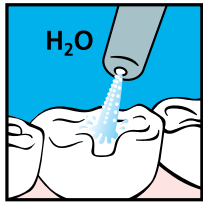
riva light cure/light cure HV

instructions:

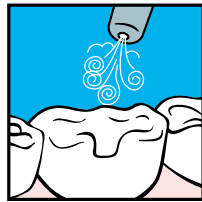
- 1** Isolate tooth, prepare cavity. Apply Riva Conditioner for 10 seconds or Super Etch 37% Phosphoric Acid for 5 seconds.



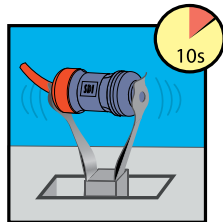
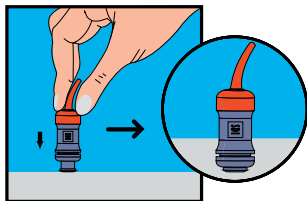
- 2** Wash thoroughly.



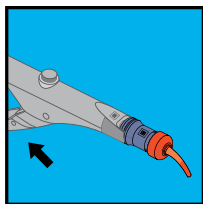
- 3** Remove excess water. Keep moist.



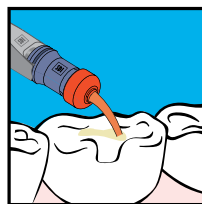
- 4** Activate the capsule and immediately mix in an amalgamator.



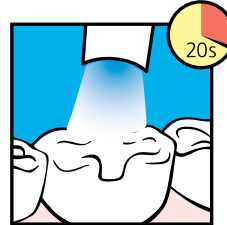
- 5** Immediately place into capsule applicator and click trigger until paste is seen through the nozzle.



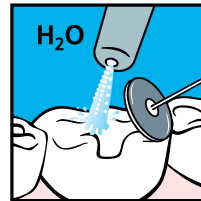
- 6** Extrude Riva Light Cure in increments of no more than 2mm into cavity and contour.



- 7** Light cure each increment for 20 seconds.



- 8** Final finishing under water spray can begin immediately after light curing.





Riva Light Cure Powder / Liquid Kits

7.2mL (8g) Riva Light Cure Liquid bottle
15g Riva Light Cure Powder jar
accessories

Reorder	
8700501	A1
8700502	A2
8700503	A3
8700504	A3.5
8700505	A4
8700507	B2
8700508	B3
8700510	B4
8700512	C2
8700514	C4
8700516	Bleach



Riva Light Cure Capsules

50 Riva Light Cure Capsules

Reorder	
8700001	A1
8700002	A2
8700003	A3
8700004	A3.5
8700005	A4
8700007	B2
8700008	B3
8700010	B4
8700012	C2
8700014	C4
8700016	Bleach

Riva Light Cure Capsule Assorted Kit

10 each of A1, A2, A3, A3.5 and B2 capsules
Reorder 8710000

Riva Light Cure HV Capsules

Reorder	
8730001	A1
8730002	A2
8730003	A3
8730004	A3.5
8730006	B1

2.7mL (3g) Riva Light Cure Liquid bottle

5g Riva Light Cure Powder jar
accessories

Reorder	
8700517	A2
8700518	A3
8700519	A3.5

Riva Light Cure Liquid Refill

7.2mL (8g) Riva Light Cure Liquid bottle
Reorder 8700900

Riva Light Cure Powder Refills

15g Riva Light Cure Powder Refill

Reorder	
8700101	A1
8700102	A2
8700103	A3
8700104	A3.5
8700105	A4
8700107	B2
8700108	B3
8700110	B4
8700112	C2
8700114	C4
8700116	Bleach



* Fuji II LC and Photac Fil Quick are not the registered trademarks of SDI Limited.

** Published and SDI Test Data.

(1) Duong T, Tran L, Perry R, Kugel G (2007). Microleakage testing in vitro using three different bases under composites. Special Issue of the Journal of Dental Research. Abstract #0366.

(2) McCabe JF, Al-Naimi OT. Fluoride release of three Riva GI Products Compared with that of a competitor product. University of Newcastle (UK); July 2007.

(3) Al-Naimi OT, Lopes MB, McCabe JF, Prentice LH. Flexural Strength of Resin-Modified Glass-Ionomer cements (RMGICs).



Made in Australia by SDI Limited
Bayswater, Victoria 3153
Australia 1 800 337 003
Austria 00800 022 55734
Brazil 0800 770 1735
France 00800 022 55 734
Germany 0800 100 5759
Ireland 01 886 9577
Italy 800 780625
New Zealand 0800 734 034
Spain 00800 022 55 734
United Kingdom 00800 022 55 734
USA & Canada 1 800 228 5166
www.sdi.com.au



Riva Conditioner

10mL bottle refill
Reorder 8620001



Riva Applicator 2
Reorder 5545013



Riva Applicator
Reorder 5545009



M870002 E

+0036M8700021+