

# riva self cure

now  
available  
in high  
viscosity

GLASS IONOMER RESTORATIVE MATERIAL

GLAS IONOMER-FÜLLUNGSMATERIAL

IONÔMERO DE VIDRO PARA RESTAURAÇÕES

VIDRIO IONOMERO MATERIAL RESTAURADOR

MATERIAU DE RESTAURATION AU VERRE IONOMERE

MATERIALE VETRO-IONOMERICO PER RESTAURO

GLASIONOMEER RESTAURATIEMATERIAAL

GLASIONOMER FYLDNINGSMATERIALE

GLASSIONOMER FYLLINGSMATERIALE

ΥΑΛΟΪΟΝΟΜΕΡΕΣ ΥΛΙΚΟ ΑΠΟΚΑΤΑΣΤΑΣΗΣ

修復用グラスアイオノマー

玻璃離子修復材



SDI

# riva self cure HV

## riva self cure

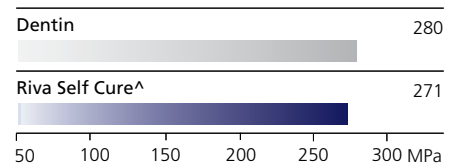
the tooth remineralizing  
restorative



### The strongest dentin replacement

When dentin is missing, use Riva Self Cure to replace it. It is the best dental material available today that virtually mimics dentin. No adhesive is required, and sensitivity is non-existent. Like dentin, Riva Self Cure has a very high compressive strength, ensuring it will withstand long term mastication forces.

compressive strength @ 7 days MPa\*\*



### Ideal for minimally invasive dentistry

Riva Self Cure is the ideal restorative material for use in minimally invasive dentistry (MID) as it is a bioactive material which prevents caries from occurring. Natural tooth structure is preserved, so large cavities and undercuts are not necessary.

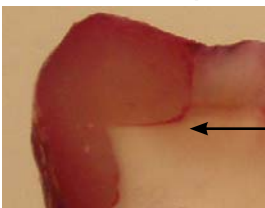
### Great marginal adaptation

Riva Self Cure is the answer to long term microleakage prevention. Use it as a restorative or a base under permanent restorations. "....self-cured glass ionomer bases were more effective in reducing microleakage in both the occlusal and proximal cavo surfaces than a flowable resin." <sup>(1)</sup>

### Riva Self Cure



### Flowable composite

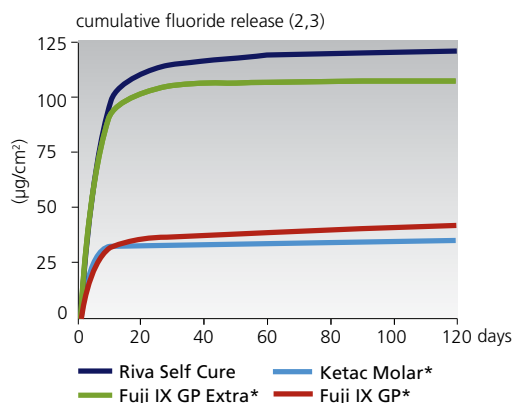


Red dye indicates marginal leakage

### Bioactive proprietary

#### ionglass technology

Riva Self Cure utilizes SDI's proprietary *ionglass*<sup>TM</sup> filler developed by our glass technologists. *ionglass*<sup>TM</sup> is a radiopaque, high ion releasing, bioactive glass used in SDI's range of glass ionomer products. Riva Self Cure releases substantially higher fluoride to assist with remineralization of the natural dentition.



### No shrinkage

Riva Self Cure does not contain resin eliminating the problem of volumetric shrinkage after curing. Sensitivity, resulting from microleakage associated with shrinkage does not occur.

^ Riva Self Cure HV (High Viscosity)



### BPA and HEMA Free

Riva Self Cure does not contain Bisphenol A (including its derivatives) or HEMA. Use this product on your patients with confidence and peace of mind.

### Choice of viscosities

Riva Self Cure easily extrudes into the cavity, but for an exceptional packable, high viscosity material, use Riva Self Cure HV. You have a choice.

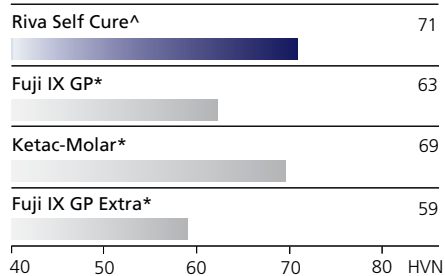
### Bulk fill to save time

Riva Self Cure can be bulk filled to minimize chair time.

## Surface hardness

The greater the surface hardness, the greater the resistance to abrasive wear. Riva Self Cure is a dynamic glass ionomer cement that can withstand high penetration of the surface.

surface hardness @ 1 week\*\*



## Setting times

elapsed time from start of mixing

Riva Self Cure capsules fast set



Riva Self Cure capsules regular set



Riva Self Cure HV capsules



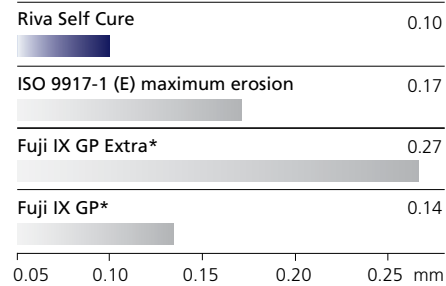
0 1 2 3 4 5 6 (minutes)

■ working time ■ initial setting time ■ finishing time

## Low acid erosion

Riva Self Cure has a very low acid erosion value. This improves the longevity of the restoration, resisting disintegration and wear caused by oral acidity. The ISO Standard dictates that a material cannot have acid erosion of more than 0.17mm.

depth of acid erosion after 24 hours\*\*



## Indications

- Non stress bearing Class I and II restorations
- Deciduous teeth restorations
- Geriatric restorations
- Intermediate restorative and base material for Class I and II cavities using the sandwich technique
- Cervical (Class V) restorations
- Core build ups
- Temporary fillings
- Restorative in the field using the ART technique
- Dentin replacement



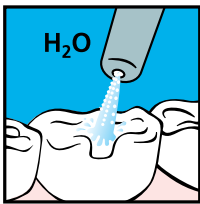
# riva self cure/self cure HV

## instructions:

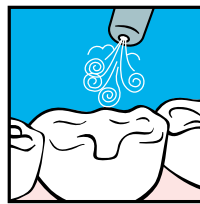
- 1** Isolate tooth, prepare cavity. Apply Riva Conditioner for 10 seconds or Super Etch 37% Phosphoric Acid for 5 seconds.



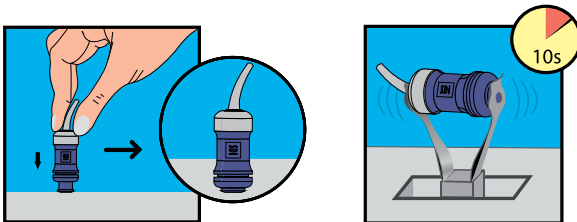
- 2** Wash thoroughly.



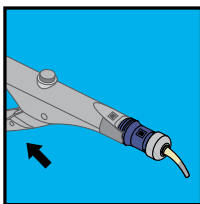
- 3** Remove excess water. Keep moist.



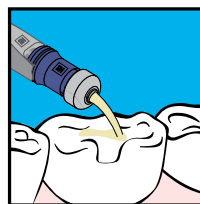
- 4** Activate the capsule and immediately mix in an amalgamator.



- 5** **Immediately** place into capsule applicator and click trigger until paste is seen through the nozzle.



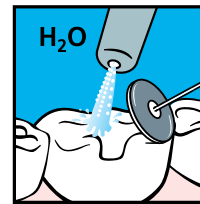
- 6** Extrude Riva Self Cure into cavity and contour.



- 7** Apply Riva Coat and light cure.



- 8** Commence final finishing under water spray.



**Finishing time from start of mixing:**

Riva Self Cure: 6'00"

Riva Self Cure Fast Set: 4'30"

Riva Self Cure HV: 5'00"

- 9** Apply Riva Coat and light cure.





### Riva Self Cure Capsules Regular Set

50 Riva Self Cure Capsules

Reorder

8600001	A1
8600002	A2
8600003	A3
8600004	A3.5
8600005	A4
8600007	B2
8600008	B3

### Riva Self Cure Capsules Fast Set

50 Riva Self Cure Capsules

Reorder

8605001	A1
8605002	A2
8605003	A3
8605004	A3.5
8605005	A4
8605007	B2
8605008	B3

### Riva Self Cure Capsule Assorted Kits

10 each of A1, A2, A3, A3.5 and B2 capsules

Reorder

8610000	Regular Set
8620000	Fast Set

### Riva Self Cure HV Capsules

50 Riva Self Cure HV Capsules

Reorder

8630001	A1
8630002	A2
8630003	A3
8630004	A3.5



### Riva Coat

5mL bottle refill  
Reorder 8610001

### Riva Conditioner

10mL bottle refill  
Reorder 8620001

### Riva Self Cure Powder / Liquid Kits

6.9mL (8g) Riva Self Cure Liquid bottle

15g Riva Self Cure Powder jar

accessories

Reorder

8610501	A1
8610502	A2
8610503	A3
8610504	A3.5
8610505	A4
8610507	B2
8610508	B3

5.2mL (6g) Riva Self Cure Liquid bottle

10g Riva Self Cure Powder jar

accessories

Reorder

8610612	A2
8610613	A3
8610614	A3.5

2.6mL (3g) Riva Self Cure Liquid bottle

5g Riva Self Cure Powder jar

accessories

Reorder

8600602	A2
8600603	A3
8600604	A3.5

### Riva Self Cure Liquid Refill

6.9mL (8g) bottle refill

Reorder 8610900

### Riva Self Cure Powder Refills

15g Riva Self Cure Powder Refill

Reorder

8610101	A1
8610102	A2
8610103	A3
8610104	A3.5
8610105	A4
8610107	B2
8610108	B3



**Riva Applicator 2**  
Reorder 5545013

**Riva Applicator**  
Reorder 5545009



(1) Duong T, Tran L, Perry R, Kugel G (2007). Microleakage testing in vitro using three different bases under composites. Special Issue of the Journal of Dental Research. Abstract #0366.

(2) McCabe JF, Al-Naimi OT. Fluoride Release into Water for the Riva GIC Products compared with Competitor Products. University of Newcastle (UK). February 2005

(3) McCabe JF, Al-Naimi OT. Fluoride Release of Two SDI Products with Two Competitor Product. University of Newcastle (UK). December 2007

\* Fuji IX GP Extra, Fuji IX GP and Ketac Molar are not the registered trademarks of SDI Limited.

\*\* Published and SDI Test Data.



Made in Australia by SDI Limited

Bayswater, Victoria 3153

Australia 1 800 337 003

Austria 00800 022 55734

Brazil 0800 770 1735

France 00800 022 55 734

Germany 0800 100 5759

Ireland 01 886 9577

Italy 800 780625

New Zealand 0800 734 034

Spain 00800 022 55 734

United Kingdom 00800 022 55 734

USA & Canada 1 800 228 5166

www.sdi.com.au



M860002 E

