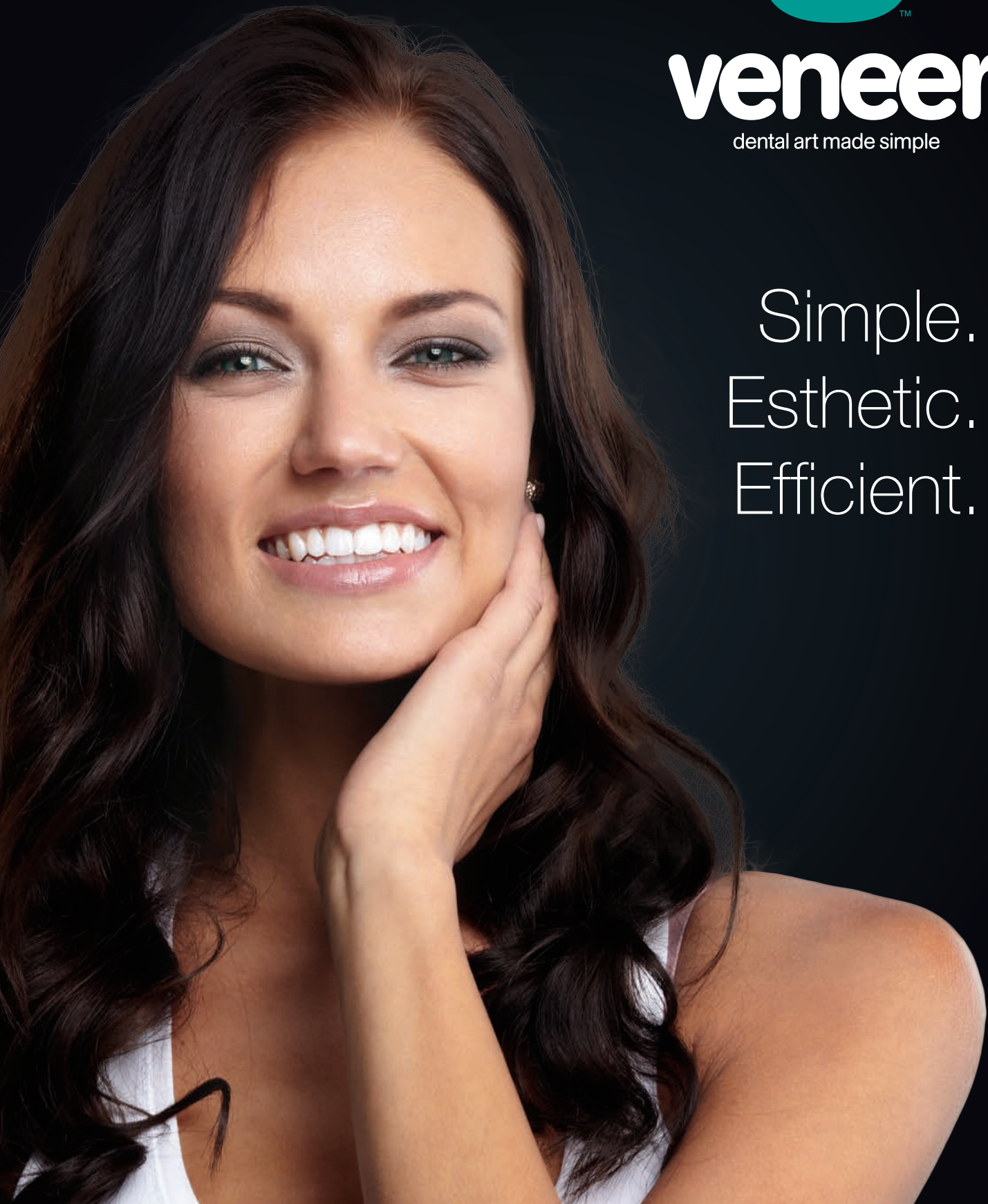




**veneer**<sup>TM</sup>  
dental art made simple

Simple.  
Esthetic.  
Efficient.



## Beautiful Direct Composite Veneers Made Simple!



Australian-based dentist Dr. Sigal Jacobson created the ingenious Uveneer™ direct composite template kit when she found that traditional freehand direct composite veneers were artistically challenging, time-consuming, unpredictable, and not always cost-effective. Passionate about conservative cosmetic dentistry, Dr. Jacobson knew there was a better, less invasive way to create long-lasting, esthetic composite veneers. She spent years working with engineers to create the perfect design and process for her anterior facial matrix template system. Uveneer was born.



### Uveneer Kit

16x Medium upper and lower arch templates  
16x Large upper and lower arch templates

Medium and large templates provide 2 central incisors, 2 lateral incisors, 2 canines, and 2 premolar templates for both the upper and lower arches.

**“Terrific tool to quickly and easily create beautiful anterior restorations.”**

-Dr. Gary M. Radz, DDS

**“The simplicity of Uveneer is absolutely remarkable. Why didn’t I think of this?”**

-Dr. John C. Comisi, DDS, MAGD

## What is Uveneer™?

Uveneer is a unique, minimally invasive template system that creates beautiful direct composite veneers with predictable shape and symmetry—all in one visit. Each template mimics natural dentition and is designed to create high-quality natural-looking anterior restorations. Uveneer uses innovative technologies that help the dentist achieve a refined, anatomically correct, high-gloss restoration in a fraction of the time than if done freehand. Results are both reproducible and predictable.

Uveneer can also be used for cosmetic mock-ups and shade selection as well as temporaries during porcelain veneer creation.



Young woman embarrassed to show her teeth. An implant crown on tooth #10 didn't match surrounding dentition. Treatment time was 45 minutes to restore teeth 7, 8, and 9. Minimal preparation needed. Patient is happy and satisfied with results. – Dr. Sigal Jacobson



Patient wanted something quick, conservative, affordable. Treatment time was 1.5 hours, teeth 22-27, Vit-I-escence® PN, no prep. Tissues still a bit irritated as this photo was taken immediately post op after removing the retraction cords. Patient extremely satisfied. – Dr. Hal Stewart

**“In a single day I was able to do 11 mock-up veneers that were not part of the original schedule, resulting in several new cases being accepted. I wouldn't want to work without them now.”**

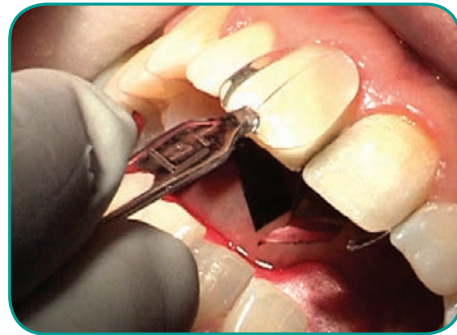
-Dr. Chad Wagener, DDS



## Uveneer™ Templates

Each reusable, autoclavable template is designed to mimic ideal tooth anatomy according to the rules of smile design and the “golden proportion” by incorporating ideal height to width ratio, contour, embrasure, and center midline.

Due to the precise anatomical facial tooth contour of the templates, the final result will yield different thicknesses of composite (less toward the incisal third and gingival areas and greater in the middle of the facial surface). Because this varied thickness creates different effects and values, only one shade of composite is needed to achieve a natural gradient effect. However, multiple shades of composite can still be used depending on which technique is preferred.



The system includes a complete set of translucent templates that allows easy and fast reproduction of anterior tooth anatomy in the form of a composite veneer. Each template is made from medical grade plastic with a nonstick coating that does not adhere to composite and is both reusable and autoclavable.

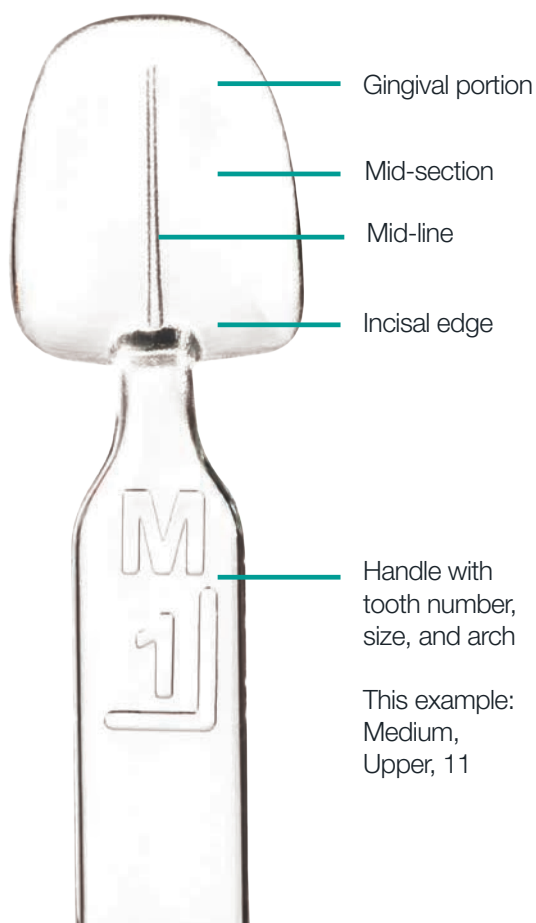
**“Uveneer makes the practice of the anterior esthetic dentistry easier, faster, and better.”**

-Dr. George Freedman, DDS

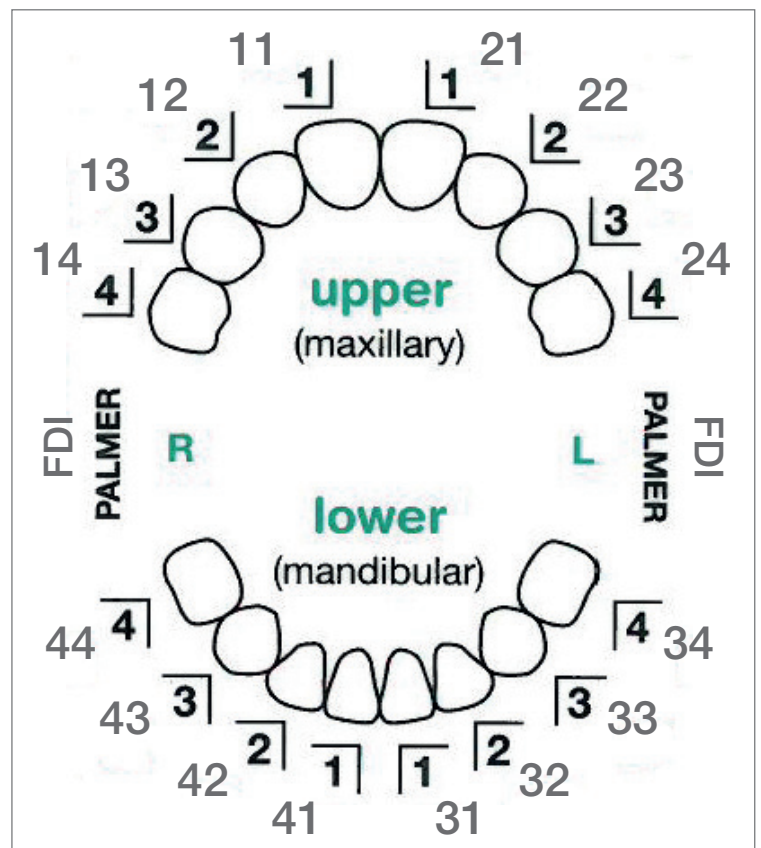


# Uveneer™ Templates

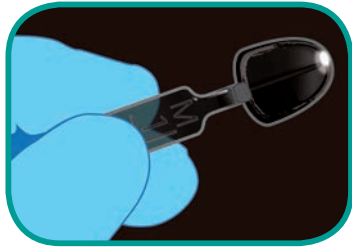
- A unique, minimally invasive template system with predictable shape and symmetry.
- Quick and reliable, high-quality, natural-looking composite restorations in one visit.
- Prevents the oxygen inhibition layer during curing, resulting in a hard, glossy surface.
- Autoclavable and reusable, making it a cost-effective choice.
- Works with any preferred composite.
- Allows light to pass through the template to the composite for effective curing.
- Releases easily from cured composite resin.
- Requires minimal adjusting or polishing, saving time.
- Facilitates application on individual or multiple teeth.
- Can also be used for cosmetic mock-ups, shade selection, and temporaries during porcelain veneer creation.



## Dental Numbering System



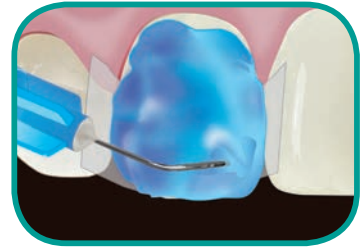
# Uveneer™ Technique Guide



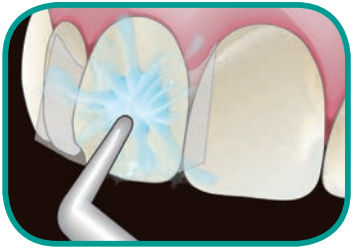
1. Choose preferred composite shade(s). Select the template that corresponds with the tooth being restored. See handle of template for corresponding tooth number, size, and arch.



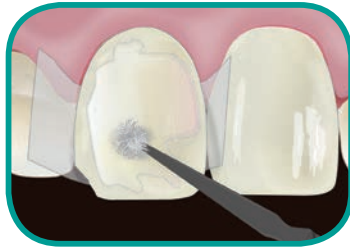
2. Remove all caries if needed and minimally prepare the tooth.



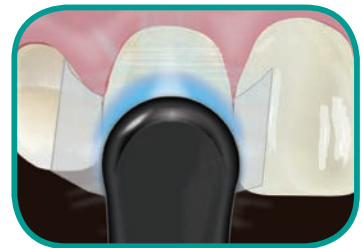
3. Place interproximal separating matrices and apply Ultra-Etch®, Peak® SE Primer, or preferred etch.



4. Rinse etch according to manufacturer's instructions. Do not rinse if using Peak SE Primer.



5. Apply Peak® Universal Bond or preferred adhesive to tooth surface.



6. Light cure with VALO® 1 x 10 seconds on Standard Power. If using other curing light, cure according to manufacturer instructions.



7. Apply preferred composite directly onto tooth.

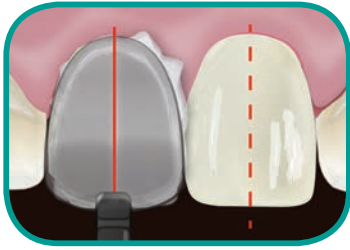


8. Do not light cure composite.



9. Select chosen Uveneer template. Template should ideally cover the entire facial surface of the tooth. If not, additional composite may be used at the periphery to compensate.

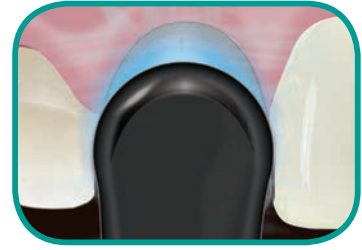
# Uveneer™ Technique Guide



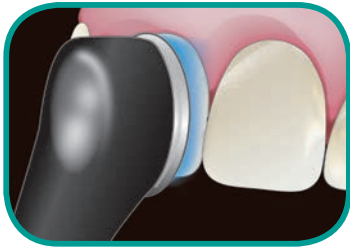
10. Align centerline of template parallel to the midline of the face and perpendicular to the incisal plane. Using thumb, press the concave side of the selected template onto the tooth. Press firmly to remove any trapped air.



11. Remove any excess composite from the periphery.



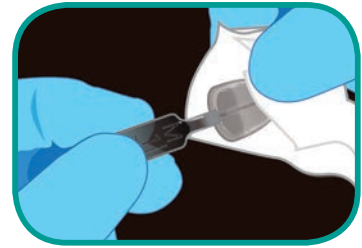
12. Using VALO®, cure composite through template. For every 2mm layer, cure 1–2 x 10 seconds on Standard Power, 1–2 x 4 seconds on High Power, or 1–2 x 3 seconds on Xtra Power. If using other curing light, cure according to manufacturer instructions.



13. Remove the Uveneer template by gently lifting the handle. Using VALO, final cure directly onto composite. To ensure composite is cured thoroughly, for every 2mm layer, cure 3 x 10 seconds on Standard Power, 3 x 4 seconds on High Power, or 3 x 3 seconds on Xtra Power. If using other curing light, cure according to manufacturer instructions.



14. Avoiding the glossy facial surface, trim excess composite from periphery with a fine flameshaped bur in Ultradent® Composite Finishing Bur kit. Use Jiffy® Composite Polishers, Brushes, Diamond Strips, or Proximal Saws for minimal finishing and adjusting if desired.



15. Immediately after use, thoroughly wipe template with alcohol pad, dry, bag, and autoclave according to Uveneer IFU. Do not leave any composite residue on the template in order to maintain translucency and shine.

## Temporary Veneers:

Follow the same steps for direct composite veneers but spot etch with Ultra-Etch® and adhere with ClearTemp® LC or preferred etch and adhesive.

## Mock Ups:

Follow the same steps for direct composite veneers but do not prep, bond, or etch.

Scan to see a short demo video!





UPP 450-EU 01-2016