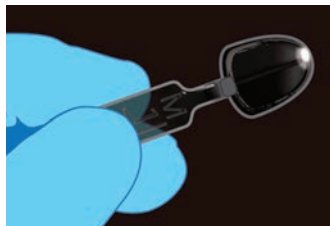




# Uveneer™ Technique Guide



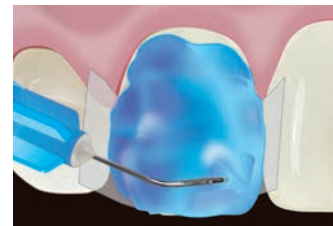
Uveneer is a unique, minimally invasive template system that creates beautiful direct composite veneers with predictable shape and symmetry – all in one visit.



1. Choose preferred composite shade(s). Select the template that corresponds with the tooth being restored. See handle of template for corresponding tooth number, size, and arch.



2. Remove all caries if needed and minimally prepare the tooth.



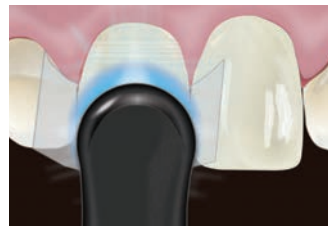
3. Place interproximal separating matrices and apply Ultra-Etch®, Peak® SE Primer, or preferred etch.



4. Rinse etch according to manufacturer's instructions. Do not rinse if using Peak SE Primer.



5. Apply Peak® Universal Bond or preferred adhesive to tooth surface.



6. Light cure with VALO® 1 x 10 seconds on Standard Power. If using other curing light, cure according to manufacturer instructions.



7. Apply preferred composite directly onto tooth.

[ULTRADENT.COM/EU](http://ULTRADENT.COM/EU)

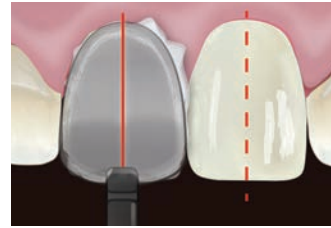
© 2016 Ultradent Products, Inc. All Rights Reserved.



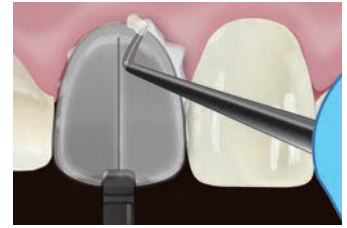
8. Do not light cure composite.



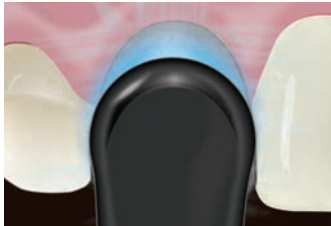
9. Select chosen Uvener template. Template should ideally cover the entire facial surface of the tooth. If not, additional composite may be used at the periphery to compensate.



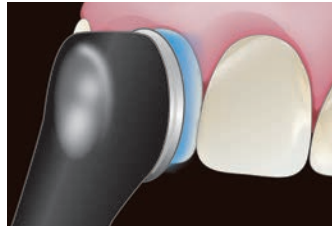
10. Align centerline of template parallel to the midline of the face and perpendicular to the incisal plane. Using thumb, press the concave side of the selected template onto the tooth. Press firmly to remove any trapped air.



11. Remove any excess composite from the periphery.



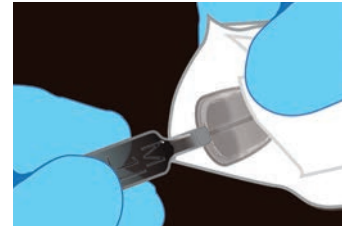
12. Using VALO® LED Curing Light cure composite through template. For every 2 mm layer, cure 1–2 x 10 seconds on Standard Power, 1–2 x 4 seconds on High Power, or 1–2 x 3 seconds on Xtra Power. If using other curing light, cure according to manufacturer instructions.



13. Remove the Uvener template by gently lifting with the handle. Using VALO®, final cure directly onto composite. To ensure composite is cured thoroughly, for every 2 mm layer, cure 3 x 10 seconds on Standard Power, 3 x 4 seconds on High Power, or 3 x 3 seconds on Xtra Power. If using other curing light, cure according to manufacturer instructions.



14. Avoiding the glossy facial surface, trim excess composite from periphery with a fine flameshaped bur in Ultradent® Composite Finishing Bur Kit. Use Jiffy® Composite Polishers, Brushes, Diamond Strips, or Proximal Saws for minimal finishing and adjusting if desired.



15. Immediately after use, thoroughly wipe template with alcohol pad, dry, bag, and autoclave according to Uvener IFU. Do not leave any composite residue on the template in order to maintain translucency and shine.

**Temporary Veneers:** Follow the same steps for direct composite veneers but spot etch with Ultra-Etch® and adhere with ClearTemp® LC or preferred etch and adhesive.

**Mock Ups:** Follow the same steps for direct composite veneers but do not prep, bond, or etch.

Visit [www.ultradent.com/eu](http://www.ultradent.com/eu) for more information including the technique video.

UPP 452-EU 01-2016

**ULTRADENT**  
PRODUCTS, INC.