

Restorative

By **DIRECTA**

Directa's products are developed, tested and evaluated by our elected team of highly-qualified and renowned Swedish and international dentists with the aim of making life easier for the dentist in the daily clinical work.

Design By Dentists™

Directa's products are developed, tested and evaluated by our elected team of highly-qualified and renowned Swedish and international dentists with the aim of making life easier for the dentist in the daily clinical work.

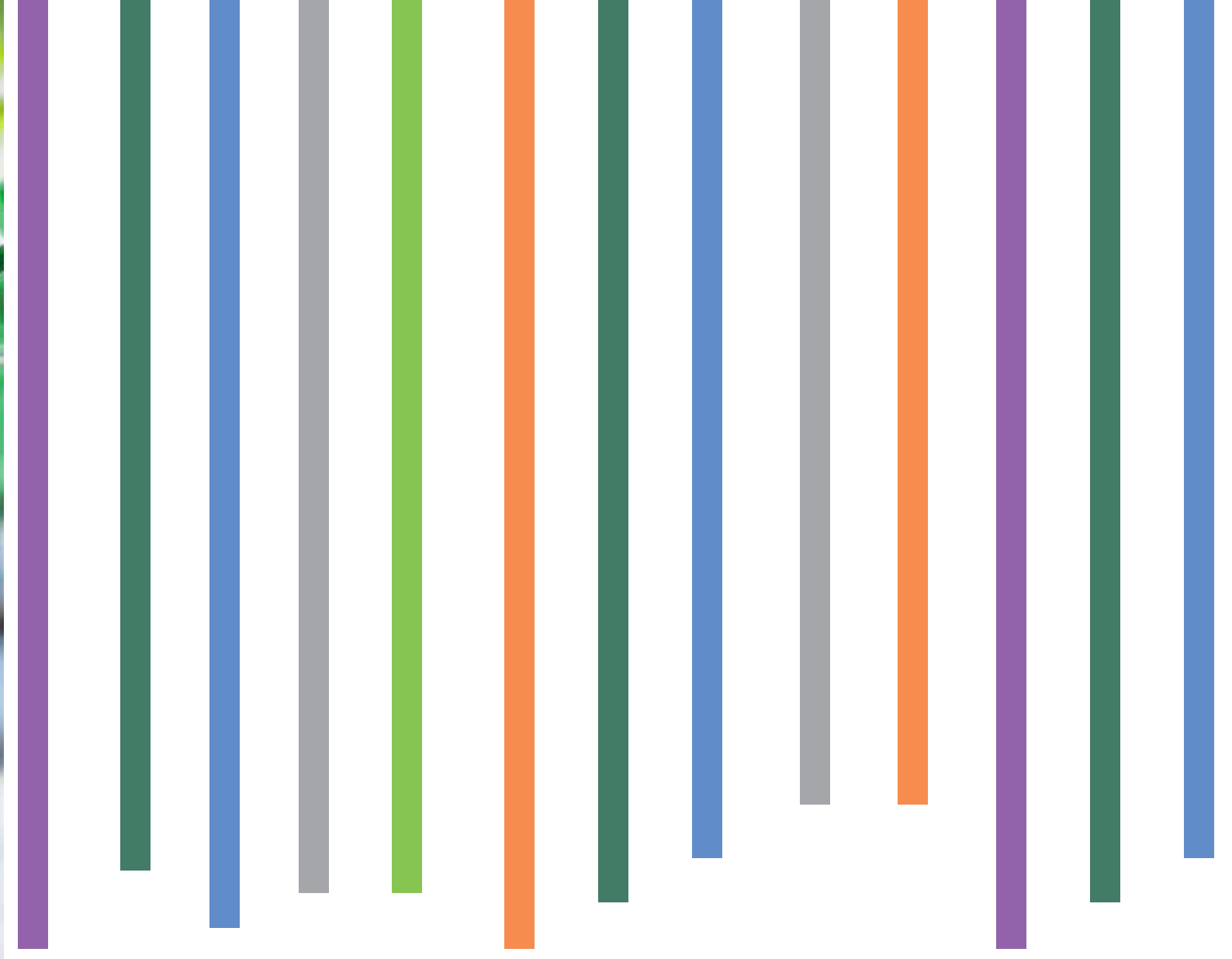
DIRECTA
directadental.com



DIRECTA AB
P.O. Box 723,
194 27 Upplands Väsby, SWEDEN
+46 8 506 505 75

DIRECTA Inc
54 Danbury Road Suite 348
Ridgefield, CT 06877, USA
203.439.9828

DIRECTA
directadental.com



FenderWedge® & FenderMate® Intro-Kit

Prod No	Product Description	Quantity
602679	FenderWedge® & FenderMate® Intro-Kit FenderWedge X-small x 3pcs Small x 3pcs Medium x 1pc Large x 1pc and FenderMate Left Narrow x 8pcs Left Regular x 2pcs Right Narrow x 8 pcs Right Regular x 2pcs	8 & 20 pcs

**Dental Fenders,
Innovations for safe preparations and predictable restorations.**

In 2006 FenderWedge was the first of five Fender Products created by Directa's group of dental consultants. Directa is committed to developing aids for improving dentistry.

FenderWedge shields adjacent teeth during preparation. 70% of unshielded teeth are damaged during preparation*, hence FenderWedge is strongly recommended by eminent lecturers the world over. FenderWedge - the dental "safety belt".

FenderWedge paved the way for FenderMate, a one-piece matrix wedge that allows a quick and efficient restoration with natural contact and sealed cervical margin. Retention rings or matrix holders are not needed.

FenderMate was designed for small and medium-sized cavities.

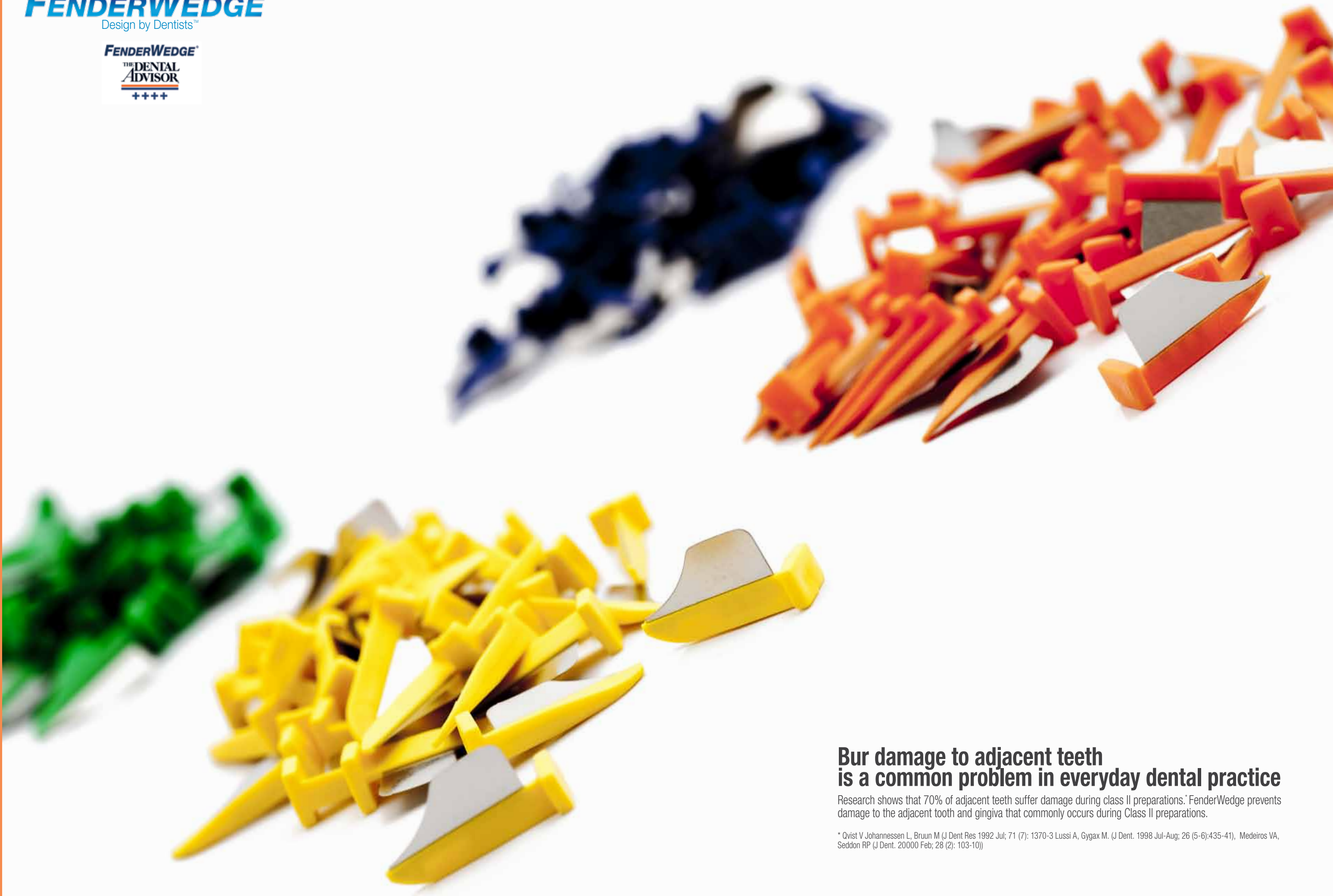
Our next product FenderWedge Prep was introduced in 2011 to shield larger preparations such as crowns, veneers and inlays.

With children in mind, FenderMate Prime is the first and only combined shield and matrix development. It is specially designed to offer a gentle, comfortable, quick technique for preparing and restoring primary teeth.

FenderMate Temp is the new all-in-one solution for safe and easy preparation and filling of temporary proximal restorations.

FENDERWEDGE®
Design by Dentists™

FENDERWEDGE®
THE DENTAL
ADVISOR
++++



Bur damage to adjacent teeth is a common problem in everyday dental practice

Research shows that 70% of adjacent teeth suffer damage during class II preparations.* FenderWedge prevents damage to the adjacent tooth and gingiva that commonly occurs during Class II preparations.

* Qvist V, Johannessen L, Bruun M (J Dent Res 1992 Jul; 71 (7): 1370-3 Lussi A, Gyax M. (J Dent. 1998 Jul-Aug; 26 (5-6):435-41), Medeiros VA, Seddon RP (J Dent. 2000 Feb; 28 (2): 103-10))

4 reasons to use FenderWedge®

#1

Confident Preparations

High quality preparations made faster without tissue damage.



#3

Pre-Separation

Facilitates the easy placement of matrix and the establishment of a good contact.

#2

Protects adjacent tooth

The protective shield and wedge helps to avoid damage to adjacent tooth.

#4

Protects gingiva

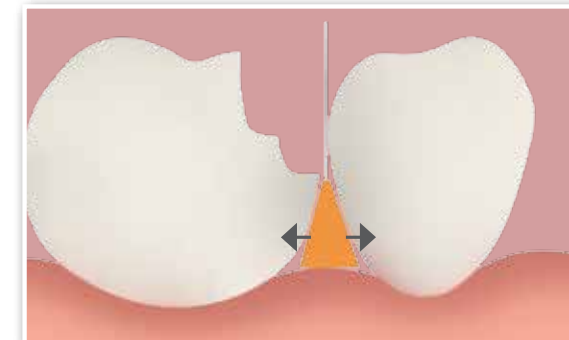
Protective shield and wedge helps to avoid bleeding and damage to gingival tissue.

Prepare precise cavities quicker and safely without damage to adjacent tissue.

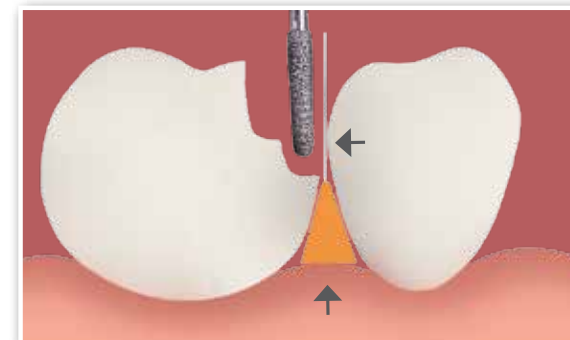
FENDERWEDGE®
Design by Dentists™



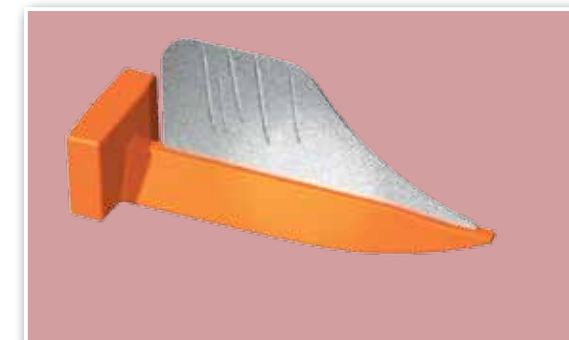
1. Inserts buccally or lingually and stays in place during preparation.



2. Provides optimal and lasting separation for insertion of a matrix.



3. Protects adjacent tooth and papilla.



4. After use FenderWedge clearly shows traces of bur contact.

Protects tooth and gingiva during class II preparations

Bur damage to adjacent teeth is a common problem in everyday dental practice. Research shows that 70% of adjacent teeth suffer damage during class II preparations.*

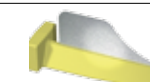
FenderWedge prevents damage to the adjacent tooth and gingiva that commonly occurs during Class II preparations. FenderWedge is a combination of a steel plate and a plastic wedge. It facilitates easy application of a matrix. To avoid aspiration it is recommended to secure FenderWedge with a waxed dental floss.

* Qvist V, Johannessen L, Bruun M (J Dent Res 1992 Jul; 71 (7): 1370-3) Lussi A, Gygax M. (J Dent. 1998 Jul-Aug; 26 (5-6):435-41), Medeiros VA, Seddon RP (J Dent. 20000 Feb; 28 (2): 103-10)

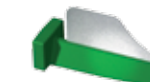
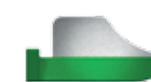
FenderWedge®

Prod No	Product Description	Quantity
602750	Assortment	4x36 pcs
602751	Small, Orange	36 pcs
602752	Medium, Green	36 pcs
602753	Large, Yellow	36 pcs
602754	X-small, Purple	36 pcs
602800	FenderWedge Value Pack, Orange	100 pcs
602801	FenderWedge Value Pack, Green	100 pcs
602802	FenderWedge Value Pack, Yellow	100 pcs
602803	FenderWedge Value Pack, Purple	100 pcs

Large



Medium



Small



x-small



Food approved plastic (Polypropene) and colour. Stainless Steel. t= 0,08 mm
FenderMate is a registered trademark owned by Directa AB. Registered Design and Patent pending.



**Improve the quality of preparations
and save time thanks to increased vision and safety**

FenderWedge Prep is a plastic wedge with an inbuilt steel plate specially designed for larger preparations such as crowns, veneers and inlays.

4 reasons to use FenderWedge® Prep

#1 Protect adjacent tooth

The protective shield and wedge helps to prevent accidental damage to adjacent tooth.



#2 Confident crown and veneer preparations

High quality preparations made faster without damage to papilla and adjacent tooth.

#4 Optimal space and vision

The protective shield is bendable for optimal work space and vision.

#3 Boat-shaped wedge

Enables to insert into tight interproximal spaces. Compresses the gingiva to avoid bleeding and provides a sub-gingival preparation edge.

Confident crown and facing preparations without damage to adjacent teeth and papilla.

FENDERWEDGE PREP®
Design by Dentists™



1. Insert FenderWedge Prep lingually or buccally.



2. Confidently prepare in the knowledge that the adjacent tooth and gingiva are safely protected.



3. FenderWedge Prep can be used in all proximal spaces.



4. The steel plate is perforated allowing it to be bent before insertion providing better space and vision.

Protects tooth and papilla during preparations of crowns and veneers

FenderWedge Prep is a plastic wedge with an inbuilt steel plate specially designed for larger preparations such as crowns, veneers and inlays. FenderWedge Prep improves the quality of preparations and saves time thanks to increased vision and safety.

FenderWedge Prep has a thin, "boat-shaped" tip which enables it to be inserted into tight proximal spaces at the same time as it compresses the gingiva without damage, avoiding bleeding and delay of impression taking.

The steel plate is perforated thus allowing it to be bent before insertion to lean against the adjacent tooth, providing better access and vision.

FenderWedge® Prep

Prod No	Product Description	Quantity
602749	FenderWedge Prep acc. Dr. Massironi, Grey	36 pcs
602811	FenderWedge Prep acc. Dr. Massironi, Grey Value Pack	100 pcs

Regular



Food approved plastic (Polypropylene) and colour. Stainless Steel. t= 0,08 mm
FenderWedge Prep is a registered trademark owned by Directa AB. Registered Design and Patent pending.



Sectional matrix for Class II composite restorations

FenderMate is a pre-curved, one-piece sectional matrix and wedge that provides for quick, safe and predictable composite restorations, with a tight contact and cervical sealing. FenderMate is designed to be inserted either buccally or lingually. The matrix reaches from the base of the wedge to just a few millimeters above the occlusal surface. The side of the wedge facing the adjacent tooth has an angled wing. During insertion, the wing presses the matrix firmly against the preparation, giving a tight seal at the cervical margin. To form the contact point the matrix has a pre-contoured indentation, which mimics natural contours.

4 reasons to use FenderMate®

#1

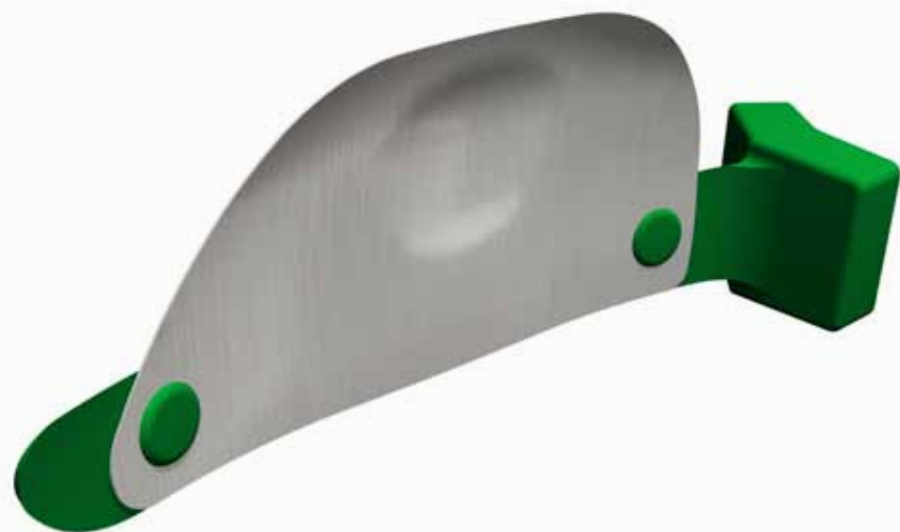
Predictable contact and anatomic shape

The pre-shaped contact adapts to the proximal surface and forms the optimal contact and anatomic shape.

#2

One piece design

Matrix and wedge combined for easier and safer placement.



#3

No cervical overhang

The wing design exerts pressure for maintained separation and cervical margin adaptation.

#4

Designed for minimally invasive dentistry

Can be inserted interproximally with minimal preparation.

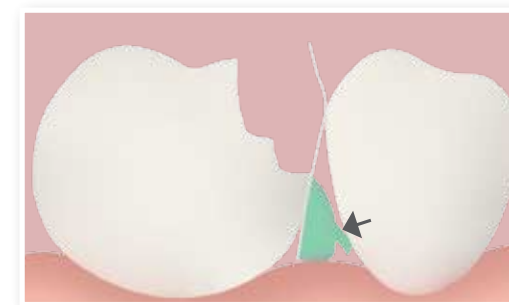
Tight cervical margin with a natural contact.

One piece matrix design.

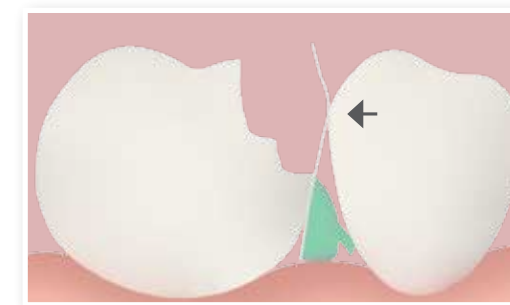
FENDERMATE®
Design by Dentists™



1. Insert the wedge under the preparation with a downward and curved movement.



2. Flexible wing exerts pressure for optimal separation and cervical seal, avoiding overhang.



3. The pre-contoured FenderMate adjusts to the space and forms the optimal contact point.



4. Ready in seconds for a perfect restoration.

Cervical Overhangs A Mistake Easy To Miss

A weak cervical junction under the contact point can cause an overhang. The control with a probe or floss may give the impression of a correct filling.

The access material is not bonded to the tooth structure. After a period of time the occlusal pressure during chewing causes a fracture of the access material. The fractured surface creates a trap for food impaction and plaque retention causing caries and gingivitis. Sectional matrix systems which consists of a matrix, wedge and ring, gives a risk of causing leakage due to lower pressure of the wedge against the matrix when the ring is applied to separate the teeth.

FenderMate®

Prod No	Product Description	Quantity
602770	Assortment	4x18 pcs
602771	Green, Left Regular	18 pcs
602772	Light Green, Left Narrow	18 pcs
602773	Blue, Right Regular	18 pcs
602774	Light Blue, Right Narrow	18 pcs
602804	FenderMate Value Pack, Green, Left Regular	100 pcs
602805	FenderMate Value Pack, Light Green, Left Narrow	100 pcs
602806	FenderMate Value Pack, Blue, Right Regular	100 pcs
602807	FenderMate Value Pack, Light Blue, Right Narrow	100 pcs

Left Regular



Left Narrow



Right Regular



Right Narrow



Food approved plastic (Polypropene) and colour. Stainless Steel. t= 0,05 mm
FenderMate is a registered trademark owned by Directa AB. Registered Design and Patent pending.



The new all-in-one solution

For safe and easy preparation and filling of temporary proximal restorations. After preparation FenderMate Temp can easily curved to follow the tooth anatomy, facilitating precise fillings and minimizing the risk of problems caused by overhang on temporary restorations.

4 reasons to use FenderMate® Temp

#1

Designed for temporary fillings

Minimizes overhang and bleeding.

#2

Bendable

Curves around the tooth to create an acceptable anatomical shape and minimizes finishing.



#3

Easy placement

Facilitates a high quality, fast and secure treatment.

#4

One piece design

Designed to be used for protection and matrix for temporary fillings of any material.

The new all-in-one solution

for safe and easy preparation and filling of temporary proximal restorations.

FENDERMATE^{TEMP}
Design by Dentists™



1. Insert FenderMate Temp lingually or buccally. Prepare the cavity while protecting adjacent tooth and gingiva.



2. Curve around the tooth to create an acceptable anatomical shape and minimized finishing.



3. Fill the cavity with any type of temporary filling material.



4. High quality temporary filling completed fast and easy.

Protection and matrix for temporary restorations

FenderMate Temp is the new all-in-one solution for safe and easy preparation and filling of temporary proximal restorations.

FenderMate Temp is a stainless steel matrix on a plastic wedge that is easily placed into the proximal area before preparation. It protects the adjacent tooth from unnecessary damage and minimizes contamination of blood from the gingival pocket.

After preparation FenderMate Temp can easily be curved to follow the tooth anatomy, facilitating precise fillings and minimizing the risk of problems caused by overhang on temporary restorations.

When rubber dam is not used, it is suggested to secure FenderMate Temp with waxed floss.

FenderMate® Temp

Prod No	Product Description	Quantity
602786	FenderMate Temp, Lilac	36 pcs
602811	FenderMate Temp, Lilac Value Pack	100 pcs

Regular

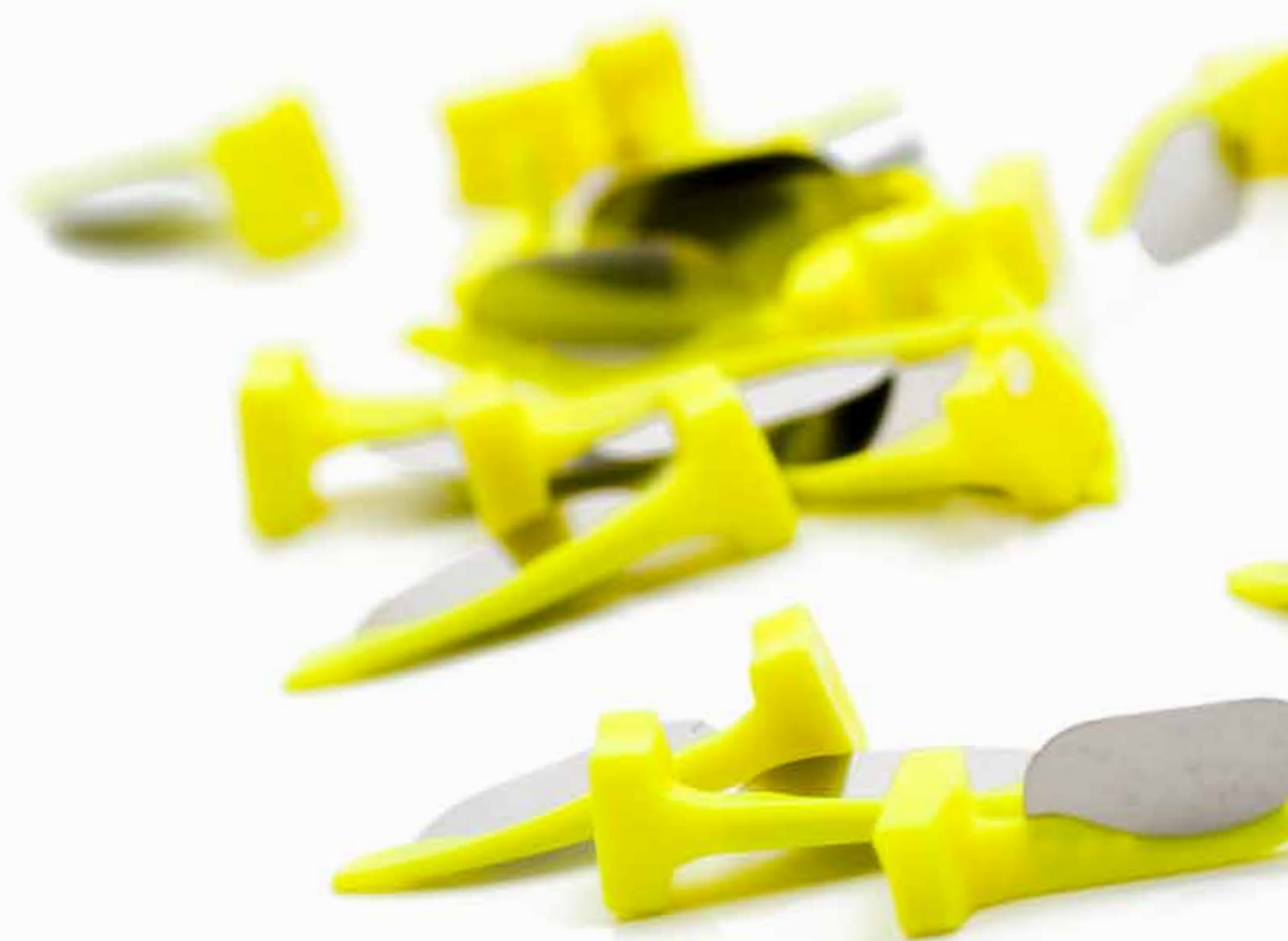


Food approved plastic (Polypropylene) and colour. Stainless Steel. t= 0,10 mm
FenderMate is a registered trademark owned by Directa AB. Registered Design and Patent pending.

PRIME
FENDERMATE[®]
Design by Dentists™



Clinical Innovations Awards 2013
Winner
FenderPrime



Fast & safe restorative dentistry with children in mind.

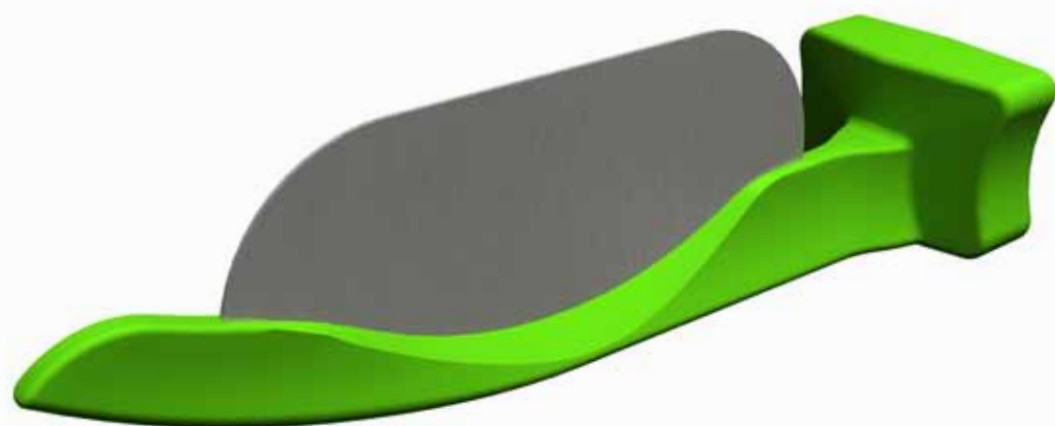
FenderMate Prime is a unique combination of a preparation shield and matrix for Class II fillings of primary teeth where quick and simple solutions are highly valued.

4 reasons to use FenderMate® Prime

#1

Designed for primary teeth

The optimized proportions ensure predictable results.



#3 One piece design

Designed to be used for protection during preparation and as a matrix for class II fillings on primary teeth.

#2

Easy placement

Facilitates a high quality, fast and secure treatment.

#4

Bendable

Adapts to the curvature of the tooth for a more natural anatomic shape. Minimal finishing required.

Fast & safe restorative dentistry

with children in mind.

FENDERMATE[®] PRIME
Design by Dentists™



1. Insert FenderMate Prime lingually or buccally.



2. Prepare the cavity whilst protecting adjacent tooth and gingiva.



3. Bend the matrix to the contour of the tooth and restore.*



4. Safety tip: FenderMate Prime can be secured with a waxed floss.

Quick & Easy Matrix for Primary Teeth

A unique combination of a preparation shield and matrix for Class II fillings of primary teeth where quick and simple solutions are highly valued.

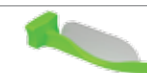
FenderMate Prime is an interproximal plastic wedge with an inbuilt steel plate. The “boat-shaped” tip allows the gingiva to be compressed without damage and reduces the risk for bleeding. FenderPrime Green (long) can be shaped to the contour of the tooth.

*FenderMate Prime is available in two sizes, long and short. FenderMate Prime green (the long wedge) is bendable. FenderMate Prime yellow has a shorter, more rigid plate for very tight interproximal spaces.

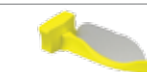
FenderMate® Prime

Prod No	Product Description	Quantity
602815	Assortment	2x18 pcs
602816	Short, Neon Yellow	18 pcs
602817	Long, Neon Green	18 pcs
602808	FenderMate Prime Value Pack, Short, Neon Yellow	100 pcs
602809	FenderMate Prime Value Pack, Long, Neon Green	100 pcs

Long



Short



Food approved plastic (Polypropene) and colour. Stainless Steel. t= 0,08 mm (yellow) and 0,10 mm (green). FenderMate Prime is a registered trademark owned by Directa AB. Registered Design and Patent pending.



CoForm™ For Temporary and Permanent class IV Composite Restorations.

CoForm, matrix system, is a unique set of pre-formed transparent matrices, made of celluloid plastic that are specifically designed to deal with composite Class IV restorations as well as various tooth fractures.

The method and advantages of celluloid plastic matrices. The cavity is filled in layers in the usual manner. The only difference is that when the last layer is placed, instead of shaping and curing, the matrix is pressed onto the uncured composite giving the restoration the anatomy of a healthy tooth. The composite is then cured through the clear matrix.

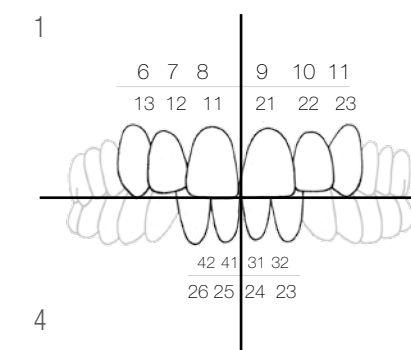
- Four sizes of ready-cut mesial and distal corners
- Aids placement of composite- Work with 1 or 2 layer technique
- Does not adhere to composite
- For fast and precise class IV fillings

CoForm™

Prod No	Product Description	Quantity
604034	Assortment B: 11M/D, 21M/D, 12M/D, 22M/D	64 pcs
604035	Assortment A: 1 of each refill	128 pcs
604036 - 51 Refills	(see list below)	8 pcs

Product No's for refill packages supplied in multiples of 10

Prod No	Product Description
604036	11 Mesial
604037	11 Distal
604038	21 Mesial
604039	21 Distal
604040	12 Mesial
604041	12 Distal
604042	22 Mesial
604043	22 Distal
604044	13 Mesial
604045	13 Distal
604046	23 Mesial
604047	23 Distal
604048	31-32 Mesial
604049	31-32 Distal
604050	41-42 Mesial
604051	41-42 Distal



4 reasons to use ProxyPal® 3D Matrix

#1

Deep Curvature

The distinct curvature is suitable for diastema closure. By pushing/pulling the matrix it is easy to find a suitable position for every tooth.

#2

Shallow Curvature

The curvature is subtle which is ideal for lower jaw incisors.

#3

Cervical Edge

The cervical edge forms an artificial cement-enamel junction (CEJ) forming the interdental papilla and preventing "black triangle disease". The cervical edge blocks moisture from the surrounding tissue that contaminates the cavity.

#4

3D Contour Matrix

One matrix for all front fillings. Progressive contour.

Specially designed for Diastema Closure and treatment of black triangle disease! /Directa

ProxyPal®

Prod No	Product Description	Quantity
604092	ProxyPal 3D Anterior Matrix	36 pcs



1. Indications for use: Class IV, Large Class III, Closure of diastema.



2. Carefully apply the matrix band's so that the edge goes into the pocket. By pushing/pulling search the bands ideal position for the best proximal shape. Cut the matrix if needed. The contour design stabilizes the matrix during the entire process.



3. The band can also be fixed by allowing it to go around the palatal surface and back into the interdental space on the other side. This technique can also be used with double proximal fillings.

ProxyPal®
Design by Dentists™

The pre-shaped progressive curvature aids to create incisial fillings with a correct anatomical shape.

The proximal curvature differs from tooth to tooth. In order to achieve a perfect filling the matrix has been designed so that the curvature of the matrix escalates linearly along its total length. On one end the curvature is subtle which is ideal for lower jaw incisors. On the other end the matrix curvature is distinct thus suitable i.e. a diastema closure. By pushing/pulling the matrix it is easy to find a suitable position for every tooth. The matrix has a cervical edge which inserts into the soft tissue pocket. The cervical edge blocks moisture from the surrounding tissue that contaminates the cavity and stabilizes the matrix during insertion of filling material. Indications for use: Class IV, Large Class III, Closure of diastema.

Instruction: After preparation of the cavity, carefully apply the matrix band so that the cervical edge goes into the pocket. By pushing/pulling search the bands ideal position for the best approximal shape. Cut the matrix if needed. The contour design stabilizes the matrix during the entire process. The band can sometimes be fixed by allowing it to go around the palatal surface and back into the interdental space on the other side. This technique can also be used with double approximal fillings.

**Identifying contact points on crowns
and bridges has never been easier!**

Directa's new contact finder Spot it is a coloured marker available on straight and angled handle.

4 reasons to use SpotIt® C&B contact finder

#1

Exact indication for adjustment of C&B work

Spot it simplifies adjustment of C&B contact points.
Exact indication of contact points.



#3

Easy handling

Easy to use - no assistance needed.
Time-saving and accurate.

#2

Optimal access

Optimal access thanks to straight and angled design.



#4

No mess

Clear indication, leaves no marks outside the contact area.
Can be used without assistance.

SpotIt®

Prod No	Product Description	Quantity
690112	SpotIt Assortment	9+9 pcs
690110	SpotIt Refill Straight	18 pcs
690111	SpotIt Refill Angled	18 pcs

C & B contact finder for exact fitting of prosthetics.

SpotIt
Design by Dentists™



1. Place crown or bridge.



2. Push SpotIt through the contact to get the indication mark.



3. The exact indication of where trimming is needed.



4. Indication after removed bridge.

Spot it C&B contact finder

Identifying contact points on crowns and bridges has never been easy.

Before cementation of conventional crowns, bridges and implant prosthetics, it is necessary to assess the relationship of the crown to the neighboring teeth. Occlusion paper is often used to check the contact point. This method however shows a too broad and inaccurate contact point with the subsequent risk of excessive adjustment, often resulting in too large contact point.

Directa's new contact finder Spot it is a coloured marker available on straight and angled handle. As the marker traverses the contact between the prosthetic element and the adjacent tooth it leaves a clear and accurate indication of the adjustment needed for a perfect contact point. The whole operation can be performed without assistance - holding the crown with one hand and the marker with the other hand.

Identifying contact points on crowns and bridges has never been easier!

Straight



Angled

