

NEW

# Variolink® Esthetic

The esthetic luting composite

**“Amazingly simple  
esthetics!”**

Recommended for  
**IPS e.max®**



**ivoclar  
vivadent®**  
passion vision innovation

# Variolink® Esthetic

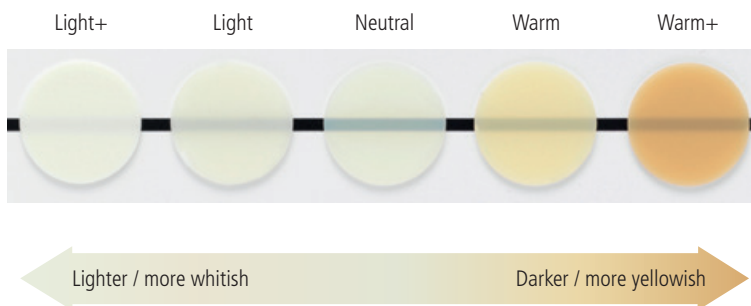
## EXCEPTIONAL ESTHETICS

Variolink Esthetic is an esthetic light- and dual-curing luting composite for the permanent cementation of demanding ceramic and composite resin restorations. The cement is based on the esthetic luting composites Variolink II and Variolink Veneer, which have proven their worth in clinical use for many years.



### The Effect shade concept

In order to precisely match the shade effect of the restoration with the adjacent natural dentition, Ivoclar Vivadent has developed the new, balanced and concise Effect shade system. The "Neutral" shade demonstrates the highest translucency level and therefore enables colour-neutral cementation of the restoration. The shades "Light" and "Light+" produce a gradual brightening effect, whereas the shades "Warm" and "Warm+" result in the gradual darkening of the overlying ceramic and composite restoration. The shades are named according to their effects. This simplifies the selection of the appropriate cementation material in clinical use.

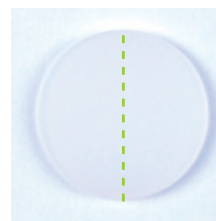


### Excellent shade stability



Variolink Esthetic demonstrates exceptional shade stability. This is made possible by the patented, reactive light initiator Ivocerin®, which is 100 per cent free of amine-based co-initiators. Variolink Esthetic forms the basis for long-lasting and reliable esthetic results. Even if exposed to intensive light or a humid environment, Variolink Esthetic is not subject to visible shade changes.

The exceptional esthetics of Variolink Esthetic is furthermore enhanced by its lifelike fluorescence similar to that of natural teeth. Additionally, the luting composite is very resistant to wear, thus ensuring a good marginal quality of the restoration while in place.



Variolink Esthetic Suntest  
(acc. to ISO 4049),  
left side exposed to light



Variolink Esthetic reference      After immersion  
in water

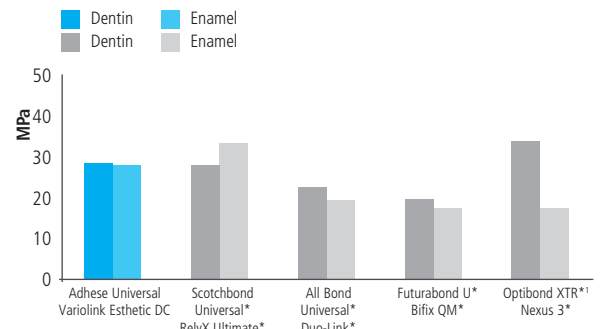
# ONE SYSTEM FOR CLINICAL SUCCESS



## Optimal bonding

The adhesive material Adhese® Universal with its unique VivaPen® delivery form ideally complements Variolink Esthetic in the cementation of esthetically demanding restorations. Adhese Universal is quickly and conveniently applied in the patient's mouth. It is compatible with all etching techniques and allows the clinician to flexibly react to the clinical indication at hand. The technique- and fault-tolerant Adhese Universal ensures consistently high bond strengths and minimizes the risk of postoperative sensitivities. Naturally, Variolink Esthetic can also be used in combination with the established adhesives Syntac® and ExciTE® F.

## Shear bond strength after dual-curing – selective enamel etching on enamel and dentin after 10,000 thermocycles



<sup>1</sup> self-etch technique, because Optibond XTR is not indicated for selective enamel etching.

\* Not registered trademarks of Ivoclar Vivadent AG.

Source: R&D Ivoclar Vivadent AG, Schaan, 2013–2015

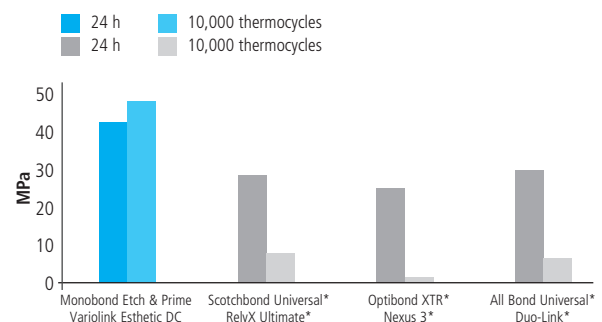


## Ideal solution for glass-ceramic restorations

Variolink Esthetic produces excellent bond strength values on restorations made of glass-ceramics, e.g. IPS e.max® CAD/Press or IPS Empress® CAD/Esthetic, when used in combination with Monobond Etch & Prime®, the world's first self-etching glass-ceramic primer. The single-component ceramic primer etches and silanates glass-ceramic surfaces in one easy step. Etching the contact surfaces with the unpopular hydrofluoric acid is no longer required.



## Tensile strength on lithium-disilicate glass-ceramic IPS e.max® CAD initially and after ageing



\* Not registered trademarks of Ivoclar Vivadent AG.

Source: R&D Ivoclar Vivadent AG, Schaan, 2014

# DELIVERY FORMS



## **Variolink Esthetic LC System Kit** (only light-curing)

3 syringes Variolink Esthetic LC, 2 g (light, neutral, warm)  
 3 syringes Variolink Esthetic Try-In Paste, 1.7 g (light, neutral, warm)  
 1 syringe Total Etch, 2 g  
 1 Adhese Universal VivaPen, 2 ml, or 1 bottle, 5 g  
 1 bottle Monobond Plus, 5 g  
 1 syringe Liquid Strip, 2.5 g  
 Various accessories

666433WW with Adhese Universal VivaPen, 2 ml  
 666065WW with Adhese Universal bottle, 5 g

## **Variolink Esthetic DC System Kit** (dual-curing)

3 automix syringes Variolink Esthetic DC, 5 g (light, neutral, warm)  
 3 syringes Variolink Esthetic Try-In Paste, 1.7 g (light, neutral, warm)  
 1 syringe Total Etch, 2 g  
 1 Adhese Universal VivaPen, 2 ml, or 1 bottle, 5 g  
 1 bottle Monobond Plus, 5 g  
 1 syringe Liquid Strip, 2.5 g  
 Various accessories

666434WW with Adhese Universal VivaPen, 2 ml  
 666125WW with Adhese Universal bottle, 5 g

## **Variolink Esthetic LC System Kit IPS e.max** (only light-curing)

3 syringes Variolink Esthetic LC, 2 g (light, neutral, warm)  
 3 syringes Variolink Esthetic Try-In-Paste, 1.7 g (light, neutral, warm)  
 1 syringe Total Etch, 2 g  
 1 Adhese Universal VivaPen, 2 ml  
 1 bottle Monobond Etch & Prime, 5 g  
 1 syringe Liquid Strip, 2.5 g  
 Various accessories

681493WW

## **Variolink Esthetic DC System Kit IPS e.max** (dual-curing)

3 automix syringes Variolink Esthetic DC, 5 g (light, neutral, warm)  
 3 syringes Variolink Esthetic Try-In-Paste, 1.7 g (light, neutral, warm)  
 1 syringe Total Etch, 2 g  
 1 Adhese Universal VivaPen, 2 ml  
 1 bottle Monobond Etch & Prime, 5 g  
 1 syringe Liquid Strip, 2.5 g  
 Various accessories

681492WW



## **Variolink Esthetic LC Refill** (only light-curing)

1 syringe, 2 g (in the selected shade)  
 5 application tips  
 666126WW Light+  
 666127WW Light  
 666128WW Neutral  
 666129WW Warm  
 666130WW Warm+

## **Variolink Esthetic DC Refill** (dual-curing)

1 automix syringe, 5 g (in the selected shade)  
 10 mixing tips  
 666117WW Light+  
 666118WW Light  
 666119WW Neutral  
 666120WW Warm  
 666121WW Warm+

## **Variolink Esthetic DC Refill** (dual-curing)

1 automix syringe, 9 g (in the selected shade)  
 15 mixing tips  
 666122WW Light  
 666123WW Neutral  
 666124WW Warm

## **Variolink Esthetic Try-In Paste Refill**

1 syringe, 1.7 g (in the selected shade)  
 5 application tips  
 666067WW Light+  
 666113WW Light  
 666114WW Neutral  
 666115WW Warm  
 666116WW Warm+

## **Accessories**

645951 mixing tips, short, pointy, refill, 15 units  
 559224 Variolink application tips, refill, 20 units



## **Finding your way out of the cements maze**

The **Cementation Navigation System**, a popular multimedia application from Ivoclar Vivadent, offers dentists practical orientation and guidance in the selection of the best luting material for each case.

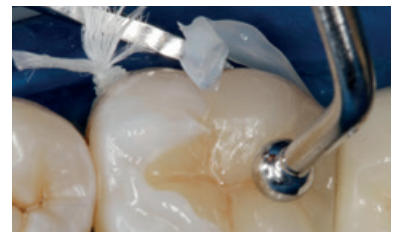
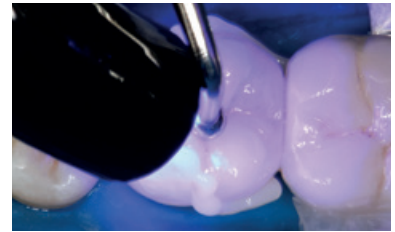
[www.cementation-navigation.com](http://www.cementation-navigation.com)

# USER-FRIENDLY PROCESSING

## Easy excess removal

In the past, adhesive luting composites were rather complex to use due to the difficult removal of excess material. Now, Variolink Esthetic sets a new benchmark in this respect.

The smart combination of the reactive light initiator Ivocerin and a light sensitivity filter allows the dental professional to easily remove excess material after successful pre-polymerization with light. Ivocerin ensures fast and reliable curing of the material during the final light polymerization process.

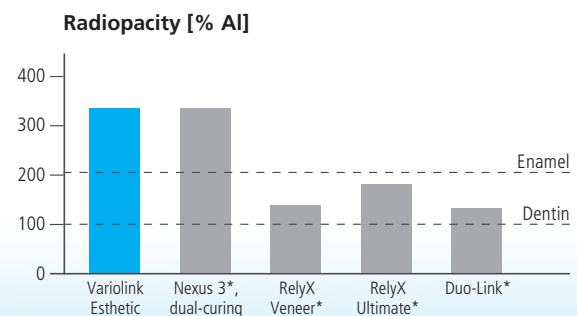


## Flexible, situational consistency

The viscosity controller optimally combines the material's good flowing behaviour with its stability. The cement is easy to extrude from the syringe. Excess material smoothly flows from the cement gap, but remains stable at the cementation joint so that it can be readily removed.

## Impressive radiodiagnostics

Variolink Esthetic continues the tradition of its predecessor material Variolink II in terms of its radiopacity. The material's high radiopacity makes it easier to detect excess cement and secondary caries.



\* Not registered trademarks of Ivoclar Vivadent AG.

Source: R&D Ivoclar Vivadent AG, Schaan, 2014 (measured according to ISO 4049)





## Fixed Prosthetics

Variolink® Esthetic forms a part of the “Fixed Prosthetics” product category. The products of this category cover the procedure involved in the fabrication of fixed prosthetic restorations – from temporization to restoration care. The products are optimally coordinated with each other and enable successful processing and application.



### THESE ARE FURTHER PRODUCTS OF THIS CATEGORY:

#### IPS e.max® System

all ceramic – all you need



The comprehensive solution covering all indications

- Highly esthetic, high-strength materials for the press and CAD/CAM technique
- Unique lithium disilicate (LS<sub>2</sub>) and zirconium oxide (ZrO<sub>2</sub>) ceramics for restorations ranging from thin veneers to long-span bridges
- Flexibility of cementation: adhesive, self-adhesive and conventional

#### Fluor Protector S

The protective fluoride varnish



Homogeneous protective varnish in a dispensing tube

- Immediate fluoridation of enamel
- High-yielding fluoride depot
- Mild taste

Would you like to know more about the products of the “Fixed Prosthetics” category? Simply get in touch with your contact person at Ivoclar Vivadent or visit [www.ivoclarvivadent.com](http://www.ivoclarvivadent.com) for more information.