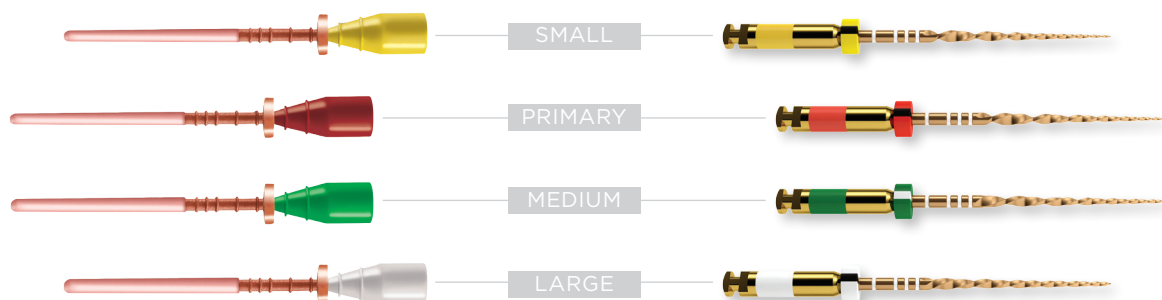


**+**  
**WE  
KNOW  
ENDO.**



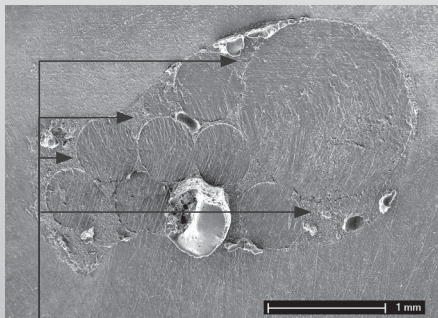
## GuttaCore® for WaveOne® Gold Two proven systems. One complete solution.

Complete your WaveOne Gold system with GuttaCore for WaveOne Gold. Now the predictability of WaveOne Gold shaping is paired perfectly with the three-dimensional fill of GuttaCore. GuttaCore for WaveOne Gold obturators are sized and color-coded to precisely match the WaveOne Gold file system so you can shape and obturate with confidence.

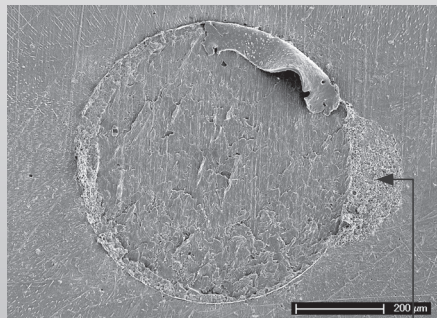


# GuttaCore® fills the entire canal anatomy

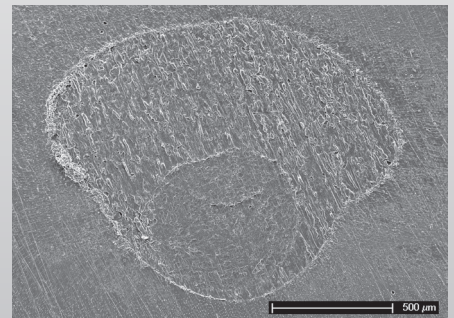
Scientific studies show GuttaCore's effectiveness compared to other techniques in achieving a complete fill throughout the canal system. GuttaCore delivers the highest gutta-percha content with fewer apical and coronal voids than cold lateral techniques.<sup>1</sup>



Note the abundance of voids in this cold lateral SEM cross-section.  
**Gutta-percha gap**



The interfacial gap in this warm vertical SEM cross-section is a flap of PVA material extruding from the specimen surface.  
**Gutta-percha gap**



The SEM cross-section of a canal filled with GuttaCore shows a complete fill.  
**All gutta-percha**

Images courtesy of Dr. Franklin R. Tay

## GuttaCore® for WaveOne® Gold Obturators



### Blister of 5x Obturators\*

Small	BNSGCWG500SML
Primary	BNSGCWG500PRI
Medium	BNSGCWG500MED
Large	BNSGCWG500LRG

### Box of 25 Obturators (5 Blisters)

Small	BNSGCWGC00SML
Primary	BNSGCWGC00PRI
Medium	BNSGCWGC00MED
Large	BNSGCWGC00LRG

## GuttaCore® for WaveOne® Gold Size Verifiers



### Blister of 6x Size Verifiers

Small	BNSGCWG625SML
Primary	BNSGCWG625PRI
Medium	BNSGCWG625MED
Large	BNSGCWG625LRG

1. Quality of obturation achieved by an endodontic core-carrier system with crosslinked gutta-percha carrier in single-rooted canals.; Li GH et al., J Dent. 2014, 42(9): 1124-1134

\*Includes one size verifier in every blister.