

Esthetics made easy

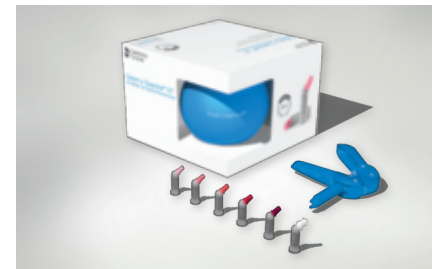
Ian Cline, UK

José Bahillo, Spain

Manuel Pinon, Spain

Ceram.x Spectra™ ST Compules Tips Intro Kit
 24 Compules® Tips à 0.25 g
 (4 x A1; 4 x A2; 8 x A3; 4 x A3.5; 4 x A4)
 1 Compules® Tips Gun

607.01.570N



5 Syringes à 3 g
(A1; A2; A3; A3.5; A4)
Accessories



Shades

A1 (= VITA®^{®1} shades A1; B1; C1)

A2 (= VITA®^{®1} shades A2; B2; D2)

A3 (= VITA®^{®1} shades A3; C2; D3; D4)

A3.5 (= VITA®^{®1} shades A3.5; B3; B4; C3)

A4 (= VITA®^{®1} shades A4; C4)

BW (Bleach White)

(16 x 0.25 g)
607.01.571N
607.01.572N
607.01.573N
607.01.575N
607.01.574N
607.01.576N

(1 x 3 g)
607.01.551N
607.01.552N
607.01.553N
607.01.555N
607.01.554N



Shades
A2 (= VITA®1 A2; B2; D2)
A3 (= VITA®1 A3; C2; D3; D4)

(52 x 0.25 g)
607.01.582N
607.01.583N



Technical features			
Curing time, 2 mm	≥ 800 mW: 10 s ≥ 500 mW: 20 s	Working time (10.000 lx)	130 s
Filler content¹	Up to 79 % weight Up to 61 % volume	Compressive strength	400 MPa
Shrinkage (Archimedes)	2.3 vol-%	Flexural strength	135 MPa
Shrinkage stress (ADA)	2.98 MPa	Flexural modulus	8.5 GPa
Radiopacity	2.3 mm Al	Vickers hardness (VH5/10s)	60

¹ SphereTEC and conventional filler as well as ytterbium fluoride; content varies $\pm 2\%$ among shades.

THE DENTAL
SOLUTIONS
COMPANY™



THE DENTAL
SOLUTIONS
COMPANY™



© Dentsply Sirona 12/2018



Ceram.x Spectra™ ST
Universal Composite Restorative

Excellent adaptation
and sculptability



Ceram.x Spectra™ ST

Exceptional Handling

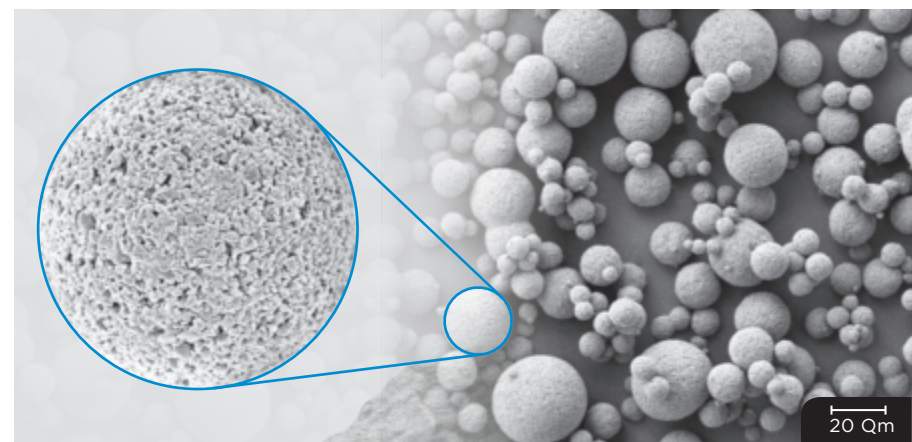
A new filler technology containing granulated spherical fillers in combination with an optimised resin matrix system results in preferred handling properties:

- Adapts easily to cavity surfaces
- Doesn't stick to hand instruments
- Easy to sculpt
- Slump resistant

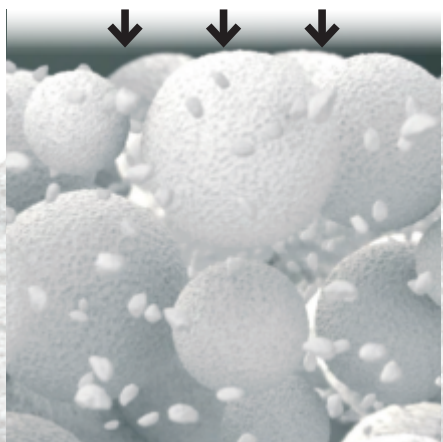
Explore the novel filler technology

Ceram.x Spectra™ ST

Ceram.x Spectra™ ST is based on the advanced granulated filler technology SphereTEC™ which is patent applied. SphereTEC™ stands for the process of manufacturing microscaled, well-defined spherical superstructures, comprising of submicron glass. The SphereTEC™ fillers' morphology, particle size distribution and surface micro-structure are key for the enhanced handling comfort and esthetic outcome.



Microstructured surface of a SphereTEC™ filler (d3.50 - 15 µm), obtained via spray-granulation process from submicron glass fillers.



SEM picture showing SphereTEC™ spherical prepolymerised fillers providing a ball-bearing effect that enables excellent adaptation and sculptability.

The micro-granulated structure of SphereTEC™ is able to bind more free resin compared to usual fillers. Therefore Ceram.x Spectra™ ST does not stick to hand instruments.



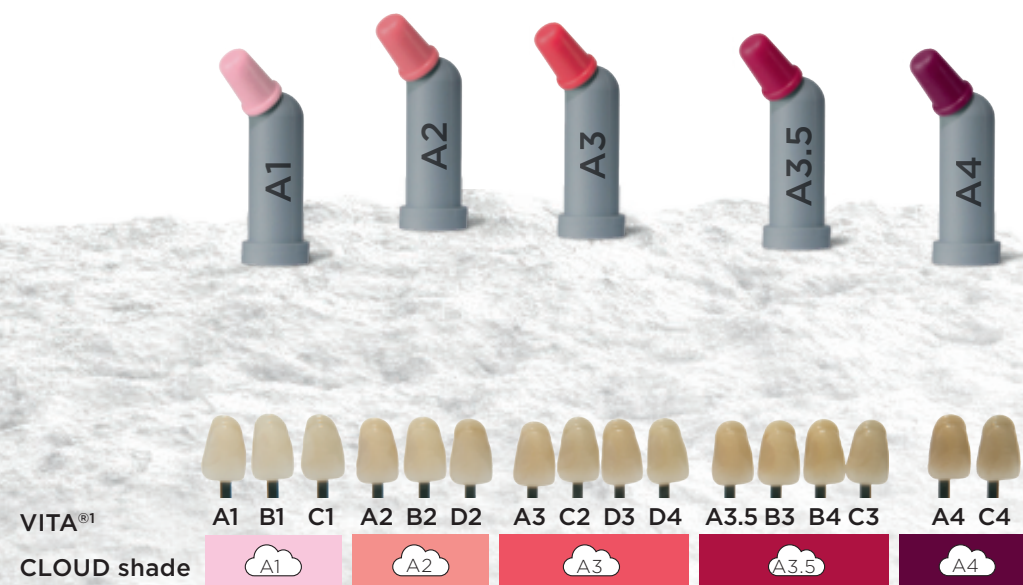
Dr. Wilhelm Bestler, Germany
“Perfect shade match and optimum sculptability at the same time!”

Extremely simple

CLOUD shade concept

The new CLOUD shade concept is designed to achieve shade match with the full range of VITA® shades with a minimised number of universal shades. Ceram.x Spectra™ ST contains five CLOUD shades of moderate translucency named A1 to A4.²

- 5 CLOUD shades cover the full VITA® range
- Reliable shade match thanks to a distinct chameleon effect
- Smart i-shade label for a quick translation into VITA®¹



¹ VITA® is not a registered trademark of Dentsply Sirona.
² Additionally a Bleach White shade is available in Compules® Tips for the restoration of bleached teeth!

Ceram.x Spectra™ ST –
The Universal Composite
restorative for all cavity classes

Experience

Fast and easy polishing

Ceram.x Spectra™ ST provides a fast and easy polishing procedure with both, silicon based polishers and abrasive discs, resulting in an outstanding gloss.¹



After preparation



After finishing

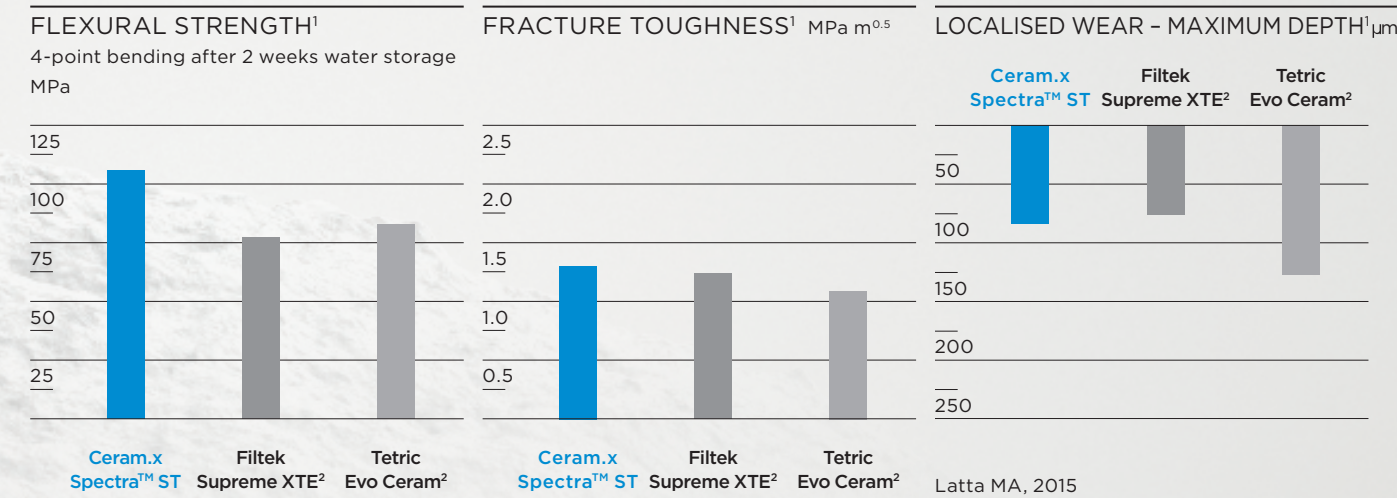


After 20 sec. polishing

Extra strong for

Long lasting restorations

Ceram.x Spectra™ ST is an ideal universal composite for durable stress bearing posterior restorations.



Lohbauer U and Belli R, 2015

High flexural strength is considered by international standards to be an important mechanical property for posterior restorations bearing occlusal stress.

Lohbauer U and Belli R, 2015

High fracture toughness is needed to resist propagation of cracks in the material and improves longevity of a restoration.

Latta MA, 2015

Low loss of material is beneficial in occlusal contact areas under chewing forces for a stable occlusion.

¹ Data on file; available upon request, see contact details.
² Not a registered trademark of Dentsply Sirona.