

Esthetics made easy

Ian Cline, UK

José Bahillo, Spain

Manuel Pinon, Spain

Ceram.x Spectra™ ST Compules Tips Intro Kit
24 Compules® Tips à 0.25 g
(4 x A1; 4 x A2; 8 x A3; 4 x A3.5; 4 x A4)
1 Compules® Tips Gun

607.01.570N



5 Syringes à 3 g
(A1; A2; A3; A3.5; A4)
Accessories



Shades

A1 (= VITA®^{®1} shades A1; B1; C1)

A2 (= VITA®^{®1} shades A2; B2; D2)

A3 (= VITA®^{®1} shades A3; C2; D3; D4)

A3.5 (= VITA®^{®1} shades A3.5; B3; B4; C3)

A4 (= VITA®^{®1} shades A4; C4)

BW (Bleach White)

(16 x 0.25 g)
607.01.571N
607.01.572N
607.01.573N
607.01.575N
607.01.574N
607.01.576N

(1 x 3 g)
607.01.551N
607.01.552N
607.01.553N
607.01.555N
607.01.554N



Shades
A2 (= VITA[®] A2; B2; D2)
A3 (= VITA[®] A3; C2; D3; D4)

(52 x 0.25 g)
607.01.582N
607.01.583N



Technical features			
Curing time, 2 mm	≥ 800 mW: 10 s ≥ 500 mW: 20 s	Working time (10.000 lx)	130 s
Filler content¹	Up to 79 % weight Up to 61 % volume	Compressive strength	400 MPa
Shrinkage (Archimedes)	2.3 vol-%	Flexural strength	135 MPa
Shrinkage stress (ADA)	2.98 MPa	Flexural modulus	8.5 GPa
Radiopacity	2.3 mm Al	Vickers hardness (VH5/10s)	60

¹ SphereTEC and conventional filler as well as ytterbium fluoride; content varies $\pm 2\%$ among shades.



Ceram.x Spectra™ ST

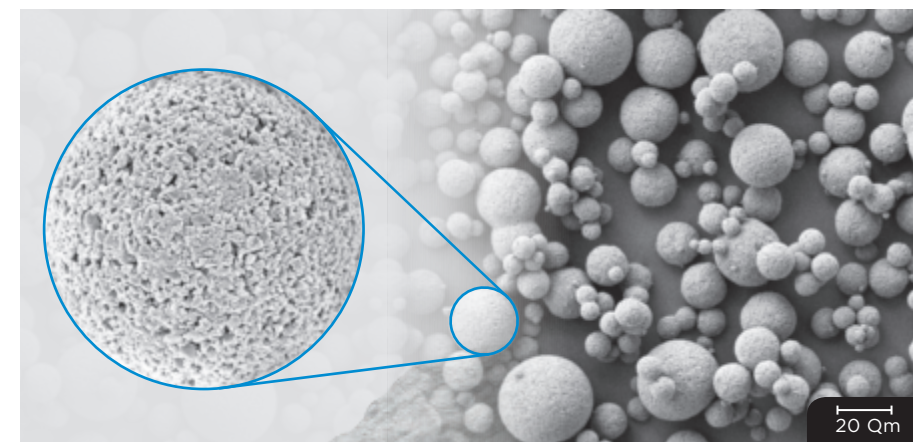
Exceptional Handling

A new filler technology containing granulated spherical fillers in combination with an optimised resin matrix system results in preferred handling properties:

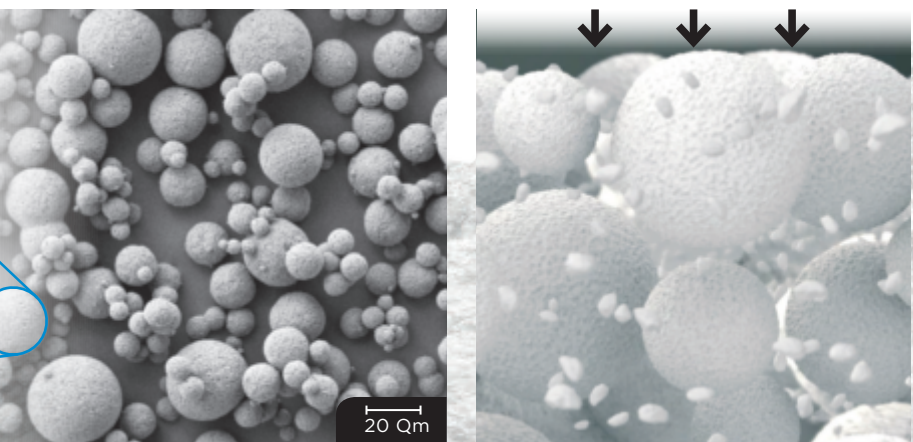
- Adapts easily to cavity surfaces
- Doesn't stick to hand instruments
- Easy to sculpt
- Slump resistant

Explore the novel filler technology Ceram.x Spectra™ ST

Ceram.x Spectra™ ST is based on the advanced granulated filler technology SphereTEC™ which is patent applied. SphereTEC™ stands for the process of manufacturing microscaled, well-defined spherical superstructures, comprising of submicron glass. The SphereTEC™ fillers' morphology, particle size distribution and surface micro-structure are key for the enhanced handling comfort and esthetic outcome.



Microstructured surface of a SphereTEC™ filler (d3.50 - 15 µm), obtained via spray-granulation process from submicron glass fillers.



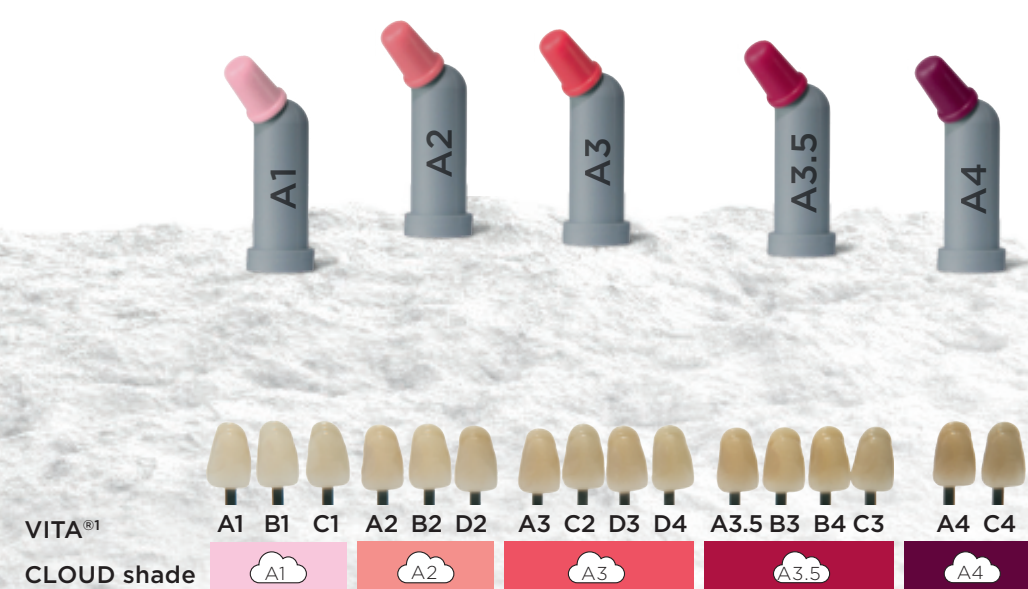
SEM picture showing SphereTEC™ spherical prepolymerised fillers providing a ball-bearing effect that enables excellent adaptation and sculptability.



Extremely simple CLOUD shade concept

The new CLOUD shade concept is designed to achieve shade match with the full range of VITA® shades with a minimised number of universal shades. Ceram.x Spectra™ ST contains five CLOUD shades of moderate translucency named A1 to A4.²

- 5 CLOUD shades cover the full VITA® range
- Reliable shade match thanks to a distinct chameleon effect
- Smart i-shade label for a quick translation into VITA®¹



Dr. Wilhelm Bestler, Germany
“Perfect shade match and optimum sculptability at the same time!”

Ceram.x Spectra™ ST –
The Universal Composite
restorative for all cavity classes

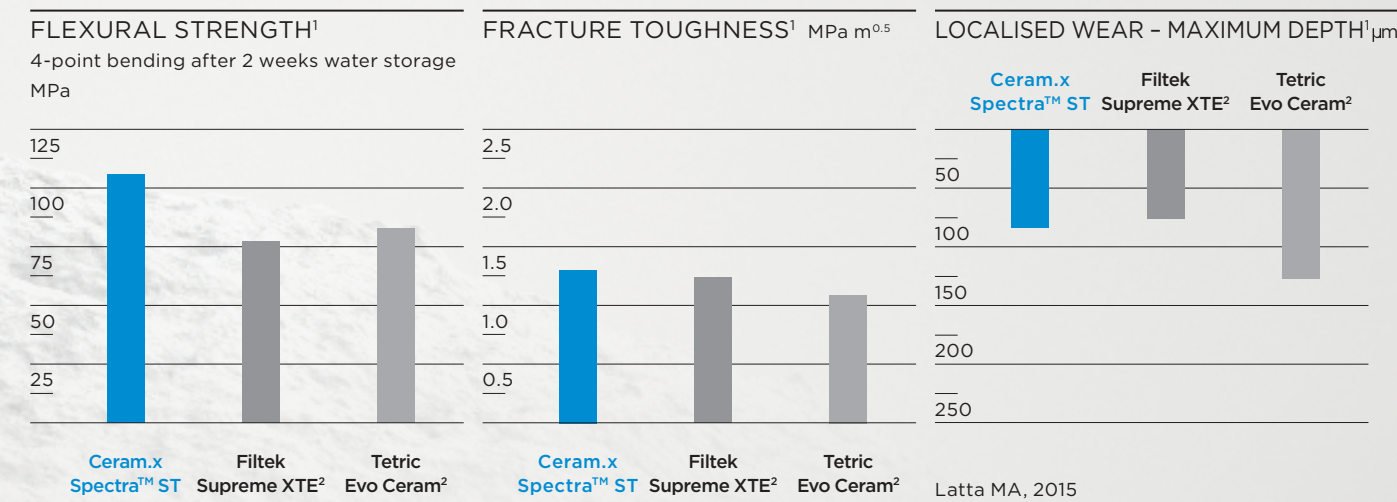
Experience Fast and easy polishing

Ceram.x Spectra™ ST provides a fast and easy polishing procedure with both, silicon based polishers and abrasive discs, resulting in an outstanding gloss.¹



Extra strong for Long lasting restorations

Ceram.x Spectra™ ST is an ideal universal composite for durable stress bearing posterior restorations.



Lohbauer U and Belli R, 2015

High flexural strength is considered by international standards to be an important mechanical property for posterior restorations bearing occlusal stress.

Lohbauer U and Belli R, 2015

High fracture toughness is needed to resist propagation of cracks in the material and improves longevity of a restoration.

Latta MA, 2015

Low loss of material is beneficial in occlusal contact areas under chewing forces for a stable occlusion.

¹ VITA® is not a registered trademark of Dentsply Sirona.
² Additionally a Bleach White shade is available in Compules® Tips for the restoration of bleached teeth!

¹ Data on file; available upon request, see contact details.
² Not a registered trademark of Dentsply Sirona.