

 **SOREDEX**

DIGORA[®] Optime



Small. Smart. Fast.
Digital imaging plate system

A pioneer with 15 years of experience

Summary of benefits



EASY TO USE

- Graphical user interface supports easy workflow
- Image preview



FAST AND AUTOMATED

- Fast image readout
- Touchless operation



EXCELLENT CLINICAL RESULTS

- Repeatable image density
- Cutting edge imaging plates
- Comfortable for the patient



DESIGNED FOR YOUR PRACTICE

- Uniquely hygienic
- Small footprint with many installation options
- Sharing between operatories



SOREDEX® has over 30 years of expertise in state-of-the-art dental imaging systems. As other SOREDEX products, the DIGORA® Optime is easy to use and provides excellent clinical results. The product has a 15 year history and has become the preferred choice of dental professionals around the world.

Your best choice for digital intraoral imaging



BENEFITS VS. FILM

- Digital images instantly available
- Image archiving and distribution
- Digital image processing
- No harmful chemicals
- Full daylight system



BENEFITS VS. SENSORS

- Four intraoral sizes available
- Thin, flexible and comfortable imaging plates
- 100% active area
- No cables
- Shareable over the network
- Wide dynamic range
- Familiar workflow and accessories from film



Small. Smart. Fast.

Fast and automated



Small. Smart. Fast.

Touchless operation

The system automatically detects your approaching hand and instantly prepares itself. Image readout starts automatically after you have inserted the imaging plate and move your hand away from the unit.

Lightning fast image readout

A high quality size 2 image is read in 5 seconds! The readout process is complete before the user has prepared the next plate.

Automatic plate detection and erasing

The system automatically detects the size of the imaging plate – no cumbersome cassettes, plate guides or drums are needed. Imaging plates are automatically erased without user interaction and are immediately ready for reuse.

Easy to use

Continuing the SOREDEX heritage of easy-to-use imaging equipment, the DIGORA® Optime takes usability to the next level. The system has self-guiding tutorials with clear visual aids. Even the most novice users will be able to use the system.



Visually guided use

The DIGORA® Optime supports users with clear animations. New users quickly learn how to use the system and experienced users can refresh their memory whenever needed.



Image preview

The scanned image is shown on the screen. The user can immediately verify that the image is OK or if a retake is needed, for example because of a cone cut.



Sharing with Multiconnect

Images can be sent to multiple workstations over the network. The system indicates which workstation have been reserved and to which workstation the images will be sent. This eliminates the need to have a dedicated PC next to the DIGORA® Optime.

15 years of experience



Superior results through 15 years of experience

By choosing the DIGORA® Optime, you can enjoy the results of over 15 years of research and development in intraoral imaging plate systems. SOREDEX believes in continuous improvement and has incorporated hundreds of improvement suggestions from our customers. Over the years, we have perfected laser technology, readout electronics, mechanical solutions and image processing algorithms to provide superb, consistent and long-lasting image quality. The accompanying imaging plates and accessories have been fine-tuned to the last detail to provide you the best possible clinical results, every time.

Small. Smart. Fast.

2009

NEW

DIGORA® Optime

Next generation
usability and hygiene

2008

NEW DT

Imaging plates

Greatly improved
image quality and
durability

2004

DIGORA® Optime

The world's first
chairside imaging
plate system

2000

Digora® PCT

Extraoral imaging
plate system with
intraoral support

1999

Digora® FMX

Patented
AutoLoader
feeding system

1994

Digora®

The world's first
intraoral imaging
plate system

Excellent clinical results

Leading clinical results for all diagnostic needs



Size 0: Pediatric imaging



Size 1: Periapical imaging



Size 2: Bitewing imaging



Size 3: Full bitewing imaging

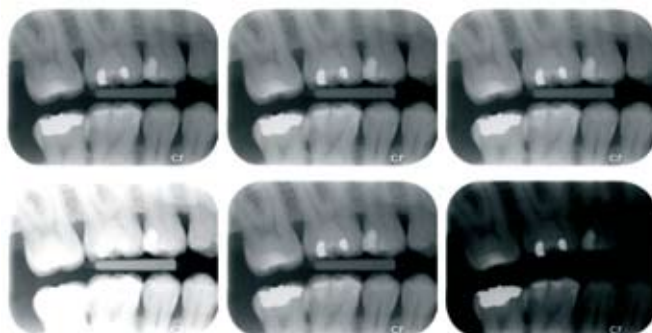
New generation of long-lasting, reusable imaging plates

SOREDEX imaging plates are a result of years of development. The new generation DT (Dynamic&Tough) imaging plates offer three noticeable improvements on their predecessors. Firstly, they have an improved dynamic range, virtually eliminating accidental over and underexposures. Secondly, their resistance to wear and abrasions has been greatly improved. Lastly, the new imaging plates are clearly more sensitive, allowing better image quality with lower dose.

Repeatable, solid image quality without special training

The DIGORA® Optime automatically adjusts the gray levels in images to bring out the diagnostic information that you need. This means consistent results without having to change exposure settings for each patient, with minimized need to adjust images in the application software after image readout. The system is compatible with both AC and DC intraoral X-ray units.

Auto-optimization



Underexposed

Correctly exposed

Overexposed

DIGORA® Optime

Film

Small. Smart. Fast.

Designed for your practice

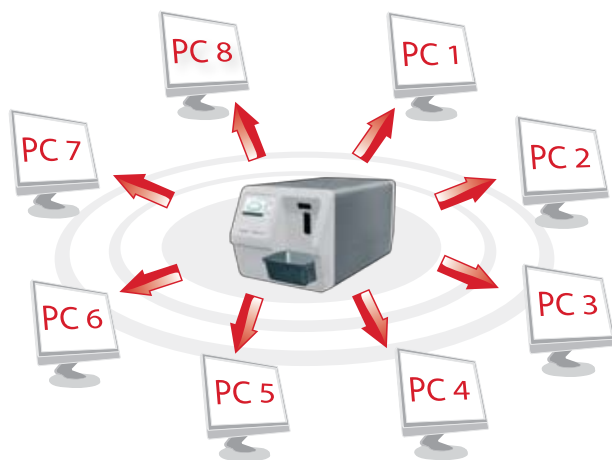


Uniquely hygienic for improved patient and user safety

The DIGORA® Optime can be operated without touching the unit at all! The system has minimal openings and is very easy to keep clean. With the protective covers, imaging plates do not need to be touched. SOREDEX hygiene bags minimize the possibility of cross-contamination.

Small footprint with many installation options

With its Ethernet connection and extremely compact design, the full daylight DIGORA® Optime can be installed most anywhere in the office. The front-loaded unit can be placed into a cabinet or on a shelf. There is also a mounting kit that allows the placement of the system on a wall or under the desktop.



Share your DIGORA® Optime between operatories!

In contrast to USB connected systems, the DIGORA® Optime can be easily shared between up to eight computers on a network. Network sharing is a very cost effective solution for any practice but especially for larger ones and institutions.

New generation of imaging plates

Comfortable for the patient, 100% active area

SOREDEX Optime imaging plates and hygiene bags are very comfortable for the patient. The system can read imaging plates of four standard sizes (0, 1, 2 and 3), allowing you to select the right one for any patient and diagnostic need. In contrast to intraoral sensors or imaging plate systems that require plate cassettes or similar adapters, the entire area of the SOREDEX imaging plates is used for registering clinical information.

Patented IDOT imaging plate identification system

Each IDOT imaging plate is individually marked on the active side. IDOT makes it possible to easily find the imaging plate that was used to take an image.



Small. Smart. Fast.

Comprehensive selection of accessories



Imaging plates

SOREDEX imaging plates are available in four standard intraoral sizes: 0, 1, 2 and 3. Each size has its accompanying protective covers and hygiene bags.

Protective covers

The protective covers protect from cross-contamination, prevent light from entering the plates between exposure and readout, and help in keeping the imaging plates clean and intact from mechanical wear.

Hygiene bags

The new generation Optibag hygiene bags have a novel double sealing mechanism and offer the best hygienic protection possible. Positioning is simple as one side of the bag is transparent. Sealing and opening is effortless. The hygiene bags are made of latex-free, food grade material.

Imaging plate holders

Imaging plates are compatible with typical holders used with film. Full range of compatible holders for periapicals and horizontal bitewings available from SOREDEX distributors.

0

22 x 31 mm
628 x 885 pixels
1.08 MB

1

24 x 40 mm
685 x 1143 pixels
1.53 MB

2

31 x 41 mm
886 x 1171 pixels
2.03 MB

3

27 x 54 mm
771 x 1542 pixels
2.32 MB

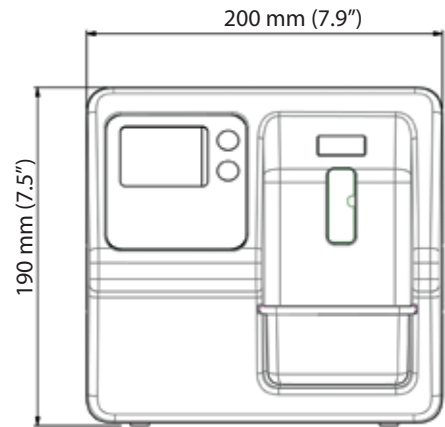
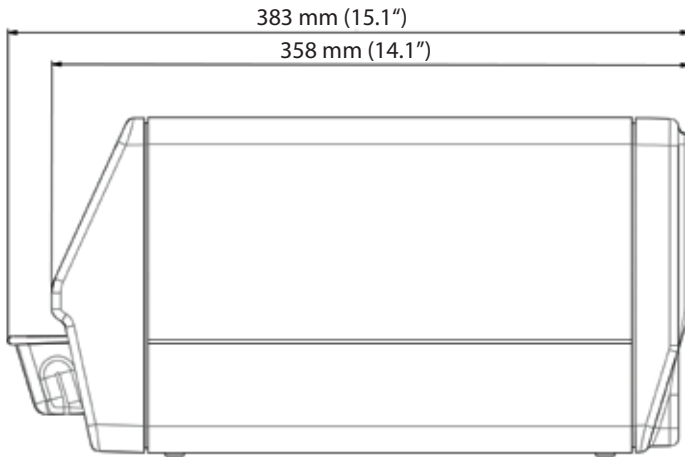


Imaging plate storage box

A handy enclosure keeps imaging plates clean and ready for use.



Technical specifications



DIGORA® Optime DXR-50 001 technical data

Pixel size, selectable	35 µm (Super), 64 µm (High)
Bit depth	14 bits grayscale
Resolution	14.3 lp/mm true resolution
Readout time	4.3 - 7.5 seconds
Connection	Ethernet 1 Gb compliant
DXR 50 Classification IEC60601-1	- Class 1 equipment - Continuous operation - IPX0 (enclosed equipment without protection against ingress of liquids)
Dimensions (H x W x D)	190 mm x 200 mm x 383 mm (7.5" x 7.9" x 15.1")
Weight	9.8 kg (21.6 lbs)
Operating voltage	100 – 240 V, 50/60 Hz
Operating current	Less than 1.3 A
Operating environment	+10°C – +40°C, 30 – 90 RH%, 700 – 1060 hPa



DIGITAL IMAGING MADE EASY

Head Office and Factory:

SOREDEX

Nahkelantie 160, Tuusula
P.O. Box 148, FI-04301 Tuusula
Finland
Tel. +358 10 270 2000
Fax +358 9 701 5261
info@soredex.com

Subsidiary: SOREDEX USA

1245 W. Canal Street
Milwaukee, WI 53233 U.S.A
Tel. +1 800 235 8854
Fax +1 414 481 8665
info@soredexusa.com

Subsidiary: SOREDEX Germany

Schutterstrasse 12
77746 Schutterwald
Germany
Tel: +49 (0) 781 28 41 98 0
Fax: +49 (0) 781 28 41 98 30
kontakt@soredex.de

SOREDEX® designs, develops, manufactures and markets dental imaging systems, with an emphasis on innovative digital solutions. Operating worldwide, SOREDEX® offers quality imaging systems of true diagnostic value, based on an in-depth understanding of the dental practice. Applying three decades of experience of imaging excellence, we offer reliable and easy-to-use solutions that help you focus on patient care.

SOREDEX® digital imaging systems are innovative and accurate diagnostic tools that integrate seamlessly and easily into a dental practice, enhancing the imaging process and improving workflow. Our systems are designed to be simple and easy to use. They will make your dental practice more efficient and ultimately give you more time for your patients.

SOREDEX® stands for innovation and value in dental X-ray technology.

MINRAY®, CRANEX®, DIGORA® and SCANORA® are registered trademarks of SOREDEX, PaloDEX Group Oy. Other product names and trademarks are the property of their respective owners. CE marked (NB 0537). Electric safety according to IEC 60601-1. Manufacturing complies with ISO 13485:2003, ISO 9001:2000 and ISO 14001:2004.

SOREDEX® reserves the right to make changes to specifications and features shown herein at any time without notice or obligation. Contact your SOREDEX® representative for the most current information.

© 2009 SOREDEX®



204133-2 11/09 Printed in Finland



www.soredex.com • www.soredex.de • www.soredexusa.com