

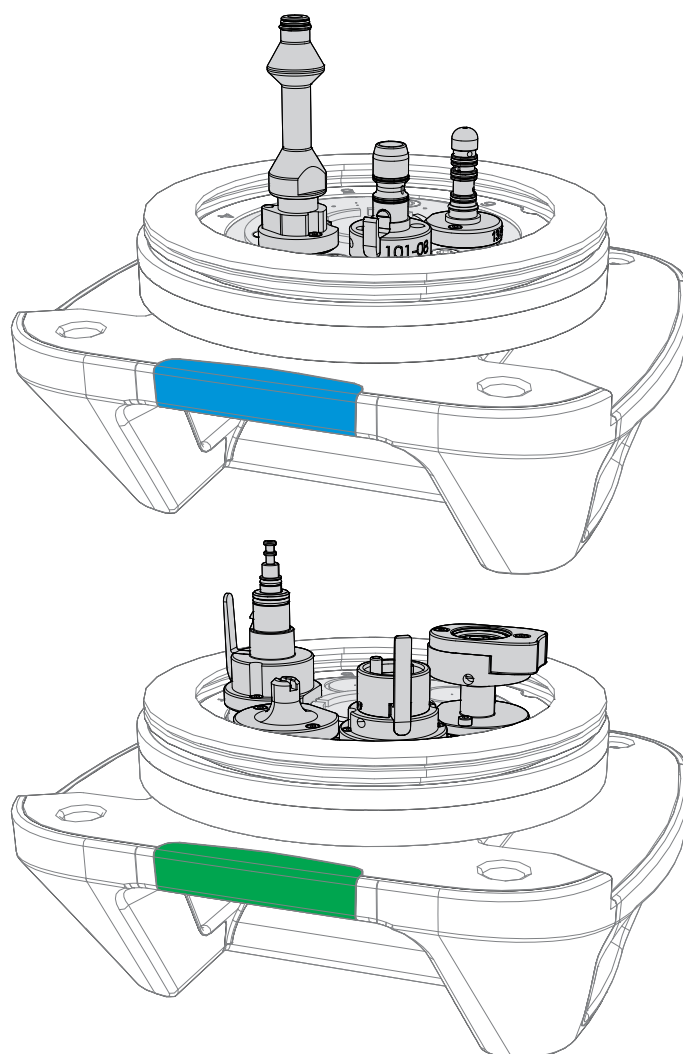
New as of: 04.2020

Adapters for DAC Universal

Touch / Touch S

Instructions for use

English



1 Dear Customer,

These operating instructions are only valid in combination with the operating instructions for the DAC Universal. In these operating instructions, you will find a complete overview of all available adapters, information on their installation, cleaning and maintenance as well as an overview of available spare parts.

It is important to observe all safety information of both operating instructions in order to prevent personal injury and material damage. For a safe use of the DAC Universal, please refer to the operating instructions of the DAC Universal. Please follow the instructions below for care and cleaning of the adapters.

Your DAC Universal team,

Index

1	Dear Customer,	2
2	General information	5
2.1	Contact information	5
2.2	General notes	5
2.3	Structure of the document.....	6
2.3.1	Identification of the danger levels	6
2.3.2	Formats and symbols used.....	6
3	General placement of instruments on the adapters	7
4	Overview of the individual adapters	9
4.1	Overview of the individual adapters of the Blue lid / Pink lid.....	9
4.2	Overview of the individual adapters of the Green lid / White lid.....	11
5	Mounting adapters	14
5.1	Mounting adapters on the Blue lid / Pink lid.....	14
5.2	Mounting adapters on the Green lid / White lid.....	16
6	The placement of the instruments	18
6.1	Attaching instruments to the respective Blue lid / Pink lid adapters.....	18
6.1.1	Bien-Air Unifix adapter	18
6.1.2	Castellini adapter	19
6.1.3	Borden 2/3-hole adapter	19
6.1.4	Midwest 4/5-hole adapter.....	20
6.1.5	KaVo MULTIflex adapter.....	20
6.1.6	Morita PAR-DI adapter.....	21
6.1.7	Morita CP4 adapter.....	22
6.1.8	NSK QD adapter	23
6.1.9	Osada OFJ-MZL adapter	24
6.1.10	Dentsply Sirona Quick Coupling adapter	24
6.1.11	W&H Roto Quick adapter.....	25
6.1.12	Yoshida adapter.....	26
6.1.13	NSK Phatelus adapter	27
6.1.14	ISO/INTRAmatic & OSADA HL-C adapter.....	27
6.1.15	KaVo/Bien-Air contra-angle handpiece head adapter.....	28
6.1.16	Dentsply Sirona TE/Classic Adapter Touch.....	28

6.2	Attaching instruments to the respective Green lid / White lid adapters.....	29
6.2.1	Sirona ultrasonic tips adapter	29
6.2.2	EMS ultrasonic tips adapter	30
6.2.3	Satelec ultrasonic tips adapter	31
6.2.4	KaVo SONICflex 2003 ultrasonic tip adapter	31
6.2.5	Sirona ultrasonic handpiece adapter	32
6.2.5.1	Sirona SiroSonic / L adapter	32
6.2.5.2	Sirona SiroSonic TL / PerioSonic adapter	32
6.2.6	EMS Piezon handpiece adapter	33
6.2.7	EMS ultrasonic handpiece adapter	33
6.2.8	Satelec ultrasonic handpiece adapter	34
6.2.8.1	Satelec Slim handpiece adapter	34
6.2.8.2	Satelec Newtron handpiece adapter	34
6.2.8.3	Satelec Newtron LED handpiece adapter	35
6.2.9	KaVo SONICflex handpiece adapter	35
6.2.10	EMS AIR-FLOW® handy nozzle adapter	36
6.2.11	EMS AIRFLOW® nozzle adapter	37
6.2.12	Sirona adapters for attachment of multifunctional syringes	38
6.2.12.1	Sirona Sprayvit nozzle adapter	38
6.2.12.2	Sirona Sprayvit nozzle 4000 adapter	38
7	Cleaning and maintenance	39
7.1	Checking the adapters and the respective O-rings	39
7.2	Changing the external O-rings on the adapters	39
7.2.1	Changing the external O-rings on the EMS AIRFLOW® nozzle adapter	40
7.3	Checking the functionality of the lids	40
8	List of spare parts for maintenance of adapters	41
8.1	Overview of adapters for the Blue lid / Pink lid with the corresponding O-rings	41
8.1.1	Overview of current O-rings for current revisions of adapters	42
8.1.2	Overview of O-rings of discontinued adapters	46
8.1.3	Overview of o-rings for old revisions of adapters still available	48
8.2	Overview of adapters for the Green lid / White lid with the corresponding O-rings	49

2 General information

2.1 Contact information

Customer service center

For technical questions you can call our Customer Service Center at:
+49 (0)6251/16-1670

Manufacturer

Sirona Dental Systems GmbH
Fabrikstraße 31
64625 Bensheim
Germany
www.dentsplysirona.com

2.2 General notes

Keep documents safe

Always keep the instructions for use handy in case you or another user require(s) information at a later point of time. If possible, save the instructions for use on the PC or print them out.

If you sell the unit, make sure that the instructions for use are included with it either as a hard copy or on an electronic storage device so that the new owner can familiarize himself with its functions and the specified warning and safety information.

Online portal for technical documents

We have set up an online portal for the technical documents at **dentsplysirona.com/ifu**. From here, you can download these instructions for use along with other documents. Please complete the online form if you would like a hard copy of a particular document. We would be delighted to send you a printed copy, free of charge.


Help


If you reach an impasse despite having thoroughly studied the instructions for use, please contact your dental depot.


2.3 Structure of the document

2.3.1 Identification of the danger levels

To prevent personal injury and material damage, please observe the warning and safety information provided in these instructions for use. Such information is highlighted as follows:

 DANGER
An imminent danger that could result in serious bodily injury or death.

 WARNING
A possibly dangerous situation that could result in serious bodily injury or death.

 CAUTION
A possibly dangerous situation that could result in slight bodily injury.

NOTE
A possibly harmful situation which could lead to damage of the product or an object in its environment.

IMPORTANT
Application instructions and other important information.

Tip: Information for simplifying work.

2.3.2 Formats and symbols used

The formats and symbols used in this document have the following meaning:

<ul style="list-style-type: none"> ✓ Prerequisite 1. First action step 2. Second action step or ➤ Alternative action ⇒ Result ➤ Individual action step 	Requests you to do something.
See "Formats and symbols used [→ 6]"	Identifies a reference to another text passage and specifies its page number.
• List	Designates a list.
"Command / menu item"	Indicates commands / menu items or quotations.

3 General placement of instruments on the adapters

WARNING

Risk of contamination!

If instruments are attached to an unsuitable adapter or if instruments are damaged, cleaning and disinfection/sterilization may fail. In this case, reprocessing of the instruments must be repeated.

NOTE

All instruments must be placed straight onto the respective adapter to prevent damage to the O-rings.

NOTE

The instruments must be easy to attach to the adapters. If the instrument does not attach to the adapter easily, it can be damaged. The manufacturer does not accept responsibility for instruments that are damaged due to being subjected to force.

NOTE

Make sure that the maximum permissible height of the instruments is not exceeded, see "Mounting adapters [→ 14]".

NOTE

Instruments are damaged by inadequate lubrication.

IMPORTANT

If the DAC Universal is started with fewer than 6 instruments placed in the lid, the lubrication function is not deactivated at the empty positions. To prevent oily instruments, we recommend placing instruments in all 6 positions of the lid.

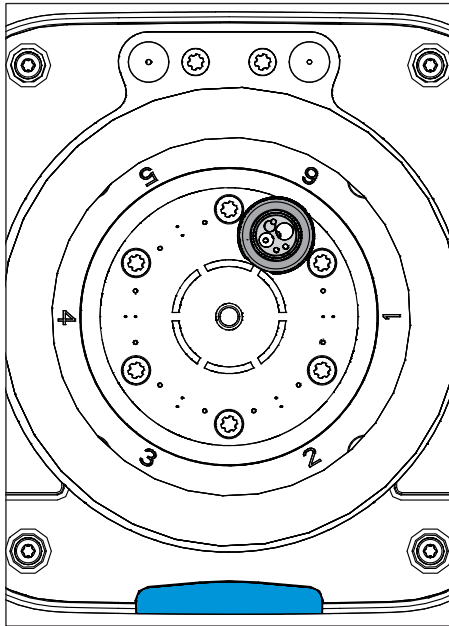
General attachment

Place the instruments on their respective adapters of the corresponding lid.

Depending on the instrument and the kind of adapter, you must press or click the instrument onto the adapter, activate a snap lock on the adapter, tighten a threaded ring on the instrument or screw the instrument onto the adapter.

Please make sure that you hear a slight "click" when you place the instrument on the adapter.

Pull lightly on the instrument to ensure that it is firmly attached to the adapter.



General placement

NOTE

The adapters:

- Midwest 4/5-hole adapter
- Morita CP4 adapter
- NSK QD adapter
- W&H Roto Quick adapter
- Yoshida adapter

are to be placed in position 6 (see image) as this allows the Blue lid / Pink lid to be inserted more easily in the DAC Universal

See "The placement of the instruments [→ 18]" for detailed instructions on the individual adapters.

4 Overview of the individual adapters

4.1 Overview of the individual adapters of the Blue lid / Pink lid

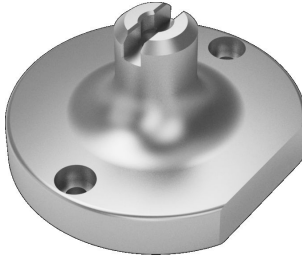


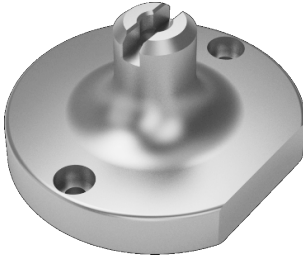
Not available in all countries.

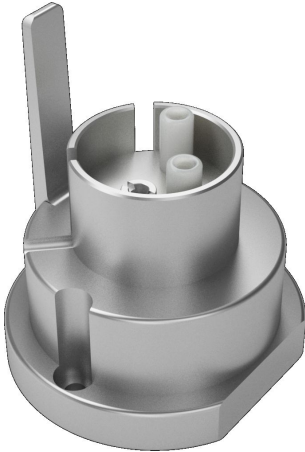

Adapters for turbines			
<p>Bien-Air Unifix adapter 6051713</p> 	<p>Castellini adapter 6051762</p> 	<p>Borden 2/3-hole adapter 6051861</p> 	<p>Midwest 4/5-hole adapter 6051853</p> 
<p>KaVo MULTIflex adapter 6051655</p> 	<p>Morita PAR-DI adapter (adapter Morita Alpha) 6051911</p> 	<p>Morita CP4 adapter 6051929</p> 	<p>NSK QD adapter 6051812</p> 

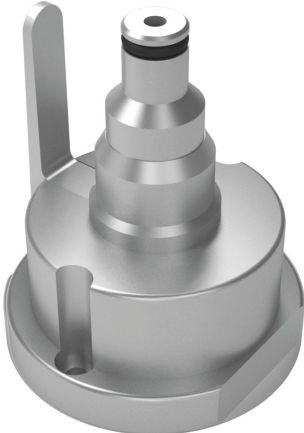

Adapters for turbines			
Osada OFJ-MZL adapter 6085745	Dentsply Sirona Quick Coupling adapter 6051697	W&H Roto Quick adapter 6051671	Yoshida adapter 6323831
			
NSK Phatelus adapter 6051804			
			

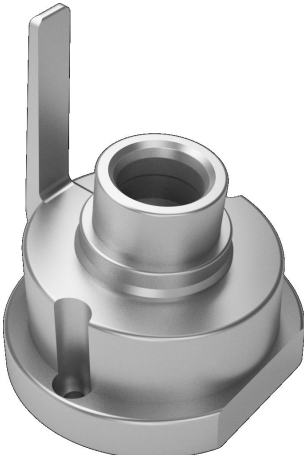
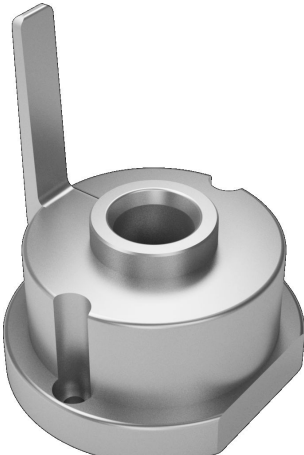
Straight / contra-angle handpiece adapters			
ISO/INTRAMatic & OSADA HL-C adapter 6051648	KaVo/Bien-Air contra- angle handpiece head adapter 6051663	Dentsply Sirona TE/Classic Adapter Touch 6686682	
			

4.2 Overview of the individual adapters of the Green lid / White lid

Adapters for ultrasonic/sonic tips			
Sirona ultrasonic tip adapter 6536127	EMS ultrasonic tips adapter 6610708	Satelec ultrasonic tips adapter 6610716	KaVo SONICflex 2003 ultrasonic tip adapter 6735539
			

Adapters for ultrasonic handpieces			
Sirona SiroSonic / L adapter 6536143	Sirona SiroSonic TL / PerioSonic adapter 6536135	EMS Piezon handpiece adapter 6613538	EMS ultrasonic handpiece adapter 6750090
			
Satelec Slim handpiece adapter 6623438	Satelec Newtron handpiece adapter 6623420	Satelec Newtron LED handpiece adapter 6623446	
			
Adapters for sonic handpieces			
KaVo SONICflex handpiece adapter 6732064			
			

Adapters for nozzles of powder jet devices and powder jet handpieces			
EMS AIR-FLOW® handy nozzle adapter 6623453	EMS AIRFLOW® nozzle adapter 6623461		
			

Adapters for attachment of multifunctional syringes			
Sirona Sprayvit nozzle adapter 6536150	Sirona Sprayvit nozzle 4000 adapter 6536168		
			

5 Mounting adapters

Up to 6 rotating instruments, ultrasonic/sonic handpieces, ultrasonic/sonic tips, nozzles of multifunctional syringes and powder jet devices, and powder jet handpieces can be reprocessed simultaneously in the DAC Universal. The instruments are connected to the Blue lid / Pink lid or the Green lid / White lid using adapters. These adapters are not yet mounted when the unit is delivered.

The adapters must be mounted by a trained technician or user.

IMPORTANT

Adapt a maximum of 5 instruments without spray channels on the Blue lid. Six instruments without spray channels cannot be reprocessed on the Blue lid as the water which is needed for internal cleaning is then unable to flow out. Error 1506 is issued.

5.1 Mounting adapters on the Blue lid / Pink lid

Maximum length of the instruments

The six adapter positions on the Blue lid / Pink lid are each marked with numbers that correspond with the adapter position number.

The maximum length at lid position 4 is 145 mm / 5.70 inches (total length of instrument and adapter).

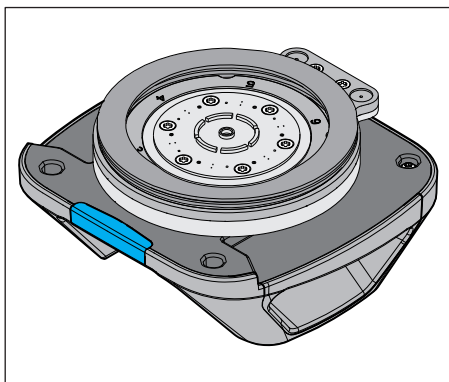
The maximum length at the other positions is 160 mm / 6.30 inches (total length of instrument and adapter).

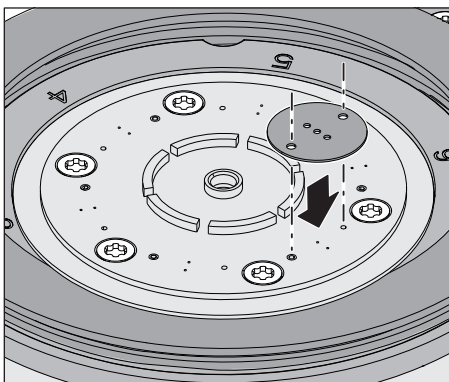
NOTE

Make sure that the maximum permissible height of the instruments is not exceeded.

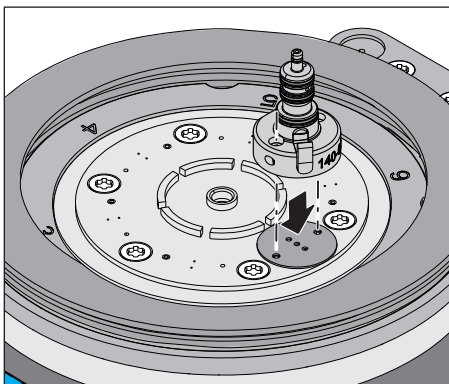
Fastening the adapter to the Blue lid / Pink lid

- ✓ The Blue lid / Pink lid and the 6 adapters are available.

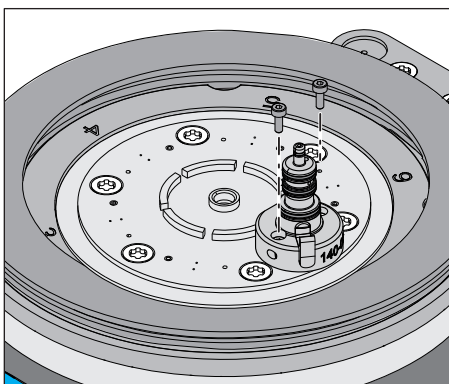




1. Place the gasket supplied on the Blue lid / Pink lid so the gasket matches the screw holes.



2. Place the adapter over the screw holes. Make sure that the flat side of the adapter base is turned towards the center (see image).



3. Tighten the screws using the 1.5 mm Allen key supplied.

IMPORTANT

When mounting the adapters it is important that all O-rings, gaskets and screws are new.

WARNING

Risk of contamination!

If the adapter gaskets are missing, this may lead to insufficient cleaning of the instruments.

5.2 Mounting adapters on the Green lid / White lid

A maximum of 3 ultrasonic tips from Sirona, EMS and/or Satelec can be positioned simultaneously on the Green lid / White lid.

The ultrasonic tip adapters cannot be positioned directly next to each other. Other Green lid / White lid adapters must be installed between the ultrasonic tip adapters.

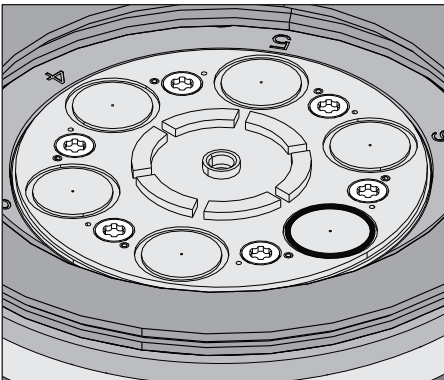
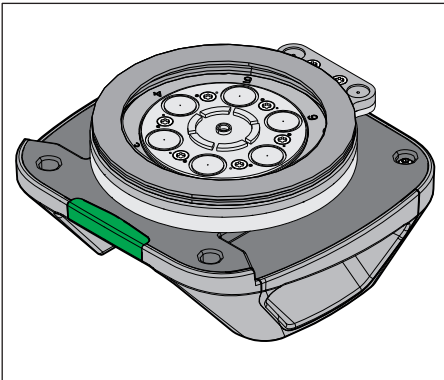
Install the adapters according to the requirements and instruments in the practice.

Fastening the adapter to the Green lid / White lid

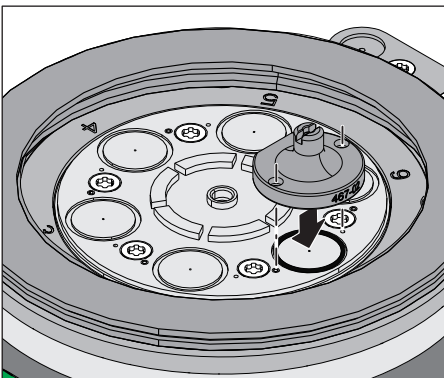
IMPORTANT

When mounting the adapters it is important that all O-rings and screws are new.

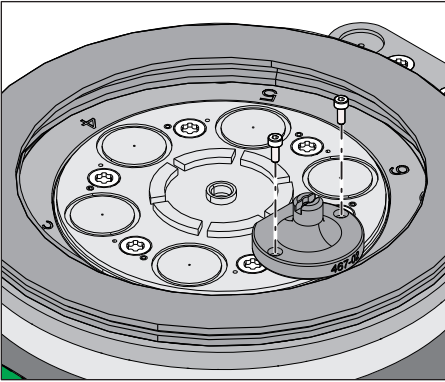
- ✓ The Green lid / White lid and the 6 adapters are available.



1. Place the O-rings on the Green lid / White lid in the corresponding grooves at each of the 6 adapter positions.



2. Place the adapter over the O-ring. The flat side of the adapter base is turned towards the center as shown.



3. Tighten the adapter with 2 screws using the 1.5 mm Allen key supplied.

6 The placement of the instruments

Follow the general safety information in "General placement of instruments on the adapters" when handling the adapters described here.

6.1 Attaching instruments to the respective Blue lid / Pink lid adapters

6.1.1 Bien-Air Unifix adapter

Attachment

1. Press the Bien-Air turbine onto the adapter until you hear and feel a slight click.
2. Pull lightly on the turbine to ensure that it is correctly attached to the adapter.

Removal

1. Press the small button at the bottom of the adapter and simultaneously detach the Bien-Air turbine.
2. Release the button.



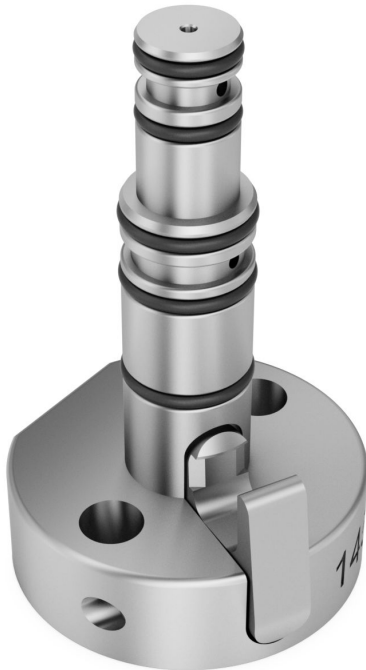
6.1.2 Castellini adapter

Attachment

1. Press the Castellini turbine onto the adapter until you hear and feel a slight click.
2. Pull lightly on the turbine to ensure that it is correctly attached to the adapter.

Removal

- Press the small level at the bottom of the adapter and simultaneously detach the Castellini turbine.



6.1.3 Borden 2/3-hole adapter

Attachment

1. Attach the Borden 2/3-hole turbine with fixed connection to the adapter. When attaching, make sure that the various tube diameters match.
2. Hold the turbine firmly and lift the threaded ring.
3. Then twist the ring counterclockwise to firmly attach the turbine.
4. Pull lightly on the turbine to ensure that it is correctly attached to the adapter.

Removal

1. Hold the turbine firmly and simultaneously twist the threaded ring clockwise to loosen it.
2. Detach the Borden 2/3-hole turbine with fixed connection from the adapter.



6.1.4 Midwest 4/5-hole adapter



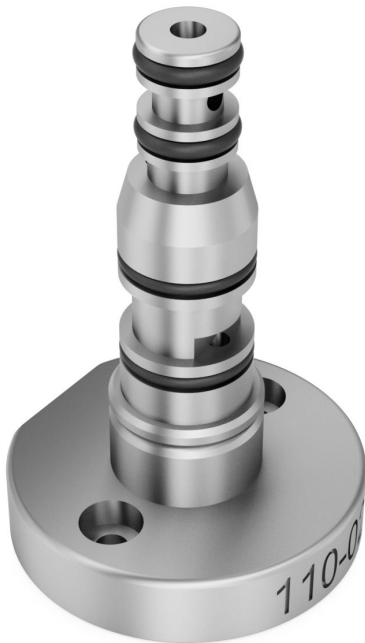
Attachment

1. Attach the Midwest/ISO 4/5-hole turbine with fixed connection to the adapter. When attaching, make sure that the various tube diameters match.
2. Press the handpiece down slightly while simultaneously twisting the threaded ring counterclockwise.
3. Pull lightly on the turbine to ensure that it is correctly attached to the adapter.

Removal

1. Hold the turbine firmly and simultaneously twist the threaded ring clockwise to loosen it.
2. Detach the Midwest/ISO 4/5-hole turbine with fixed connection from the adapter.

6.1.5 KaVo MULTIflex adapter



Attachment

1. Press the KaVo turbine onto the adapter until you hear and feel a slight click.
2. Pull lightly on the turbine to ensure that it is correctly attached to the adapter.

Removal

- Hold the lid of the DAC Universal firmly with one hand and simultaneously detach the KaVo turbine.

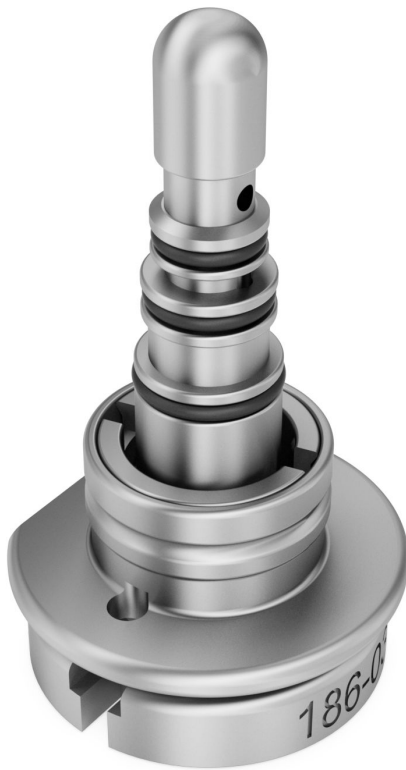
6.1.6 Morita PAR-DI adapter

Attachment

1. Press the ring at the bottom of the adapter down and attach the Morita high-speed handpiece onto the adapter as far as possible until you hear and feel a slight click.
2. Release the ring. Pull lightly on the turbine to ensure that it is correctly attached to the adapter.

Removal

1. Press the ring at the bottom of the adapter down and simultaneously detach the Morita turbine.
2. Release the ring.



6.1.7 Morita CP4 adapter

Attachment

1. Press the Morita turbine onto the adapter until you hear and feel a slight click.
2. Pull lightly on the turbine to ensure that it is correctly attached to the adapter.

Removal

1. Press the outer ring of the adapter down and simultaneously detach the Morita turbine.
2. Release the ring.



6.1.8 NSK QD adapter

Attachment

1. Press the NSK turbine onto the adapter until you hear and feel a slight click.
2. Pull lightly on the turbine to ensure that it is correctly attached to the adapter.

Removal

- Press the outer ring of the adapter down and simultaneously detach the NSK turbine.



6.1.9 Osada OFJ-MZL adapter

Attachment

1. Press the ring at the bottom of the adapter down and attach the Osada high-speed handpiece onto the adapter as far as possible until you hear and feel a slight click.
2. Release the ring.
3. Pull lightly on the turbine to ensure that it is correctly attached to the adapter.

Removal

1. Press the ring at the bottom of the adapter down and simultaneously detach the Osada turbine.
2. Release the ring.



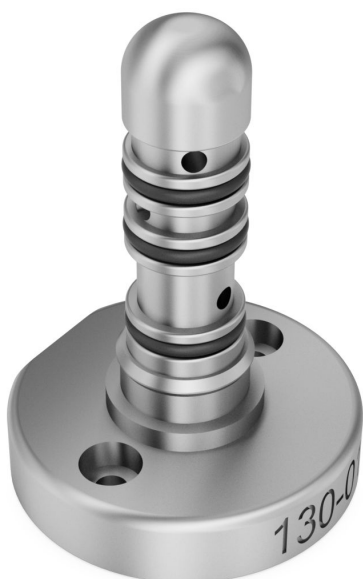
6.1.10 Dentsply Sirona Quick Coupling adapter

Attachment

1. Press the Dentsply Sirona turbine onto the adapter until you hear and feel a slight click.
2. Pull lightly on the turbine to ensure that it is correctly attached to the adapter.

Removal

- Hold the lid of the DAC Universal firmly with one hand and simultaneously detach the Dentsply Sirona turbine.



6.1.11 W&H Roto Quick adapter

Attachment

1. Press the W&H turbine onto the adapter until you hear and feel a slight click.
2. Pull lightly on the turbine to ensure that it is correctly attached to the adapter.

Removal

1. Press the outer ring of the adapter down and simultaneously detach the W&H turbine.
2. Release the ring.



6.1.12 Yoshida adapter

Attachment

1. Press the Yoshida turbine onto the adapter until you hear and feel a slight click.
2. Pull lightly on the turbine to ensure that it is correctly attached to the adapter.

Removal

- Press and hold the outer ring of the adapter down and detach the Yoshida turbine.



6.1.13 NSK Phatelus adapter



Attachment:

1. Press the NSK turbine onto the adapter until you hear and feel a slight click.
2. Pull lightly on the turbine to ensure that it is correctly attached to the adapter.

Removal:

- Press the outer ring of the adapter down and simultaneously detach the NSK turbine.

6.1.14 ISO/INTRAmatic & OSADA HL-C adapter

The ISO/INTRAmatic adapter has been shortened to also accommodate shorter instruments and the Osada HL-C.

Attachment

1. Press the straight or contra-angle handpiece onto the adapter until you hear and feel a slight click.
2. Pull lightly on the straight or contra-angle handpiece to ensure that it is correctly attached to the adapter.

Removal

1. Press the small lever at the bottom of the adapter and simultaneously detach the straight or contra-angle handpiece.
2. Release the lever.



IMPORTANT

When using a straight or contra-angle handpiece with an exchangeable head, the head must be reprocessed separately. To reprocess the head use the contra-angle handpiece head adapter, see "KaVo/Bien-Air contra-angle handpiece head adapter [→ 28]". The instrument (without head) is reprocessed on the ISO/INTRAmatic adapter.

6.1.15 KaVo/Bien-Air contra-angle handpiece head adapter

For reprocessing KaVo, Bien-Air, and Osada instruments with removable heads.

Attachment

1. Remove the contra-angle handpiece head by twisting the ring on the handpiece clockwise while pulling the head out.
2. Then press the contra-angle handpiece onto the adapter until you hear and feel a slight click. When attaching it, make sure the two lugs at the sides of the contra-angle handpiece head click into the groove on the adapter.

Removal

- > Hold the lid of the DAC Universal firmly with one hand and simultaneously detach the contra-angle handpiece head.



IMPORTANT

To reprocess the instrument without the head use the ISO/INTRAmatic adapter, see "ISO/INTRAmatic & OSADA HL-C adapter [→ 27]".

6.1.16 Dentsply Sirona TE/Classic Adapter Touch

Attachment

1. Attach the Dentsply Sirona TE/Classic straight or contra-angle handpiece to the adapter. Make sure to align the tube diameters when inserting it.
2. Press the straight or contra-angle handpiece onto the adapter until you hear and feel a slight click.
3. Pull lightly on the straight or contra-angle handpiece to ensure that it is correctly attached to the adapter.

Removal

- > Hold the lid of the DAC Universal firmly with one hand and detach the Dentsply Sirona TE/Classic straight or contra-angle handpiece.



6.2 Attaching instruments to the respective Green lid / White lid adapters

The following instruments can be reprocessed on the Green lid / White lid:

- Dental sonic handpieces and air scalers
- Dental ultrasonic handpieces
- Tips for dental sonic handpieces and air scalers including the associated (torque) wrenches
- Dental ultrasonic tips including the associated (torque) wrenches
- Nozzles for multifunctional syringes
- Nozzles for powder jet devices
- Powder jet handpieces

The number and placement of the different adapters is optional.

NOTE

The DAC Universal is not intended to reprocess Implant tips and tips for irrigation of prepared root canals.

Only tips that are listed in the Compatibility list (under www.dentsplysirona.com/instruments/flex-lid-compatibility) may be reprocessed on the DAC Universal.

NOTE

The DAC Universal is not intended to reprocess ultrasonic handpieces of type SIROSON / L and SIROSON S.

If you want to know whether your ultrasonic handpieces, ultrasonic tips, air scaler handpieces, air scaler tips, nozzles for multifunctional syringes and powder jet devices or powder jet handpieces can be reprocessed on the Green lid, please enter following link in your browser:
www.dentsplysirona.com/instruments/flex-lid-compatibility.

6.2.1 Sirona ultrasonic tips adapter

Unscrewing of ultrasonic tips

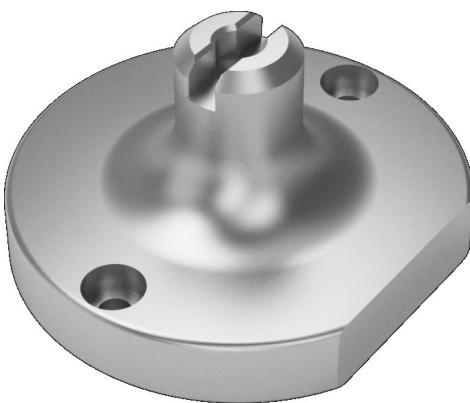
- Unscrew the ultrasonic tip from the ultrasonic handpiece with the torque wrench.

IMPORTANT

The ultrasonic tip has to remain in the torque wrench during reprocessing.

Attaching ultrasonic tips to the adapter

- Use the torque wrench to screw the ultrasonic tip securely onto the adapter. The procedure is similar to screwing the ultrasonic tip onto the ultrasonic handpiece.



IMPORTANT

The torque wrench has to be placed straight onto the adapter so the torque wrench does not collide with other instruments or torque wrenches.

IMPORTANT

The torque wrench must be firmly attached to the adapter, as when attaching an instrument.

Removing the ultrasonic tip from the lid

- > Unscrew the ultrasonic tip with the attached torque wrench.

6.2.2 EMS ultrasonic tips adapter

Unscrewing of ultrasonic tips

- > Unscrew the ultrasonic tip from the ultrasonic handpiece with the torque wrench.



IMPORTANT

The ultrasonic tip has to remain in the torque wrench during reprocessing.

Attaching ultrasonic tips to the adapter

- > Use the torque wrench to screw the ultrasonic tip securely onto the adapter. The procedure is similar to screwing the ultrasonic tip onto the ultrasonic handpiece.

IMPORTANT

The torque wrench has to be placed straight onto the adapter so the torque wrench does not collide with other instruments or torque wrenches.

IMPORTANT

The torque wrench must be firmly attached to the adapter, as when attaching an instrument.

Removing the ultrasonic tip from the lid

- > Unscrew the ultrasonic tip with the attached torque wrench.

6.2.3 Satelec ultrasonic tips adapter



Unscrewing of ultrasonic tips

- > Unscrew the ultrasonic tip from the ultrasonic handpiece with the torque wrench.

IMPORTANT

The ultrasonic tip has to remain in the torque wrench during reprocessing.

Attaching ultrasonic tips to the adapter

- > Use the torque wrench to screw the ultrasonic tip securely onto the adapter. The procedure is similar to screwing the ultrasonic tip onto the ultrasonic handpiece.

IMPORTANT

The torque wrench has to be placed straight onto the adapter so the torque wrench does not collide with other instruments or torque wrenches.

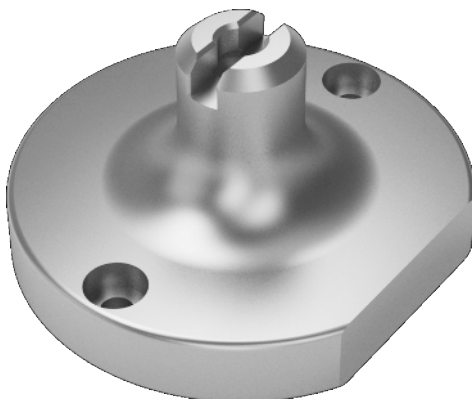
IMPORTANT

The torque wrench must be firmly attached to the adapter, as when attaching an instrument.

Removing the ultrasonic tip from the lid

- > Unscrew the ultrasonic tip with the attached torque wrench.

6.2.4 KaVo SONICflex 2003 ultrasonic tip adapter



Unscrewing of ultrasonic tips

- > Unscrew the ultrasonic tip from the ultrasonic handpiece with the torque wrench.

IMPORTANT

The ultrasonic tip has to remain in the torque wrench during reprocessing.

Attaching ultrasonic tips to the adapter

- > Use the torque wrench to screw the ultrasonic tip securely onto the adapter. The procedure is similar to screwing the ultrasonic tip onto the ultrasonic handpiece.

IMPORTANT

The torque wrench has to be placed straight onto the adapter so the torque wrench does not collide with other instruments or torque wrenches.

IMPORTANT

The torque wrench must be firmly attached to the adapter, as when attaching an instrument.

Removing the ultrasonic tip from the lid

- Unscrew the ultrasonic tip with the attached torque wrench.

6.2.5 Sirona ultrasonic handpiece adapter

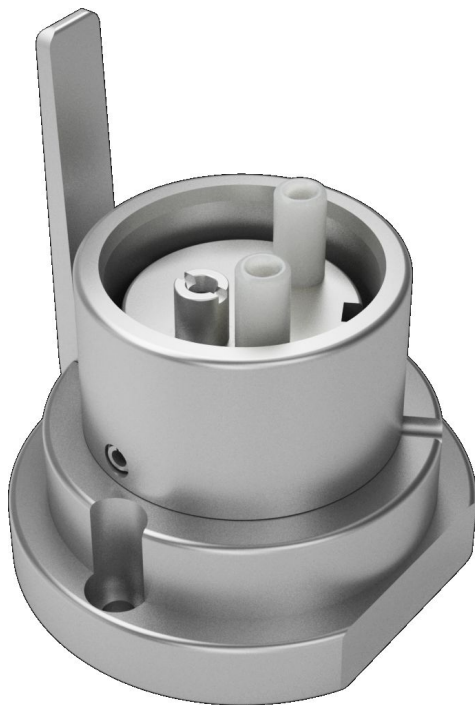
6.2.5.1 Sirona SiroSonic / L adapter

Attachment

1. Press the Dentsply Sirona SiroSonic / L handpiece onto the adapter until you hear and feel a slight click.
2. Pull lightly on the Dentsply Sirona SiroSonic / L handpiece to ensure that it is correctly attached to the adapter.

Removal

- Press the lever on the side of the adapter while you simultaneously detach the Dentsply Sirona SiroSonic / L handpiece.



6.2.5.2 Sirona SiroSonic TL / PerioSonic adapter

Attachment

IMPORTANT

Before reprocessing of the Dentsply Sirona SiroSonic TL handpiece, unscrew the cap.

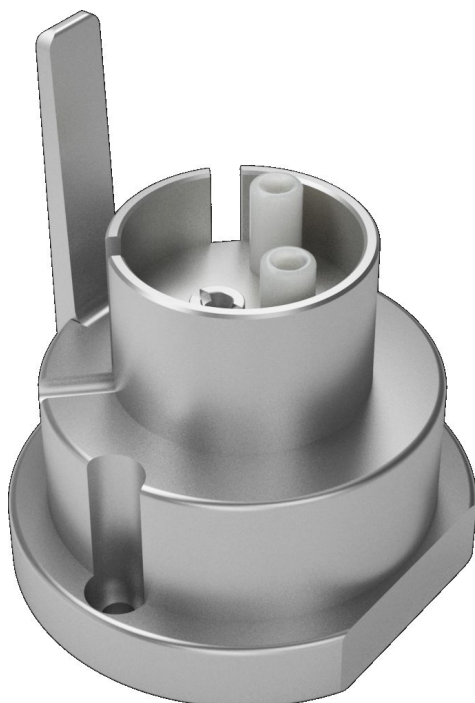
Before reprocessing of the Dentsply Sirona PerioSonic handpiece, unscrew the cap and the light guide.

Reprocessing of the cap and the signal ring must be carried out according to the manufacturer's instructions.

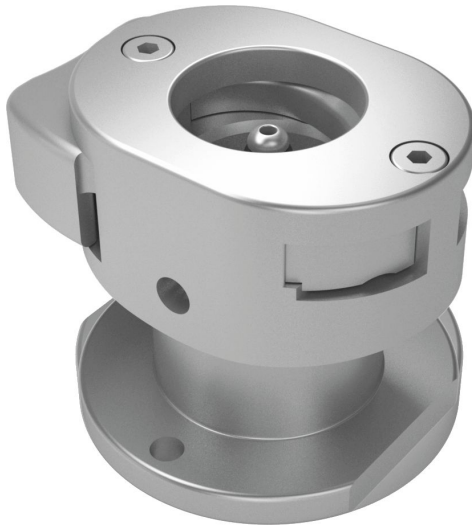
1. Press the Dentsply Sirona SiroSonic TL / PerioSonic handpiece onto the adapter, until you hear and feel a slight click.
2. Pull lightly on the Dentsply Sirona SiroSonic TL / PerioSonic handpiece to ensure that it is correctly attached to the adapter.

Removal

- Press the lever on the side of the adapter while you simultaneously detach the Dentsply Sirona SiroSonic TL / PerioSonic handpiece.



6.2.6 EMS Piezon handpiece adapter



Attachment

IMPORTANT

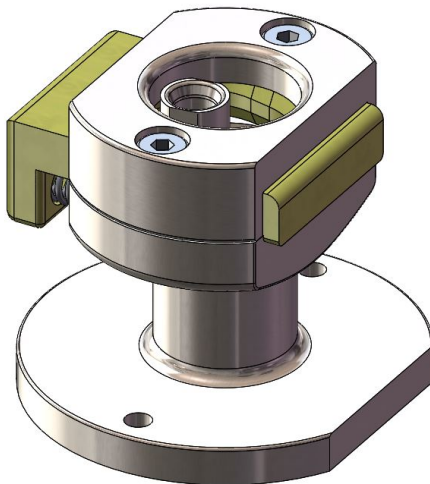
Before reprocessing of the ultrasonic handpiece, unscrew the cap, the O-ring and the light guide (if equipped).
Reprocessing of the cap, the O-ring and the light guide (if equipped) must be carried out according to the manufacturer's instructions.

1. Press the button on the side of the adapter and simultaneously press the ultrasonic handpiece onto the adapter, until you hear and feel a slight click.
2. Pull lightly on the ultrasonic handpiece to ensure that it is correctly attached to the adapter.

Removal

- > Press the button on the side of the adapter while you simultaneously detach the ultrasonic handpiece.

6.2.7 EMS ultrasonic handpiece adapter



Attachment

IMPORTANT

Before reprocessing of the ultrasonic handpiece, unscrew the cap, the O-ring and the light guide (if equipped).
Reprocessing of the cap, the O-ring and the light guide (if equipped) must be carried out according to the manufacturer's instructions.

1. Press the button on the side of the adapter and simultaneously press the ultrasonic handpiece onto the adapter, until you hear and feel a slight click.
2. Pull lightly on the ultrasonic handpiece to ensure that it is correctly attached to the adapter.

Removal

- > Press the button on the side of the adapter while simultaneously detaching the ultrasonic handpiece.

6.2.8 Satelec ultrasonic handpiece adapter

6.2.8.1 Satelec Slim handpiece adapter



Attachment

IMPORTANT

Before reprocessing of the ultrasonic handpiece, unscrew the cap, the light guide and the LED ring.

Reprocessing of the cap, the light guide and the LED ring must be carried out according to the manufacturer's instructions.

1. Press the button on the side of the adapter and simultaneously press the ultrasonic handpiece onto the adapter, until you hear and feel a slight click.
2. Pull lightly on the ultrasonic handpiece to ensure that it is correctly attached to the adapter.

Removal

- > Press the button on the side of the adapter while you simultaneously detach the ultrasonic handpiece.

6.2.8.2 Satelec Newtron handpiece adapter



Attachment

IMPORTANT

Before reprocessing the ultrasonic handpiece, unscrew the cap. Reprocessing of the cap must be carried out according to the manufacturer's instructions.

1. Press the button on the side of the adapter and simultaneously press the ultrasonic handpiece onto the adapter, until you hear and feel a slight click.
2. Pull lightly on the ultrasonic handpiece to ensure that it is correctly attached to the adapter.

Removal

- > Press the button on the side of the adapter while you simultaneously detach the ultrasonic handpiece.

6.2.8.3 Satelec Newtron LED handpiece adapter



Attachment

IMPORTANT

Before reprocessing of the ultrasonic handpiece, unscrew the cap, the light guide and the LED ring.

Reprocessing of the cap, the light guide and the LED ring must be carried out according to the manufacturer's instructions.

After reprocessing, connect the LED ring to the ultrasonic handpiece and ensure that it is correctly positioned (align the "+" markings on the LED ring and handpiece body near the LED ring electrical contacts).

1. Press the button on the side of the adapter and simultaneously press the ultrasonic handpiece onto the adapter, until you hear and feel a slight click.
2. Pull lightly on the ultrasonic handpiece to ensure that it is correctly attached to the adapter.

Removal

- > Press the button on the side of the adapter while you simultaneously detach the ultrasonic handpiece.

6.2.9 KaVo SONICflex handpiece adapter

WARNING

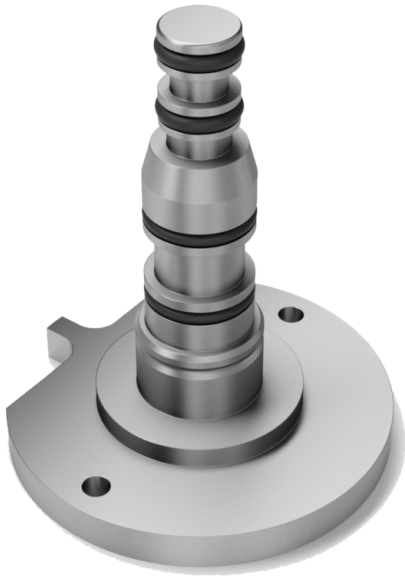
Risk of contamination!

The KaVo MULTIflex turbine must not be reprocessed on the KaVo SONICflex handpiece adapter on the Green lid / White lid as this could cause cleaning and disinfection/sterilization to fail.

WARNING

Risk of contamination!

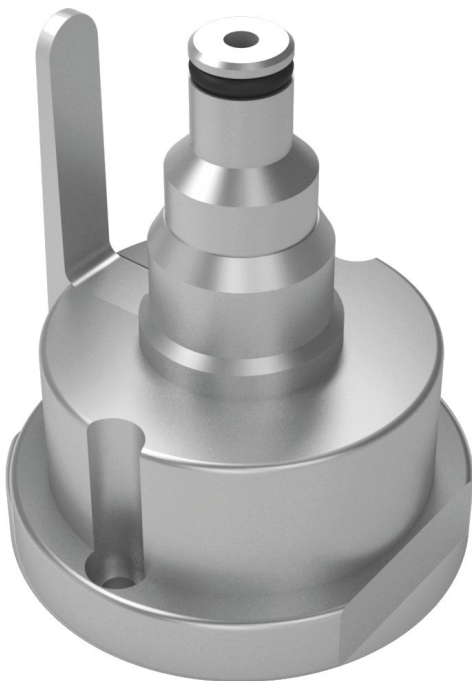
Only Sonicflex handpieces with Multiflex coupling can be reprocessed on the KaVo SONICflex handpiece adapter.

**Attachment**

1. Press the KaVo SONICflex handpiece onto the adapter until you hear and feel a slight click.
2. Pull lightly on the handpiece to ensure that it is correctly attached to the adapter.

Removal

- > Hold the lid of the DAC Universal firmly with one hand and simultaneously detach the KaVo SONICflex handpiece.

6.2.10 EMS AIR-FLOW® handy nozzle adapter**Attachment**

1. Press the AIR-FLOW® handy nozzle onto the adapter until you hear and feel a slight click.
2. Pull lightly on the AIR-FLOW® handy nozzle to ensure that it is correctly attached to the adapter.

Removal

- > Press the lever on the side of the adapter while you simultaneously detach the AIR-FLOW® handy nozzle.

6.2.11 EMS AIRFLOW® nozzle adapter



Attachment

1. Press the AIRFLOW® handpiece onto the adapter, while the lever on the side of the adapter is operated, until you hear and feel a slight click.
2. Pull lightly on the AIRFLOW® handpiece to ensure that it is correctly attached to the adapter.

NOTE

For correct fitting of the AIRFLOW® handpiece, please make sure that the O-rings on the adapter are not missing or damaged and that the beige cap is mounted correctly on the adapter.

Removal

- Press the lever on the side of the adapter while you simultaneously detach the AIRFLOW® handpiece.

6.2.12 Sirona adapters for attachment of multifunctional syringes

6.2.12.1 Sirona Sprayvit nozzle adapter

Attachment

1. Press the Sprayvit nozzle onto the adapter until you hear and feel a slight click.

NOTE

Risk of damage

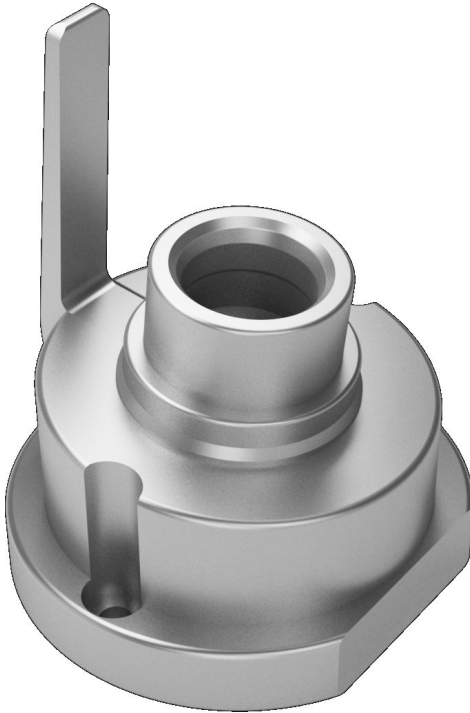
The Sprayvit nozzle is damaged when closing the lid.

- The Sprayvit nozzle must not be aligned outward (beyond the edge of the lid) when placing it on the adapter.

2. Pull lightly on the Sprayvit nozzle to ensure that it is correctly attached to the adapter.

Removal

- Press the lever on the side of the adapter while you simultaneously detach the Sprayvit nozzle.



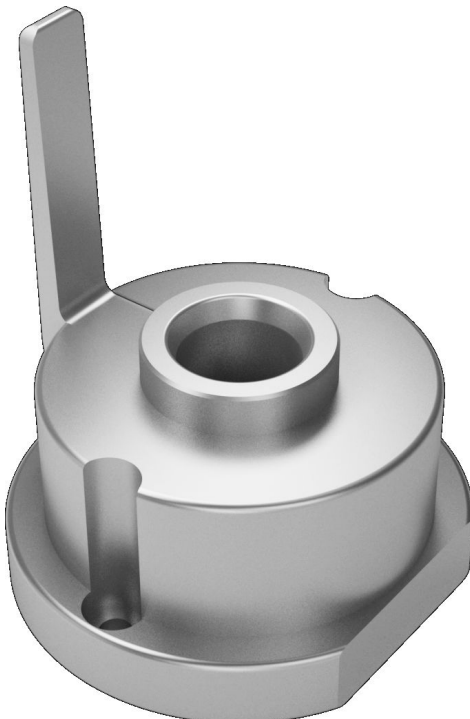
6.2.12.2 Sirona Sprayvit nozzle 4000 adapter

Attachment

1. Press the Sprayvit 4000 nozzle onto the adapter until you hear and feel a slight click.
2. Pull lightly on the Sprayvit 4000 nozzle to ensure that it is correctly attached to the adapter.

Removal

- Press the lever on the side of the adapter while you simultaneously detach the Sprayvit 4000 nozzle.



7 Cleaning and maintenance

7.1 Checking the adapters and the respective O-rings

Frequency: Weekly or every 50 cycles (whichever comes first).

CAUTION

Burning hazard!

The metal part of the lid is very hot at the end of the cycle. Please allow the lid to cool down before cleaning it.

IMPORTANT

O-rings have to be replaced every 3 months or every 600 cycles (whichever comes first).

If an O-ring is damaged or missing, replace it.

See "Changing the external O-rings on the adapters [→ 39]".

The O-rings must be checked and replaced by a trained user.

Checking adapters on the Blue lid / Green lid / Pink lid / White lid

- ✓ The Blue lid / Green lid / Pink lid / White lid is at hand and cooled down.
- 1. Place the lid on the counter.
- 2. Check the attachment of the adapters to the lid by pulling each adapter slightly.
- 3. If an adapter is loose, tighten the screws using the 1.5 mm Allen key supplied.
- 4. Repeat for all available Blue, Green, Pink or White lids.

7.2 Changing the external O-rings on the adapters

Frequency: Every 3 months or every 600 cycles (whichever comes first).

Some adapters also have internal / invisible O-rings that must be replaced by your service technician during servicing.

See "Overview of adapters for the Blue lid with the corresponding O-rings" or "Overview of adapters for the Green lid with the corresponding O-rings" for an overview of which adapters require which O-rings.

- ✓ The lid is at hand.
- 1. Remove the O-rings from the adapter using a dental probe or other instrument.
- 2. Slide the new O-rings into the grooves on the adapter.

WARNING

Risk of contamination!

If the O-rings are not placed onto the correct grooves on the adapter, the instruments and the O-rings may be damaged. Correct cleaning and disinfection/sterilization is not ensured.

7.2.1 Changing the external O-rings on the EMS AIRFLOW® nozzle adapter

Frequency: Every 3 months or every 600 cycles (whichever comes first).

- ✓ The lid is at hand.
- 1. Remove the beige cap from the adapter.
- 2. Remove the red rubber grommet from the adapter.
- 3. Remove the O-rings from the adapter using a dental probe or other instrument.
- 4. Slide the new O-rings carefully to the notches on the adapter.

WARNING

Risk of contamination!

If the O-rings are not placed onto the correct grooves on the adapter, the instruments and the O-rings may be damaged. Correct cleaning and disinfection/sterilization is not ensured.

- 5. Put the red rubber grommet back on the adapter.

IMPORTANT

If the rubber grommet is not placed chamfer-up on the adapter, the beige cap can not be mounted correctly on the rubber grommet.

- 6. Mount the beige cap on the rubber grommet.



7.3 Checking the functionality of the lids

Frequency: Weekly or every 50 cycles (whichever comes first).

To ensure that the adapters are positioned correctly on the lids, that none of the spray channels are blocked and there are no leaks, the functionality of the lids must be checked. To this end, read the instructions for use for the DAC Universal, in chapter "Cleaning, maintenance and validation", sub-chapter Check & Clean Process.

8 List of spare parts for maintenance of adapters



WARNING

Risk of contamination!

If the original adapter O-rings are not used, this may lead to insufficient cleaning of the instruments.

8.1 Overview of adapters for the Blue lid / Pink lid with the corresponding O-rings

This chapter contains:

- Current O-rings for current revisions of adapters, see 8.1.1
- O-rings for adapters that are no longer available, see 8.1.2
- O-rings for old revisions of adapters still available, see 8.1.3

In general, not all adapters or O-rings are available in all countries.



Adapters without O-rings are not listed in the following chapters.

8.1.1 Overview of current O-rings for current revisions of adapters

Adapters for turbines




REF	Adapter description	Image	Spare O-ring REF	Spare O-ring designation
6051713	Bien-Air Unifix adapter		6079839	O-ring L (10x)
			6079854	O-ring N (10x)
			6079854	O-ring N (10x)
			6094051	O-ring F (10x)
6051762	Castellini adapter		6352913	O-ring Z (10x)
			6352913	O-ring Z (10x)
			6079912	O-ring O (10x)
			6079912	O-ring O (10x)
			6079912	O-ring O (10x)
6051853	Midwest 4/5-hole adapter		6079961*	O-ring R (10x)
			6079672*	O-ring G (10x)
			6079672*	O-ring G (10x)
6051655	KaVo MULTIflex adapter		6079698	O-ring H (10x)
			6079698	O-ring H (10x)
			6079748	O-ring I (10x)
			6079748	O-ring I (10x)
6051911	Morita PAR-DI adapter (adapter Morita Alpha)		6079979	O-ring S (10x)
			6079789	O-ring J (10x)
			6079854	O-ring N (10x)

REF	Adapter description	Image	Spare O-ring REF	Spare O-ring designation
6051929	Morita CP4 adapter		6352913	O-ring Z (10x)
			6347293	O-ring Y (10x)
			6347293	O-ring Y (10x)
			6347293	O-ring Y (10x)
6051812	NSK QD adapter		6587245	O-ring A (10x)
			6347319	O-ring B (10x)
			6587260	O-ring C (10x)
			6587252	O-ring D (10x)
			6587278*	O-ring E (10x)
			6094051*	O-ring F (10x)
6085745	Osada OFJ-MZL adapter		6542349	O-ring V (10x)
			6079912	O-ring O (10x)
			6079912	O-ring O (10x)
6051697	DentsplySirona Quick Coupling adapter		6079797	O-ring M (10x)
			6079797	O-ring M (10x)
			6079797	O-Ring M (10x)
6051671	W&H Roto Quick adapter		6079763	O-ring K (10x)
			6347319	O-ring B (10x)
			6347319	O-ring B (10x)
			6347293*	O-ring Y (10x)

REF	Adapter description	Image	Spare O-ring REF	Spare O-ring designation
6323831	Yoshida adapter		6079797	O-ring M (10x)
			6079797	O-ring M (10x)
			6079797	O-ring M (10x)
			6454065*	O-ring U (10x)
			6454040*	O-ring T (10x)
6051804	NSK Phatelus adapter		6079938*	O-ring P (10x)
			6079938*	O-ring P (10x)

* Internal O-rings on adapters may be replaced only by qualified service technicians

Straight / contra-angle handpiece adapters



REF	Adapter description	Image	Spare O-ring REF	Spare O-ring designation
6051648	ISO/INTRAmatic & OSADA HL-C adapter		6079672	O-ring G (10x)
			6079672	O-ring G (10x)
6051663	KaVo/Bien-Air contra-angle handpiece head adapter		6085547*	O-ring W (10x)
6686682	DentsplySirona TE/Classic Adapter Touch		6079938	O-ring P (10x)

* Internal O-rings on adapters may be replaced only by qualified service technicians

8.1.2 Overview of O-rings of discontinued adapters

The following adapters are no longer available:

REF	Adapter description	Image	Spare O-ring REF	Spare O-ring designation
6051846	Midwest 4/5-hole adapter		6079961*	O-ring R (10x)
			6079672*	O-ring G (10x)
			6079672*	O-ring G (10x)
6051879	Midwest XGT/Stylus adapter		6079979	O-ring S (10x)
			6079854	O-ring N (10x)
			6079854	O-ring N (10x)
			6094051	O-ring F (10x)
6051895	STAR Attachment adapter		6079672	O-ring G (10x)
6051903	Midwest adapter Rhino/Shorty		6079672	O-ring G (10x)
			6079672	O-ring G (10x)
6051945	Micro-Mega adapter		6085547	O-ring W (10x))
			6085547	O-ring W (10x)
			6079961	O-ring R (10x)
6308360	Osada G1 adapter		6079672	O-ring G (10x)
			6079672	O-ring G (10x)

REF	Adapter description	Image	Spare O-ring REF	Spare O-ring designation
6051929	Morita PAR-O adapter***		6352913	O-ring Z (10x)
			6079854	O-ring N (10x)
			6079854	O-ring N (10x)
			6079854	O-ring N (10x)
6051689	W&H-turbines adapter - US version		6079789	O-ring J (10x)
			6079789	O-ring J (10x)
			6079789	O-ring J (10x)
			6198118*	O-ring Y (10x)

* Internal O-rings on adapters may be replaced only by qualified service technicians




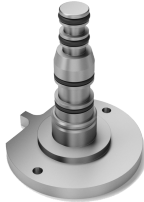
*** available until June 2011

8.1.3 Overview of o-rings for old revisions of adapters still available

REF	Adapter description	Engraved number on the adapter:	Spare O-ring REF	Spare O-ring designation
6051671	W&H Roto Quick adapter	120-04	6079763	O-ring K (10x)
		120-03	6347319	O-ring B (10x)
		120-02	6347319	O-ring B (10x)
			6347293*	O-ring Y (10x)
		120-01	6079763	O-ring K (10x)
			6079789	O-ring J (10x)
			6079789	O-ring J (10x)
			6079854*	O-ring N (10x)
6051812	NSK QD adapter	155-01	6587245	O-ring A (10x)
			6347319	O-ring B (10x)
			6587260	O-ring C (10x)
			6587252	O-ring D (10x)
			6587278*	O-ring E (10x)
			6094051*	O-ring F (10x)
		155-00	6079920	O-ring Q (10x)
			6079938	O-ring P (10x)
6085745	Osada OFJ-MZL adapter	189-03	6542349	O-ring V (10x)
			6079912	O-ring O (10x)
			6079912	O-ring O (10x)
		without engraving	6085547	O-ring W (10x)
		189-01	6079912	O-ring O (10x)
		189-02	6079912	O-ring O (10x)

* Internal O-rings on adapters may be replaced only by qualified service technicians

8.2 Overview of adapters for the Green lid / White lid with the corresponding O-rings

REF	Adapter description	Image	Spare O-ring REF	Spare O-ring designation
6613538	EMS Piezon handpiece adapter		6629930*	O-ring FA (10x)
6623453	EMS AIR-FLOW® handy nozzle adapter		6352913	O-ring Z (10x)
6623461	EMS AIRFLOW® nozzle adapter		6665793	Plastic cap (1x)
			6665769	Rubber grommet (2x)
			6665629	O-ring FC (10x)
			6665595	O-ring FB (10x)
6732064	KaVo SONICflex handpiece adapter		6079698	O-ring H (10x)
			6079698	O-ring H (10x)
			6079748	O-ring I (10x)
			6079748	O-ring I (10x)

We reserve the right to make any alterations which may be required due to technical improvements.

© Sirona Dental Systems GmbH
D3708.201.05.01.02 04.2020

Sprache: englisch
Ä.-Nr.: 000 000

Printed in Germany

Sirona Dental Systems GmbH



Fabrikstr. 31
64625 Bensheim
Germany
www.dentsplysirona.com

Order No **67 47 856 D3708**