

SDI | LUNA 2

UNIVERSAL COMPOSITE

BPA
FREE

SUPERIOR
STRENGTH &
AESTHETICS



CELEBRATING THE 50TH ANNIVERSARY OF SDI

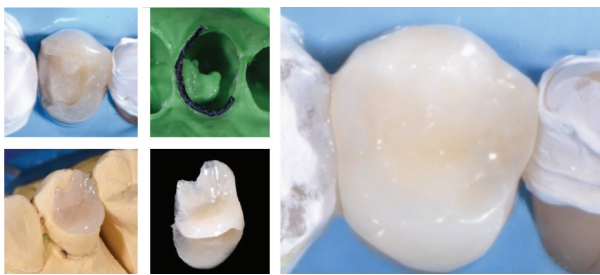


LUNA 2

Luna 2 is the next generation Luna universal composite. Luna 2 has an improved unique blend of fillers that were researched and developed at SDI to deliver the enhanced handling, very high radiopacity and reliable mechanical properties. Luna 2 is BPA free for health-conscious patients. Luna 2 makes placing a composite easier than ever.



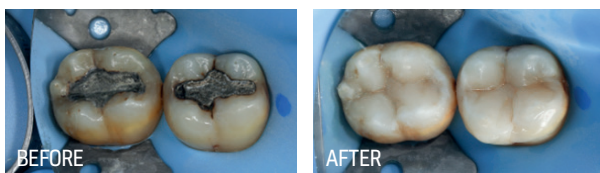
Images courtesy of Dr Neus Sancho Lecina - Spain



Indirect onlay with Luna 2. Images courtesy of Dr Giuseppe Lacona - Italy



Images courtesy of Prof Dr Marco Aurélio Chaves da Silva - Brazil



Images courtesy of Dr Michael Chan - Australia

» » "Handling is fantastic - much improved. It is SDI's best handling composite yet." « «

DR MICHAEL CHAN - AUSTRALIA



» » "For a new product to be accepted and incorporated into the dental practice, it must solve a problem (like simplifying shade selection) and be user friendly. You have a winner in LUNA 2!" « «

DR FAY GOLDSTEP - CANADA



» » "LUNA 2 is an extremely versatile composite, with excellent viscosity that ensures efficient handling and success in primary anatomy." « «

PROF DR LEONARDO UBALDO - BRAZIL



» » "LUNA 2 ticks all the boxes for me. It's easy to handle, it blends seamlessly and polishes to a nice shine." « «

DR BILL GERGIS - AUSTRALIA



» » "LUNA 2 is a great simplified and aesthetic approach to both anterior and posterior restorations." « «

DR SAM KOH - AUSTRALIA



» » "LUNA 2 is certainly the material that I want in my clinical routine and recommend to my students." « «

PROF DR CRISTIANE DE MELO ALENCAR - BRAZIL



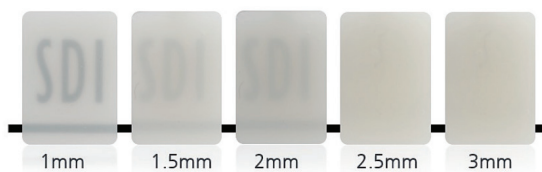
» » "LUNA 2 is spectacular!" « «

DR GIUSEPPE IACONA - ITALY



FASTER, MORE ACCURATE SHADE MATCHING

Luna 2 offers the innovative Logical Shade Matching Technology and Chameleon Effect for easier and precise shade selection. Shades were developed prioritising value [lightness], while pigments are arranged in a logically increasing way, for a simpler and faster match to the Vita Classical Shade Guide®. Patients will enjoy more accurate aesthetic results, including polishing and wear resistance for long lasting restorations.



Translucency in different thicknesses of Luna 2 shade A2



 Images courtesy of Dr Jiovanna Neri - Brazil



Scan the QR code for free download of the complete Luna 2 Translucency Clinical Guide and for more Luna 2 content.

HIGH COMPRESSIVE STRENGTH 360MPA

Most mastication forces are compressive in nature, making this an important mechanical property for posterior restorations to support the occlusal load without fracturing

HIGH FLEXURAL STRENGTH 130MPA

Luna 2 withstands masticatory forces in a similar way to dentine. This reduces failure risk either in areas of high stress, as Class V, or in less supported areas, such as cusp replacement or proximal boxes.

NATURAL TOOTH-LIKE PROPERTIES ACROSS ALL LIGHT

Luna 2 technology mimics the natural properties of teeth across all light sources. Your patients will enjoy lifelike translucency, opalescence, and fluorescence, with outstanding clinical performance.



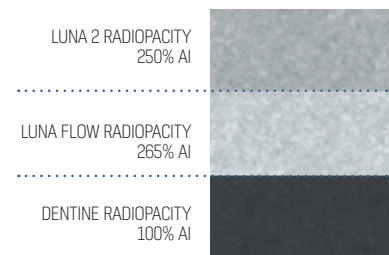
PERFECT CREAMY HANDLING

Luna 2's handling has been further improved. Luna 2 has non-stick, non-slump handling. Dentists conducting clinical trials of Luna 2 have praised its outstanding handling and ease of packing and sculpting.



RADIOPACITY 250% AL

With dentine/enamel at 100/170% Al radiopacity, Luna 2's outstanding radiopacity allows clear differentiation, providing easy and precise visualisation for diagnosis assistance.



Source: Internal test data



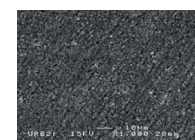
BPA FREE

Luna 2 is formulated without BPA derivatives, perfect for health-conscious patients.

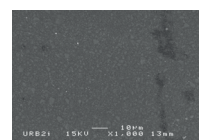


POLISHING FOR PERFECTION

The Luna 2 filler formulation is primed for excellent polishing results, wear resistance and longevity.



SEM before finishing and polishing



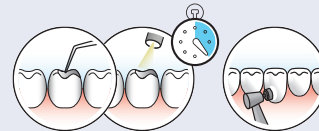
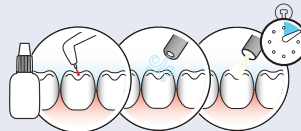
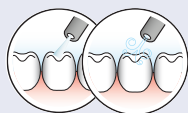
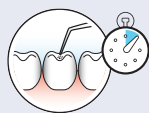
SEM after finishing and polishing

SOURCE: Independently tested by Unité de Recherches Biomatériaux Innovants et Interfaces (URB21-EA 4462 Paris Descartes).

Chairman: Dr Jean-Pierre Attal

INSTRUCTIONS

- 1 Etch tooth surface with Super Etch 37% phosphoric acid for 10 seconds
- 2 Wash thoroughly, remove excess water and keep moist
- 3 Apply Zipbond Universal Adhesive (SDI Limited) according to instructions, blow gently for 5 seconds and light-cure for 10 seconds
- 4 Place Luna 2 in increments of 2 mm or less. Light-cure each layer for 40 seconds (opaque shades) or for 20 seconds (remaining shades). Finish and polish with Polishing Paste (SDI Limited)



ORDER DETAILS



LUNA 2 INTRO KIT

| | |
|--|---------|
| Luna 2 Intro Kit with 5 syringes & Zipbond Universal | 8452025 |
| 5 x 4g Syringes | |
| (1 each - A1, A2, A3, A3.5, B1) | |
| 2 x 2mL Super Etch Gel Syringes | |
| 25 x Super Etch Disposable Tips | |
| 1 x 5mL Zipbond Universal | |
| 40 x Points, fine tip (white) | |
| 2 x mixing well - dual | |



LUNA 2 SYRINGE 4G REFILLS

| | |
|---|---------|
| Luna 2 Syr A1 - Vita® A1 | 8452001 |
| Luna 2 Syr A2 - Vita® A2 | 8452002 |
| Luna 2 Syr A3 - Vita® A3 | 8452003 |
| Luna 2 Syr A3.5 - Vita® A3.5 | 8452004 |
| Luna 2 Syr B1 - Vita® B1 | 8452006 |
| Luna 2 Syr B2 - Vita® B2 | 8452007 |
| Luna 2 Syr C2 - Vita® C2 | 8452010 |
| Luna 2 Syr Opaque OA2 - opaquer with A2 shade | 8452015 |
| Luna 2 Syr Opaque OA3 - opaquer with A3 shade | 8452016 |
| Luna 2 Syr I - Incisal: more translucent, equivalent to enamel | 8452018 |
| Luna 2 Syr XB - Extra Bleach shade: equivalent to 0M2 Vita® | 8452021 |
| Luna 2 Syr 2XB - 2x Extra Bleach shade: equivalent to 0M1 Vita® | 8452022 |



LUNA 2 COMPLET REFILLS (0.25G X 20 REFILLS; 5G TOTAL)

| | |
|--|---------|
| Luna 2 Comp A1 - Vita® A1 | 8452051 |
| Luna 2 Comp A2 - Vita® A2 | 8452052 |
| Luna 2 Comp A3 - Vita® A3 | 8452053 |
| Luna 2 Comp A3.5 - Vita® A3.5 | 8452054 |
| Luna 2 Comp B1 - Vita® B1 | 8452056 |
| Luna 2 Comp B2 - Vita® B2 | 8452057 |
| Luna 2 Comp C2 - Vita® C2 | 8452060 |
| Luna 2 Comp Opaque OA2 - opaquer with A2 shade | 8452065 |
| Luna 2 Comp Opaque OA3 - opaquer with A3 Shade | 8452066 |
| Luna 2 Comp I - Incisal: more translucent, equivalent to enamel | 8452068 |
| Luna 2 Comp XB - Extra Bleach shade: equivalent to 0M2 Vita® | 8452071 |
| Luna 2 Comp 2XB - 2x Extra Bleach shade: equivalent to 0M1 Vita® | 8452072 |



Economical Applicator



Premium Applicator

APPLICATORS

| | |
|-------------------------------|---------|
| Premium Complet Applicator | 5545022 |
| Economical Complet Applicator | 8100120 |

CLINICAL TIP: XB and 2XB Bleach shades are excellent for use in restorations after tooth whitening treatment with Pola (SDI Limited), and also on milky white teeth.



CLINICAL TIP: Luna 2 can be used with Zipbond Universal (SDI Limited) - a single component fluoride-releasing universal adhesive, with excellent handling and desensitizing effect.



VIEW A LUNA 2 RESTORATION

Scan the QR code below



LUNA 2 CURING TIME

40 sec - opaque shades
20 sec - remaining shades



LUNA 2 DEPTH OF CURE

2mm



YOUR SMILE. OUR VISION.



M100590 A

02-2022



MADE IN AUSTRALIA
by SDI Limited
Bayswater, Victoria 3153
Australia
www.sdi.com.au

AUSTRALIA 1800 337 003
AUSTRIA 00800 0225 5734
BRAZIL 0800 770 1735
FRANCE 00800 0225 5734
GERMANY 0800 100 5759

ITALY 00800 0225 5734
NEW ZEALAND 0800 808 855
SPAIN 00800 0225 5734
UNITED KINGDOM 00800 0225 5734
USA & CANADA 1 800 228 5166