



BRIX IS HERE

THE DENTAL R/EVOLUTION.

BRIX
MEDICAL SCIENCE

THE DENTAL R/EVOLUTION.



BRIX
IS HERE!



DR. MERCEDES RAMOS VERTIZ
Dental Director of
BRIX Medical Science
Argentina

Medicine today is full of innovations, new thinking, and new technologies. The topic of a healthy life is becoming more and more a holistic approach through all medical sectors. And dentistry is one of the leading. That's why we are happy to be at the forefront of this new global thinking with our product BRIX3000®.

Today we are working very successfully in Argentina, Brazil, and most of the Latin American countries. And last year we started to bring BRIX3000® and all our experience to dentists and patients in Europe, Africa, and Asia as well. We visited dental fairs and trade shows and found many new partners to bring the wave for better caries treatments to a new level.

But that's just the beginning — we will take the papain enzyme and its mechanism of dissolving defected cells and biological structures thanks to our patented E.B.E. technology that guarantees the highest enzyme concentration and will apply it in other great products. A revolutionary creme for better wound healing will join our product family soon.

Great times are ahead of us — and we are proud to walk the way together with our new partners and friends for a better future in dentistry and medicine.



➤ BRIX IS THE RESULT OF
NATURE'S BEST, PLUS
SCIENCE & INNOVATION.
MADE IN ARGENTINA,
FOR EVERYONE, ⏪
EVERYWHERE!

PAPAYA SEEDS

ANOTHER WONDER OF NATURE

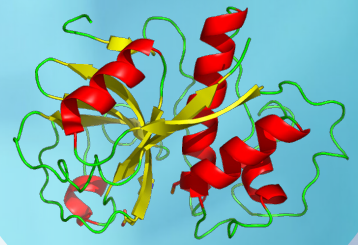
- *Heals liver cirrhosis*
- *Boosts kidney health*
- *Aids digestion*
- *Destroys internal parasites*
- *Contains the papain enzyme, the base for **BRIX3000®***



Most of the time when we eat papaya fruit, we trash the papaya seeds. But little do we know how beneficial they are and how they can prevent and cure a many ailments related to the liver, gut, intestinal worms, and even diseases like dengue. Here are some of the papaya seeds benefits: **1. HEALS LIVER CIRRHOSIS** Papaya seeds contain vital nutrients that help heal cirrhosis of the liver. Grind or crush 5–6 papaya seeds and have them with food or juice, especially lime juice. This should be done for 30 days. Moreover, eating small amounts of papaya seeds regularly helps in detoxing the liver and keeps liver diseases at bay. **2. KEEPS THE KIDNEYS HEALTHY** Researchers at the University of Karachi have found that papaya seeds can be used to improve kidney health and preventing renal failure. The same works wonders for kidney poisoning-related diseases. **3. REDUCES INFLAMMATION OF THE JOINTS** Papaya seeds are anti-inflammatory in nature, which makes them great for alleviating arthritis, joint disease, swelling, pain, and redness. **4. KILLS BACTERIA AND HEALS VIRAL INFECTIONS** A small amount of papaya seeds has been found to kill harmful bacteria like E. coli, Staphylococcus, and Salmonella. They also help fight viral infections and cure typhoid, dengue, and numerous other diseases. In Nigeria, papaya seeds mixed with milk is an excellent cure for typhoid fever. The seeds have been extensively used in Costa Rica to fight against dengue fever. The juice from papaya leaves can also help cure dengue by increasing platelet count. **5. AIDS DIGESTION** Both unripe papaya and papaya seeds are high in the enzyme papain. Papain is a beneficial aid to protein digestion but best avoided for pregnant women or those trying to conceive. **6. ARRESTS CANCER** Papaya seeds contain agents that stop the growth of cancer cells and tumors. They contain isothiocyanate which work well for colon, breast, lung, leukemia, and prostate cancer. **7. DESTROYS PARASITES IN THE INTESTINE** The seeds of papaya contain an alkaloid called carpaine that kills intestinal worms and amoeba parasites. The fruit also helps metabolize proteins and makes the gastrointestinal tract an extremely hostile place for parasites to live and thrive. Studies have shown that children in Nigeria have got rid of parasites in their gut 75% of the times by consuming papaya seed juice for 7 days.



THE ENZYME
PAPAIN



THE EBE TECHNOLOGY AND HOW BRIX WORKS

MEDICAL SCIENCE MADE IN ARGENTINA



The papain, BRIX3000® main component, is bio-encapsulated by using the innovative and exclusive "E.B.E. Technology" (Encapsulating Buffer Emulsion), which immobilizes the gel and confers its stability increasing the enzymatic activity of the product exponentially when being compared to the current technique.

This and other characteristics, added to the fact that its concentration is 3000 U/mg, make BRIX3000® a unique and innovative medical product in the world, created and patented worldwide by Brix SRL Argentina and Brix USA LLC. E.B.E. Technology® provides the gel with the optimum pH to immobilize the enzyme and free it at the moment of exerting proteolysis in collagen, increasing its enzyme activity by a 50% to 60%.

Therefore, the following is achieved: high proteolytic effectiveness on the necrotic tissue to remove the collagen fibers in the carious tissue, lower dissolution of the active principle by oral fluids, greater resistance to storage even in unfavorable conditions without requiring cold-chain preservation, and greater

antibacterial and anti-fungal potency with a greater and powerful antiseptic effect on tissue.

Additionally, BRIX3000® is an innocuous gel, 100% devoid of toxicity, which means it does not cause any type of reactions when it comes into contact with healthy tissue: tongue, gums, healthy dentin, skin-not even when ingested. BRIX3000® does not cause irritation or sensibility due to the selective action of the gel, i.e., it only acts on necrotic tissue and loses its enzymatic capacity when it comes into contact with healthy tissue.

During a long period of research, we studied the behavior of BRIX3000® in 2, 163 patients whose ages ranged from 6 to 17 and from 35 to 70 with diverse types of caries and evolution of the infectious process. After this study and the monitoring of the patients treated for a period of time, we can state that 98% of them stated they had not suffered any pain during treatment and, when the dental pieces were exposed to the caries detector, none of them showed a positive result, i.e., caries had been removed completely.

A male dentist with grey hair and glasses, wearing light blue scrubs and green gloves, is seated and talking to a female patient. He is holding a small blue and white dental device in his gloved hand. The patient, with long red hair and glasses, is seated in a green dental chair, facing the dentist. The background is a bright, clean dental office.

***BRIX IS THE BEST CARIES
TREATMENT WITH THE
LEAST RISKS AND
NO PAIN.***

THE BIO-MECHANICAL-CARIES-REMOVAL

HOW TO USE BRIX




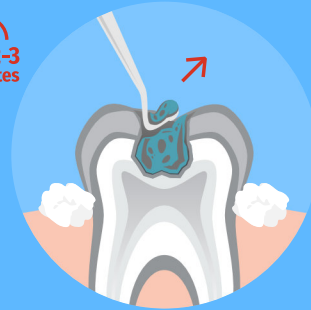
1.

Prepare and isolate the treatment area for a regular procedure, and if necessary, enlarge the diameter of the cavity with manual or rotary instruments to get an expulsive cavity. In case of large lesions, you can apply BRIX3000® directly.



2.

Apply BRIX3000® with a blunt spoon allowing the  to work for about **2-3 minutes**. Avoid water getting into the cavity, it could thin down the gel and prolong the process.



3.

Remove the material with a blunt spoon with pendulum movement and without pressure. If necessary, repeat the procedure to get to healthy dentin. Confirm the presence of healthy dentin with caries explorer and detector.



4.

Apply the suitable filling as for a regular procedure. You can apply BRIX3000® simultaneously on several teeth and save time. If applied for a second or third time and the color of the removed gel is the same as the initial one, it indicates that there is no presence of caries infected tissue.

WHERE
THERE IS **BRIX,**



THERE IS
NO CARIES,
AND NO PAIN.



ENZYMATIC CARIES REMOVAL

GOOD FOR THE PATIENT AND THE DENTIST

INNOVATIVE PRODUCT BRIX3000® is an innovative dental product that will revolutionize caries management. The removal of caries without any pain is the basis of a non-traumatic treatment, something that dentists strive for in the care of their patients.

ENZYMATIC ACTIVITY The enzymatic activity of the bio-encapsulated papain (3.000 U/mg*) in BRIX3000® needs only about 2 minutes to dissolve any infected dental tissue that is affected by caries. Dental explorer and mirror are used to apply and remove the BRIX3000® gel and the affected dentin. In most of the cases, drilling may not be needed at all. Note that BRIX3000® does not affect the dentin that has remineralization capacity.

REACTS ONLY WITH AFFECTED DENTIN BRIX3000® reacts only with infected dentin that is affected by caries. No other procedure or material saves as much healthy dental tissue as BRIX3000® does. This guarantees you the best and most gentle treatment and healthy teeth for a long time, with the smallest amount of restorative material needed.

AVOID DRILLING AND ANAESTHESIA By eliminating the need for aggressive treatment involving drilling and anaesthesia, BRIX3000® not only takes the fear of many patients, it also improves the complete dental treatment process. Removal of tooth decay with BRIX3000® is much quicker and safer than current approaches. Multiple teeth of a patient can be treated simultaneously, which reduces the length of the visit and the anxiety of patients.

NATURAL AND 100% NON-TOXIC BRIX3000® is a patented formula utilising papain enzyme, which has been clinically tested in a broad range of different patients. It is 100% non-toxic and has no side effects. It has proven to be safe for contact with skin, eyes and other body parts and can be used in patients of all ages, even those with systemic diseases, disability or pregnant women. BRIX3000® is good for patients' health and for the planet.

NO MORE PAIN AND FEAR Working with BRIX3000® is in accordance with the ART (Atraumatic Restorative Treatment) technique, the WHO (World Health Organization) and the IDF (World Dental Federation) recommendations. No pain and fear during dental treatment promotes higher compliance and better health.

DEDICATED TO THE BEST DENTAL CARE We are dedicated to bringing the best in dental care through scientific innovation. For more information about BRIX3000® ask your dentist or our local representative.



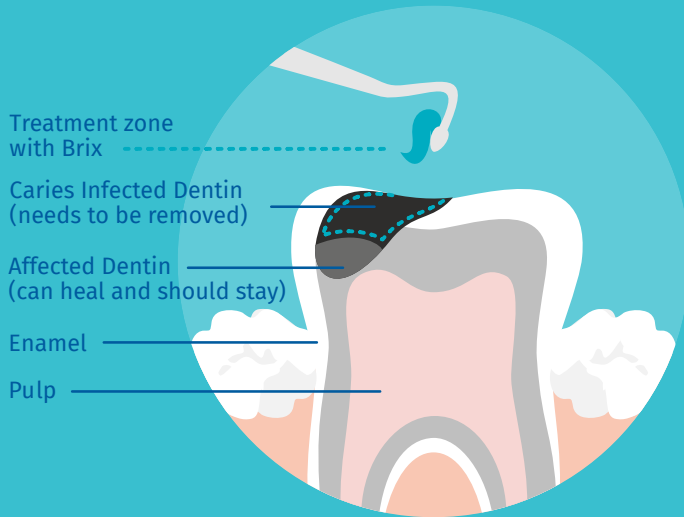
***AS A MODERN DENTIST,
I SIMPLY LOVE BRIX.
AND MY PATIENTS
LOVE IT TOO.***



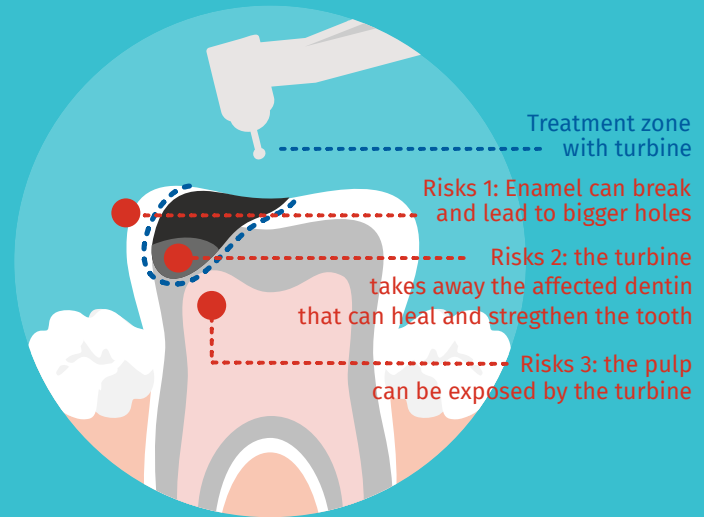
BRIX3000®

vs.

Conventional turbine

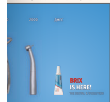
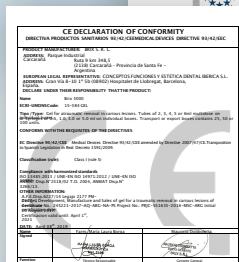


More comfort, less risks.



Less comfort, more risks.

MORE AND MORE RESEARCH SUPPORTS THE ATRAUMATIC ENZYME-BASED AND BIO-MECHANICAL CARIES-REMOVAL



A NEW METHOD TO REMOVE INFECTED CARIOUS DENTINE WITH BRIX3000®



PRELIMINARY RESEARCH — JANET KIROLOVA, ALEKSANDER NAYDENOV, VESELINA LIONDEVA, SNEZANKA TOPALOVA-PIRINSKA

DEPARTMENT OF CONSERVATIVE DENTISTRY, FACULTY OF DENTAL MEDICINE, SOFIA MEDICAL UNIVERSITY, SOFIA, BULGARIA

The atraumatic removal of the affected dentine using chemical-mechanical preparation is known within the products Carisolv and BRIX3000®. In Bulgaria this method it is still unknown and the researches globally are just a few. BRIX3000® is an enzymatic gel, which major component is the enzyme papain. Papain is an endoproteine, similar to the human pepsine, which has bactericide, bacteriostatic and antiseptic properties. The enzyme is bio-encapsulated by the technology E.B.E. (Encapsulating Buffer Emulsifier), which keeps and lends stability and increases the enzymatic activity of the final product. Papain is an enzyme which lysate the collagen filaments but it acts only on the affected by a carious process dentine tissue. The healthy tissue is conserved because of the absence of plasmatic antiproteas.



The initial results of appliance the papain gel are encouraging. We have been observing 10 cases where the carious affected dentine is being removed by the papain gel.

Clinical case - Caries profunda: A 17-year old patient with an advanced caries destruction to the approximal and mesial surface of the tooth 46 was diagnosed with caries profunda. The enamel tissue above the lesion was removed with rotating instruments. The dentine tissue was treated with papain gel for approximately 2 minutes and then it was removed only with manual instruments. The dentine wound was treated with distilled water and was ozoned for 24 seconds.



Clinical case - Caries profunda: A 39-year old patient was diagnosed with hyperaemia pulpae of the tooth 26. The carious dentine was bright-yellowed coloured and with soft consistency. The affected dentine was treated for 2 minutes with papain gel and carefully excavated only with manual instruments. The dentine wound was irrigated with distilled water to remove the dentine scraps (left after preparation the cavity with rotating instrument) and ozoned for 24 seconds. Then the cavity was filled temporary with Biodentine.



Patients find this way to remove caries less painful and the like the atraumatic manipulation. The observation of more clinical cases will give us information about the effect of applying the enzyme-technology for caries removal with BRIX3000®. The initial results are encouraging, especially for patients who are afraid of dental treatment.



DR. JANET KIRILOVA PHD

**Associate Professor
Faculty of Dental Medicine
Medical University Sofia
Bulgaria**

When treating dental caries, the damaged tissue is traditionally removed with selective rotation tools. This creates tension and stress for patients, especially for children, adolescents, and some elderly people. Also important is that the removal of the dentin that is infected by caries sometimes can not be controlled perfectly because the turbine can take away too much or too less in some cases. For example the affected dentin that can be remineralized, the healthy dentin, and in some cases the tooth pulp, are unnecessarily removed.

The mechanism of the papain enzyme in BRIX3000® is to dissolve the covalent fibres covalent bonds (i.e., the hydrogen bond between the peptides by electrostatic hydrolysis) without dissolving the transverse covalent bonds. When reaching the healthy dentin, the gel is neutralized in two ways – physiological by the action of α 1-antitrypsin anti-protease and micro-physiological by unbridled collagen fibres, which means that the enzyme has a self-limiting effect. So by reaching the healthy dentine its mechanism stops.

Another important feature of BRIX3000® is its antibacterial activity that was also proven in many studies. Regarding the biological susceptibility of BRIX3000® in vitro studies on fibroblast cells, papain is found to be biologically tolerable and completely nontoxic to the human body.



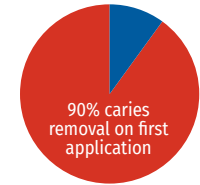
**BRIS IS FOR ALL TYPES OF
CARIES AND ALL PATIENTS.
IDEAL FOR PREGNANT, KIDS,
AND SPECIAL CARE PATIENTS.**

CARIES REMOVAL	BRIX	CONVENTIONAL
Mechanism	enzymatic	rotary
Anesthesia use	no	yes
Rotary instrument use	no	yes
Operatory technique	atraumatic	traumatic
Procedure	minimally invasive	invasive
Empathy between professional and patient	higher	lower
Mala praxis risk	minimal	high
Fear to the dentist	unlikely	likely
Operatory technique	simple	complex
Pulp exposure risk	Lower risk	Higher risk
Post trauma cavity for adhesive material	Rough and retentive	Smooth and expulsive
Micro-cracks and micro-fractures	No	Maybe yes
Patient's comfort	higher	lower
Patient's reaction to pain	lower	higher

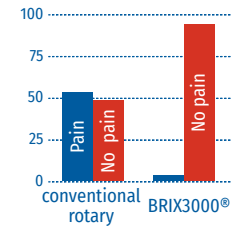
All data here is based on the research of Dr. Laura Bsereni and Dr. Fernando Varea Torresi on a group of 200 patients

Caries removal on first BRIX3000 application

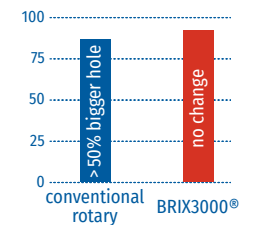
10% need more than one application



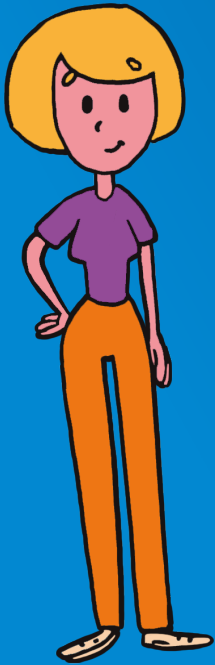
Pain perception conventional vs. BRIX



Pre- and post-operative size of caries hole



**GOING TO THE DENTIST GOT FUN NOW,
BECAUSE BRIX IS EASY & PAINLESS
LIKE BRUSHING TEETH.**





DR. EVELINA BELYOVSKA
CEO of EO DENT
Children's Dental Clinic
Sofia, Bulgaria

A handwritten signature in blue ink, appearing to be 'E. Belyovska', written over the bottom part of the text block.

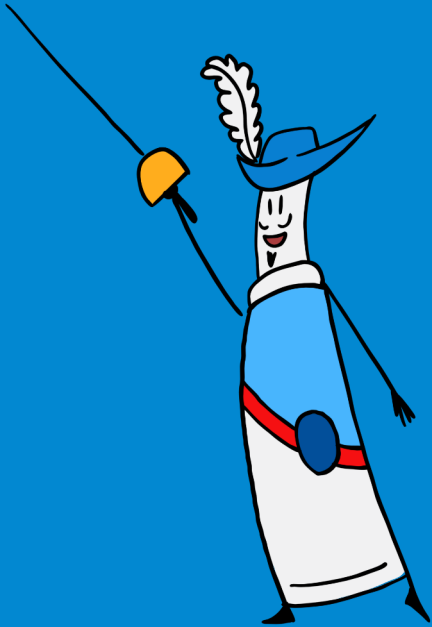
Doctors and patients are working much more than before on the prevention side and new a-traumatic, minimal-invasive, and patient-centric methods are applied successfully. Especially here on the balkans, where oral health is a fast growing field, and yet a lot of work has still to be done.

We, at the EO Dent clinics, as one of the leaders in this sector, embrace innovations and work on strategies to integrate them in our everyday processes. As a dental specialist with a focus on kids and teenagers, I personally value and advocate for new painless and easy-to-use technologies the most.

That's why BRIX3000® is a great product for the innovative dentistry. Its highly concentrated papain enzyme eliminates and dissolves the caries infected tooth material painlessly and allows us to avoid using drills and anaesthesia in many cases. This preserves the most of the healthy tooth and guarantees a maximum comfort and a minimum stress for both, the patient and the dentist as well.

BRIX3000® will change the way dentists are working today and will lead to a much better treatment experience between us and our patients.

www.sir-brix.com



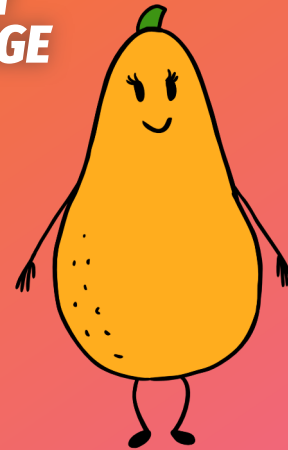
OUR FOUR HEROES THAT WILL SPREAD THE MESSAGE

SALUT, DEAR PARENTS AND KIDS!

I am Sir Brix and together with my friends Mrs. Papaya, the Tooth Fairy, and Dr. No Pain, we fight to make all caries treatments today painless and to improve the cavities therapy all over the world. One for all and all for one!

HELLO TO ALL YOU NICE PEOPLE OUT THERE!

I am Mrs. Papaya and my seeds are another wonder of great nature. They are known for centuries to have dozens of positive effects on human health. Now a team of great scientists succeeded to concentrate my papain enzyme in a new gel, that dissolves caries completely and is absolutely painless.





**AND WILL BRING
BRIX3000® TO SOCIETY**

MY DEAR LITTLE AND BIG ANGELS!

You believe in me and I believe in healthy teeth and the big magic a happy smile can do! That's why I also joined the global mission for a new caries treatment for kids, for pregnant women, for special care patients, and people of all ages, basically for all teeth on the planet!

**DEAR KIDS, DEAR PARENTS,
DEAR PATIENTS, AND DEAR COLLEAGUES!**

It is all true. Every once in a while, a new revolutionary invention improves our lives, the way we are working and thinking completely. Painless treatments, more natural approaches, prevention, and preservation is the new COOL in all medical disciplines.



GOING TO THE DENTIST GOT FUN NOW, BECAUSE BRIX IS EASY & PAINLESS LIKE BRUSHING TEETH.

DOES BRIX3000® REPLACE THE DRILL?

In many cases it does. Sometimes, in cases of retentive cavities, the drill is used as a complement to turn them expulsive to facilitate their treatment..

WHAT HAPPENS IF A PATIENT INGESTS BRIX3000®?

Nothing, since it is made of innocuous, authorized active ingredients and excipients in compliance with competent sanitary authorities.

WHAT HAPPENS WHEN YOUR SKIN COMES INTO CONTACT WITH BRIX3000®?

BRIX3000® does not cause dermal irritation since it has been dermatologically tested.

IS IT NECESSARY TO USE ANY SPECIAL OBDURATING MATERIAL TO FILL THE CAVITY?

No, the usage of BRIX3000® does not have any influence on obdurating materials and tooth fillings.

HOW MANY CARIES DOES A BRIX3000® (3ml) TUBE YIELD?

With its 90 applications (30 per each ml) yields at least 45 caries depending on the cavity size.

IS IT NECESSARY TO KEEP BRIX3000® REFRIGERATED?

No, it can be store at room temperature. That is one of its main characteristics.

WHAT HAPPENS IF BRIX3000® IS EXPOSED TO HIGH TEMPERATURE OR DIRECT SUNLIGHT?

Store between 4 and 36°C. Do not expose the product to direct sunlight and keep it in its container.

DOES BRIX BRIX3000® REACT WITH HEALTHY DENTIN?

No, it reacts only with the caries affected dentin and since its composition does not produce chromogenic residue.

CAN I USE BRIX3000® TO DIAGNOSE A POSSIBLE CAVITY?

Yes, due to the fact that it only reacts with the infected dentin without damaging healthy dentin.

WHAT PREVIOUS PREPARATION DOES A PATIENT REQUIRE FOR THE APPLICATION OF BRIX3000®?

If necessary, enlarge the diameter of the cavity with manual or rotary instruments if available to get an expulsive cavity. In case of large lesions, apply directly.

IS IT NECESSARY TO APPLY ANAESTHESIA BEFORE THE APPLICATION OF BRIX3000®?

Not necessarily because of its atraumatic characteristics. The dentist decides in case of complicated cases.

SHOULD I WASH OUT BRIX3000® GEL BETWEEN TWO APPLICATIONS AND DO I NEED ISOLATION?

Do not wash out BRIX3000® because the water will weaken strongly the efficacy of the gel and use just relative isolation.

HOW MUCH GEL SHOULD I APPLY TO A CAVITY?

Depending on the cavity size, as a general rule, the equivalent to “half a grain of rice”.

CAN IT BE USED FOR ALL TYPES OF CARIES AND DOES IT AFFECT THE PULP IN ANY KIND?

Yes, it can be used for acute and chronic dentin caries and BRIX3000® does not affect the pulp at all.

CAN BRIX3000® BE APPLIED TO ANY TYPE OF PATIENTS?

Yes, including pregnant women, children, patients with systemic diseases and special care patients.

DOES OR COULD BRIX3000® HAVE ANY KIND OF CONTRAINDICATIONS OR ADVERSE REACTION?

It does not have adverse reactions and it is contraindicated in teeth with spontaneous pain and fistulas.

CAN I APPLY BRIX3000® TO SEVERAL CARIES AT THE SAME TIME AND LET IT LAST LONGER?

Yes, it is one of its main characteristics. You can even close a teeth with BRIX3000® for some days if necessary.

DOES BRIX3000® CHANGE THE NATURAL COLOUR OF THE DENTIN AND HOW DO I REMOVE THE GEL?

No, since its composition does not produce chromogenic residue. Use a Black spoon with pendulum movements.

IS BRIX3000 HARMLESS TO SOFT TISSUE AND HEALTHY DENTIN?

Yes, due to the presence of alpha-1 antitrypsin anti-protease in the tissue, which deactivates the enzymatic action.

YOU WANT TO BECOME A PART OF THE DENTAL R/EVOLUTION?

CONTACT US.

